

**Faculty and EPA Non-Faculty
EMPLOYMENT REVIEW**

Prepared By

**The Equal Opportunity Office
The University of North Carolina
At Chapel Hill**

Fall 2008

**EPA Faculty and Non-Faculty
EMPLOYMENT REVIEW
Fall 2008**

Summary:

The report for the 2007-2008 period shows that there was a net increase of 148 in the total number of faculty in the University. There was an increase in the total tenured (36) and an increase of tenure track (20) Faculty. There was an increase in the total fixed term (92) faculty. There was an increase of (100) in the total number of EPA Non-Faculty.

Faculty composition: Total 3148

Minority composition:

Asians comprise 10% of the faculty with 306 total, an increase from 274. Tenured faculty increased from 87 to 92, Tenure Track increased from 65 to 70, and fixed term increased from 122 to 144.

African Americans comprise 5% of the faculty with 155, an increase from 136. Tenured faculty stayed the same at 52, Tenure Track increased from 32 to 38, and fixed term increased from 52 to 65.

Hispanics comprise 3% of the faculty with 102 total, no change from last year. Tenured faculty decreased from 26 to 22, Tenure Track increased from 22 to 26, and fixed term stayed the same at 54.

American Indians comprise less than 1% of the faculty with 9 total, no change from last two years. The Tenured faculty increased from 3 to 4, Tenure Track decreased from 4 to 3, and fixed term stayed the same at 2.

All Faculty	2008	2007
Asians	306 10%	274 9%
African American	155 5%	136 5%
Hispanic	102 3%	102 3%
American Indian	9 <1%	9 <1%
White	2573 82%	2479 83%
Total	3148	3000

Tenured/ Tenure Track	2008	2007
Asians	162 9%	152 8%
African American	90 5%	84 5%
Hispanic	48 3%	48 3%
American Indian	7 <1%	7 <1%
White	1555 83%	1516 84%
Total	1863 *	1807

*1 Other Female

Fixed Term	2008	2007
Asians	144 11%	122 10%
African American	65 5%	52 4%
Hispanic	54 4%	54 5%
American Indian	2 <1%	2 <1%
White	1018 79%	963 81%
Total	1285*	1193

*2 Other Male

Female composition:

Female comprise 42% of the faculty with 1,331 total, an increase from 1,238. Tenured faculty increased from 399 to 411, Tenure Track increased from 179 to 196, and fixed term increased from 660 to 724.

Female Composition:	2008		2007	
	Male	Female	Male	Female
Tenured	1008 32%	411 13%	984 33%	399 13%
Tenure Track	248 8%	196 6%	245 8%	179 6%
Fixed Term	561 18%	724 23%	533 18%	660 22%
Total	1817 58%	1331 42%	1762 59%	1238 41%

Non Faculty composition:

There are a total of 1,710 non faculty with 713 males (42%) and 997 females (58%).

Minority composition:

African Americans comprise 158 (9%) which is an increase from 137.

Asians comprise 134 (8%) which is an increase from 132.

Hispanics comprise 34 (2%) which is an increase from 32.

American Indians comprise 8 (<1%) which is the same as last year.

NON FACULTY	2008	2007
Asians	134 8%	132 8%
African American	158 9%	137 9%
Hispanic	34 2%	32 2%
American Indian	8 1%	6 <1%
White	1376 80%	1303 81%
Total	1710	1610

MALE/FEMALE	2008	2007
Male	713 42%	668 41%
Female	997 58%	942 59%
Total	1710	1610

Hiring Activity: (Includes Recruitments and Special Searches)

Faculty:

There were 164 Tenured/Tenured Track faculty hired which included 65 women and 37 minority, of these there were 13 African American, 16 Asian, and seven (7) Hispanic.

TENURED/ TENURE TRACK	2008	2007
Asians	16 10%	23 22%
African American	13 8%	11 10%
Hispanic	7 4%	6 6%
American Indian	0 0%	0 0%
White	127 77%	67 63%
Total	164*	107

MALE/FEMALE	2008	2007
Male	99 60%	69 64%
Female	65 40%	38 36%
Total	164	107

*1 Other Minority

There were 248 Fixed Term faculty hired which included 150 women and 65 minority, of these there were 15 African American, 40 Asian, 9 Hispanic and 1 American Indian hired.

FIXED TERM	2008	2007
Asians	40 16%	22 11%
African American	15 6%	13 6%
Hispanic	9 4%	13 6%
American Indian	1 <1%	1 <1%
White	183 74%	160 77%
Total	248	209

MALE/FEMALE	2008	2007
Male	98 39%	76 36%
Female	150 61%	133 64%
Total	248	209

Non-Faculty:

There were 395 Non-Faculty employees hired which included 247 women and 93 minority, of these there were 50 African American, 33 Asian, 9 Hispanic and 1 American Indian hired.

NON FACULTY	2008	2007
Asians	33 8%	29 9%
African American	50 13%	36 11%
Hispanic	9 2%	5 1%
American Indian	1 <1%	2 1%
White	302 76%	269 79%
Total	395	341

MALE/FEMALE	2008	2007
Male	148 37%	130 38%
Female	247 63%	211 62%
Total	395	341

End of Employment Activity:

There were a total of 366 EPA employees who left the University which included 162 males, 204 females and 70 minorities.

Faculty:

There were a total of 175 EPA Faculty employees who left the University which included 103 males, 72 female and 35 minorities.

49 Tenured faculty left the University, 36 males, 13 females and 6 minorities.

19 Tenure Track faculty left the University, 12 males, 7 females and 7 minorities.

107 Fixed Term faculty left the University, 55 males, 52 females and 22 minorities.

FACULTY	2008	2007
Asians	21 12%	21 12%
African American	7 4%	16 9%
Hispanic	7 4%	7 4%
American Indian	0 0%	0 0%
White	140 80%	138 76%
Total	175	182

MALE/FEMALE	2008	2007
Male	103 59%	100 55%
Female	72 41%	82 45%
Total	175	182

Non-Faculty:

191 Non-Faculty employees left the University which included 59 males, 132 females and 35 minorities.

NON FACULTY	2008	2007
Asians	15 8%	19 10%
African American	16 8%	23 12%
Hispanic	4 2%	4 2%
American Indian	0 0%	1 <1%
White	156 82%	139 75%
Total	191	186

MALE/FEMALE	2008	2007
Male	59 31%	76 41%
Female	132 69%	110 59%
Total	191	186

Faculty Promotions

There were 122 promotions. 89 Tenured which included 31 women and 11 minority, of these there were three (3) African Americans and eight (8) Asians. One (1) Tenure Track White Female, 32 Fixed Term which included 21 Women and One (1) Hispanic Female.

FACULTY AND NON FACULTY EMPLOYMENT REVIEW
September 1, 2007- August 31, 2008

Chart 1	
Faculty by Employment Category 2004-2008 -----	11
Chart 2	
All EPA by Employment by Category, 2004-2008 -----	12
Chart 3	
Faculty by Race - September 30, 2008 -----	13
Chart 4	
Faculty by Race and Gender 2004-2008 -----	14
Chart 5	
Tenured/Tenure Track Faculty by Race and Gender 2004-2008 -----	15
Chart 6	
Fixed Term Faculty by Race and Gender 2004-2008-----	16
Chart 7	
Faculty by Gender 2004-2008 -----	17
Chart 8	
Non Faculty by Race - September 30, 2008 -----	18
Chart 9	
Non Faculty by Race and Gender 2004-2008 -----	19
Chart 10	
Non Faculty by Gender 2004-2008-----	20
Chart 11	
EPA Employees Hired by Race - September 01, 2007 - August 31, 2008 -----	21
Chart 12	
EPA End of Employment by Race - September 01, 2007 - August 31, 2008 -----	22
Chart 13	
All EPA End of Employment by Gender - September 01, 2007 - August 31, 2008-----	23
Chart 14	
Academic Affairs-Tenured/Tenure Track Faculty Hiring Summary by College/School 2007-2008 ----	24
Chart 15	
Academic Affairs-Tenured/Tenure Track Faculty End of Employment by School 2007-2008 -----	25
Chart 16	
Academic Affairs-Tenured/Tenure Track Faculty Hiring by Rank 2007-2008-----	26
Chart 17	
Academic Affairs-Tenured/Tenure Track Faculty End of Employment by Rank 2007-2008 -----	27

Table of Contents cont.

Chart 18	
Health Affairs-Tenured/Tenure Track Faculty Hiring by College/School 2007-2008 -----	28
Chart 19	
Health Affairs-Tenured/Tenure Track Faculty End of Employment by College/School 2007-2008----	29
Chart 20	
Health Affairs-Tenured/Tenure Track Faculty Hiring by Rank 2007-2008 -----	30
Chart 21	
Health Affairs-Tenured/Tenure Track Faculty End of Employment by Rank 2007-2008-----	31
Chart 22	
Academic Affairs-Fixed Term Faculty Hiring by College School 2007-2008 -----	32
Chart 23	
Academic Affairs-Fixed Term End of Employment by College School 2007-2008 -----	33
Chart 24	
Academic Affairs-Fixed Term Faculty Hiring by Rank 2007-2008 -----	34
Chart 25	
Academic Affairs – Fixed Term Faculty End of Employment by Rank 2007-2008-----	35
Chart 26	
Health Affairs – Fixed Term Faculty Hiring by School/College 2007-2008 -----	36
Chart 27	
Health Affairs – Fixed Term Faculty End of Employment by School/College 2007-2008 -----	37
Chart 28	
Health Affairs – Fixed Term Faculty Hiring by Rank 2007-2008 -----	38
Chart 29	
Health Affairs – Fixed Term End of Employment by Rank 2007-2008-----	39
Chart 30	
Non-Faculty Hiring by School 2007-2008-----	40
Chart 31	
Non-Faculty End of Employment by School 2007-2008-----	41
Chart 32	
Non-Faculty Hiring by EEO Category 2007-2008-----	42
Chart 33	
Non-Faculty End of Employment by EEO Category 2007-2008 -----	43
Chart 34	
Faculty Promoted by Title – 2007-2008 -----	44
Chart 35	
Faculty Promoted by Rank – 2007-2008-----	45

Table of Contents cont.

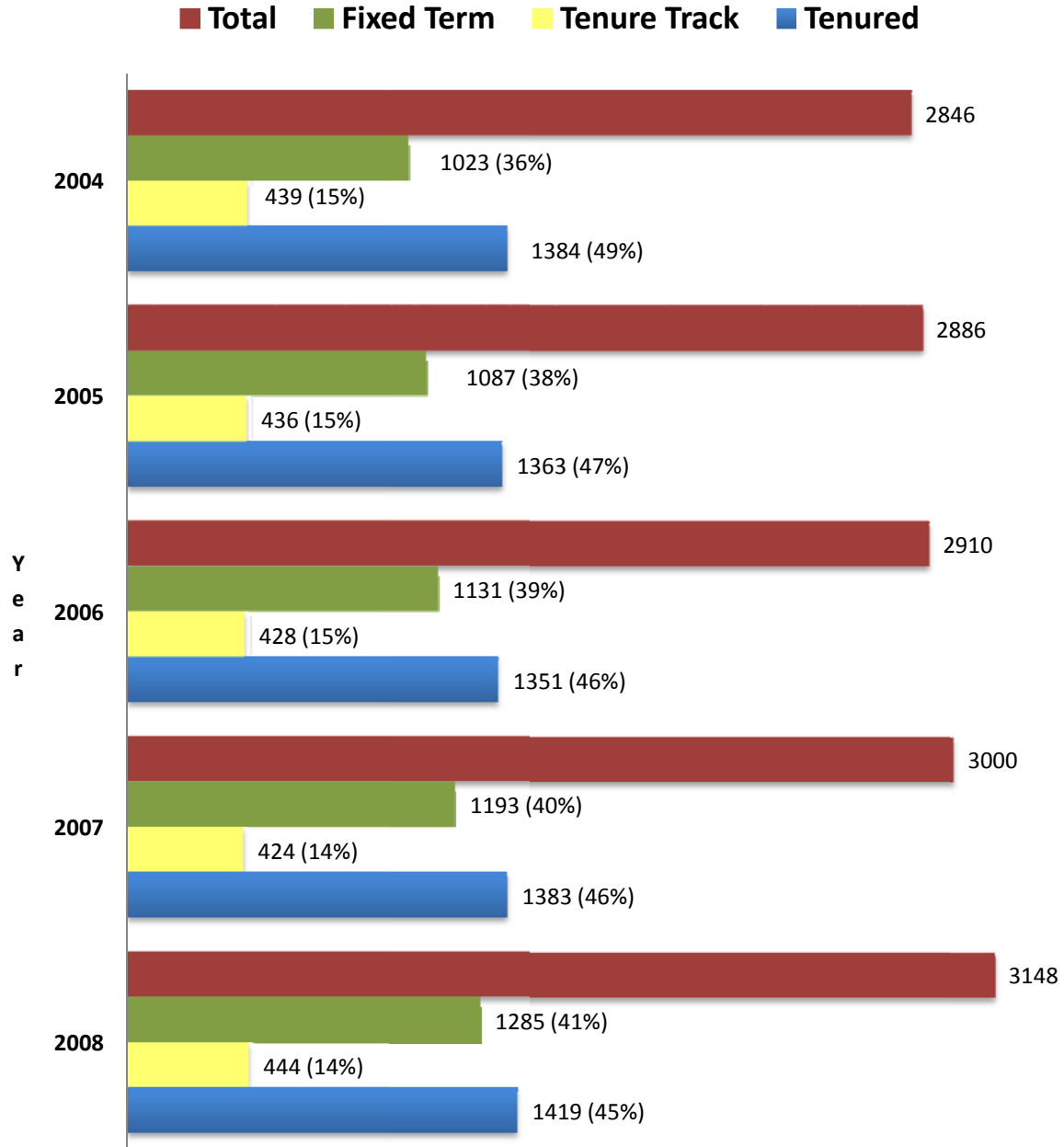
Chart 36 Faculty Promotions by Schools – 2007-2008 -----	46
Chart 37 All Faculty by Rank – September 2008-----	47
Chart 38 Tenure Faculty by Rank - September 2008 -----	48
Chart 39 Tenure Track Faculty by Rank - September 2008 -----	49
Chart 40 Fixed Term Faculty by Rank - September 2008 -----	50
Chart 41 Academic Affairs-Tenured and Tenure Track Faculty by School - September 2008-----	51
Chart 42 Health Affairs-Tenured and Tenure Track Faculty by School - September 2008 -----	52
Chart 43 Academic Affairs-Tenured Faculty by Rank - September 2008 -----	53
Chart 44 Academic Affairs-Tenure Track Faculty by Rank - September 2008-----	54
Chart 45 Academic Affairs-Fixed Term Faculty by Rank - September 2008 -----	55
Chart 46 Health Affairs – Tenured Faculty by Rank - September 2008 -----	56
Chart 47 Health Affairs – Tenure Track Faculty by Rank - September 2008-----	57
Chart 48 Health Affairs – Fixed Term Faculty by Rank - September 2008 -----	58
Chart 49 Non-Faculty Summary by Rank - September 2008 -----	59
Chart 50 Academic Affairs Non-Faculty Summary by School - September 2008 -----	60
Chart 51 Health Affairs Non-Faculty Summary by School - September 2008-----	61
Chart 52 Other – Non Faculty by School - September 2008 -----	62
Chart 53 Non Faculty - SAAO Tier 1 by School - September 2008 -----	63

Table of Contents cont.

Chart 54	
Non Faculty - SAAO Tier 2 by School - September 2008-----	64
Chart 55	
Non Faculty - Instructional by School -September 2008--- -----	65
Chart 56	
Non Faculty – Research by School - September 2008-----	66

Chart 1

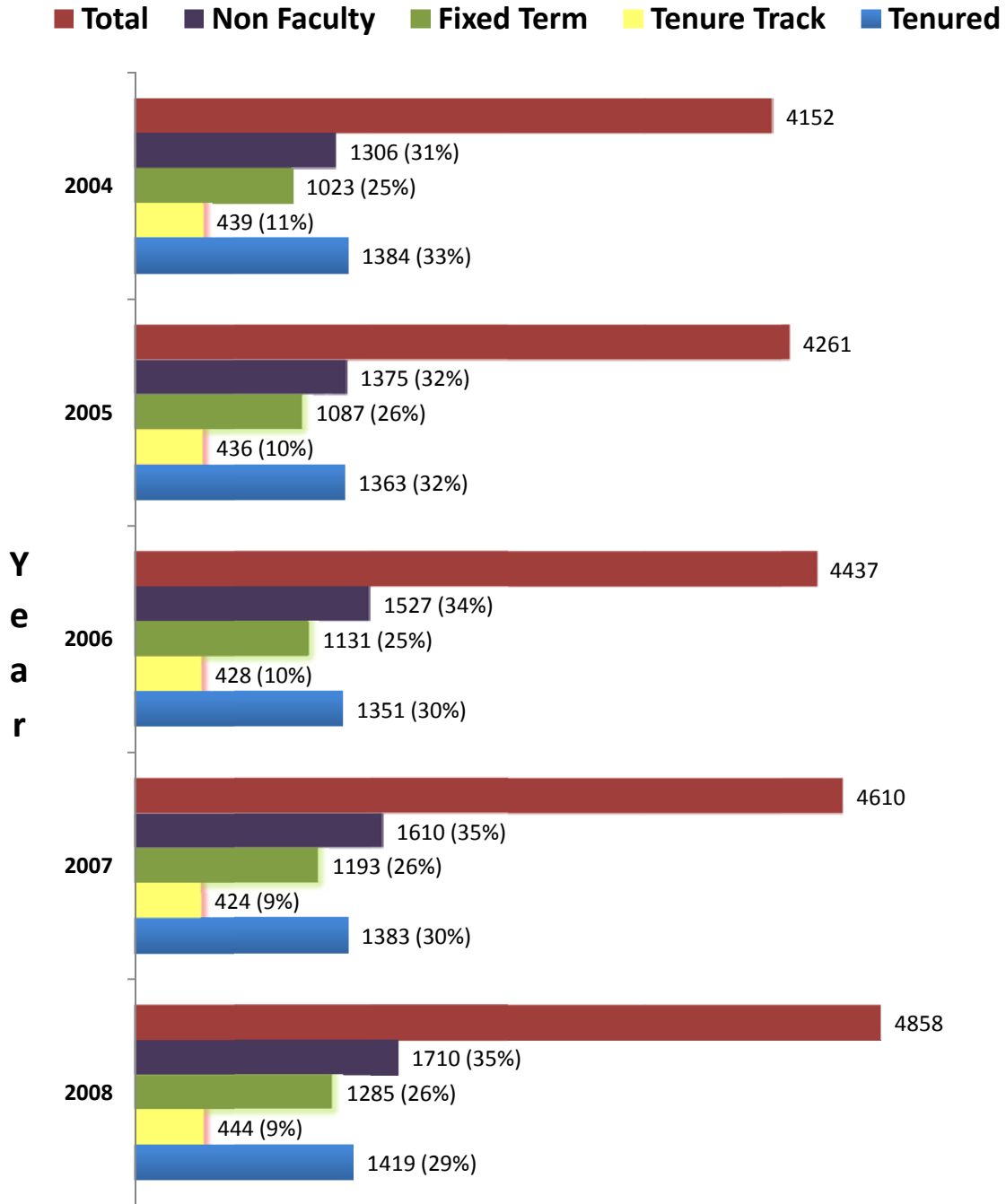
Faculty by Employment Category Fall Semesters 2004 - 2008



Source: Institutional Research PNSP003

Chart 2

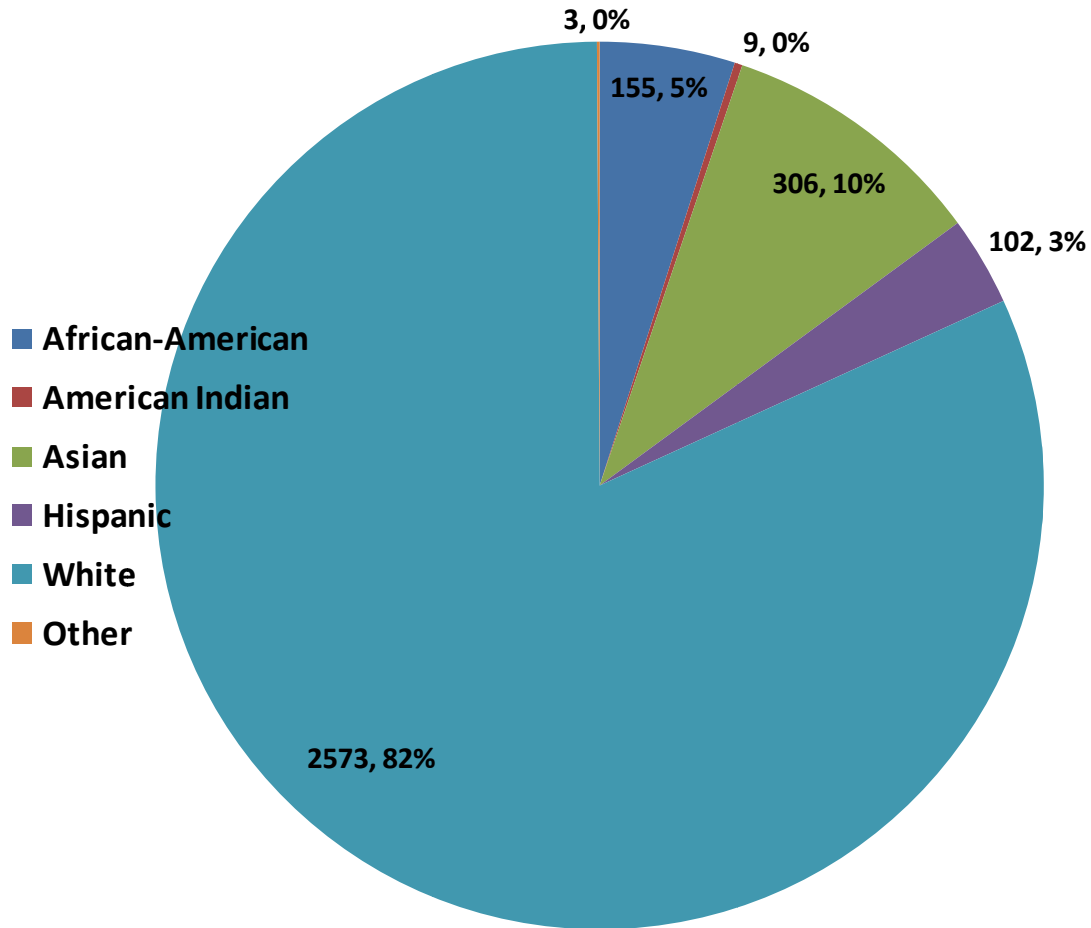
All EPA by Employment Category Fall Semesters 2004 - 2008



Source: Institutional Research PNSP003

Chart 3

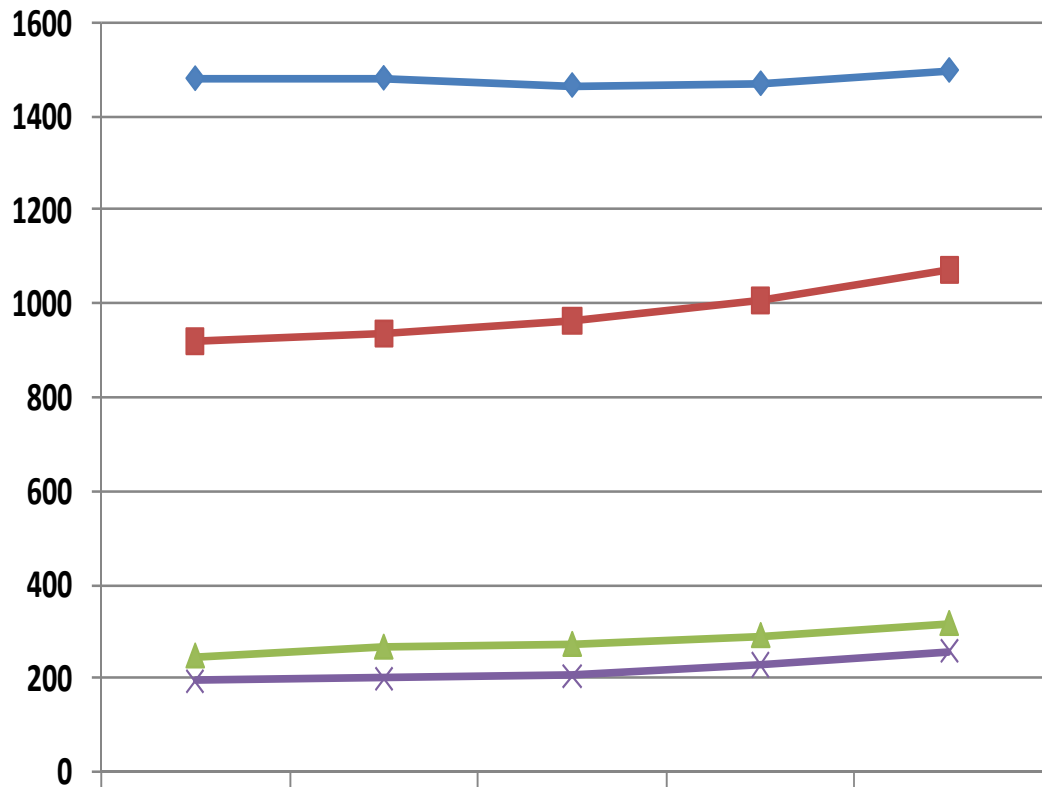
Faculty By Race - September 30, 2008



Total Faculty 3148

Chart 4

Faculty By Race and Gender 2004 - 2008

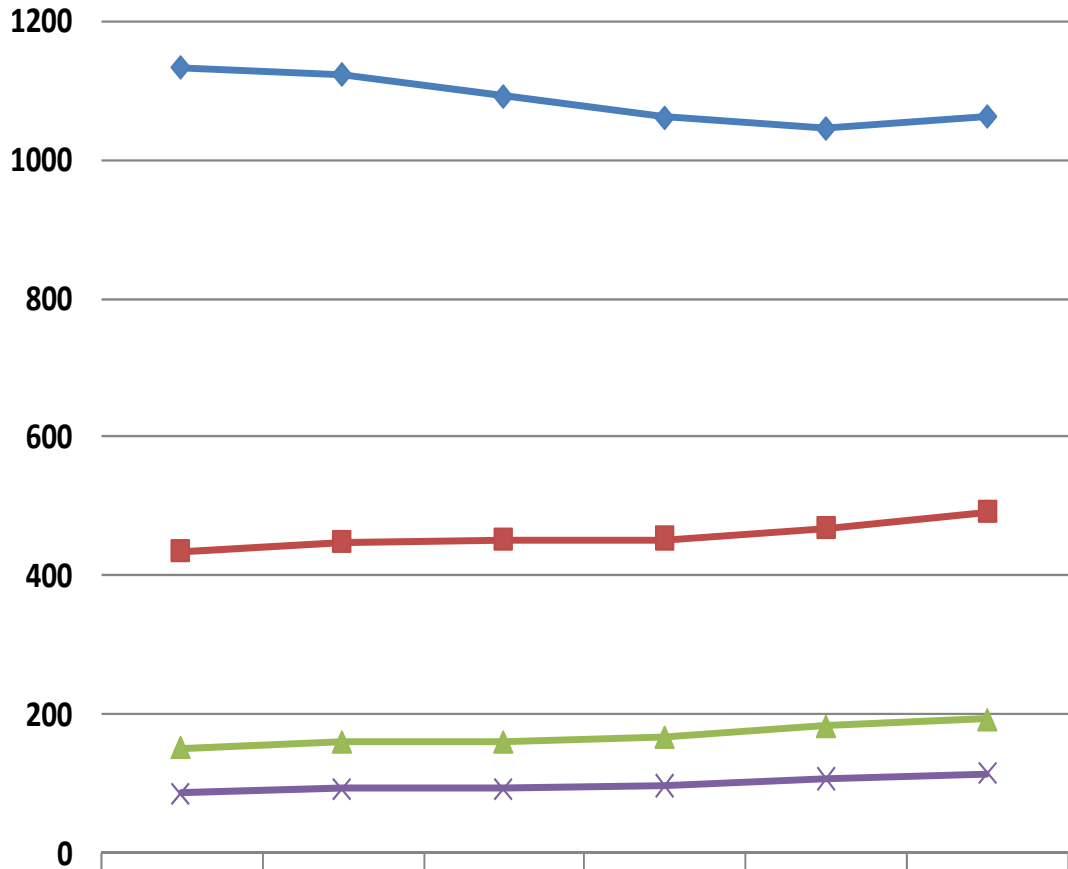


	2004	2005	2006	2007	2008
White Male	1482	1483	1467	1471	1500
White Female	921	937	965	1008	1073
Minority Male	247	266	272	291	317
Minority Female	196	200	205	230	258

Source: Institutional Research PNSP003

Chart 5

Tenured/Tenure Track Faculty by Race and Gender 2004 - 2008

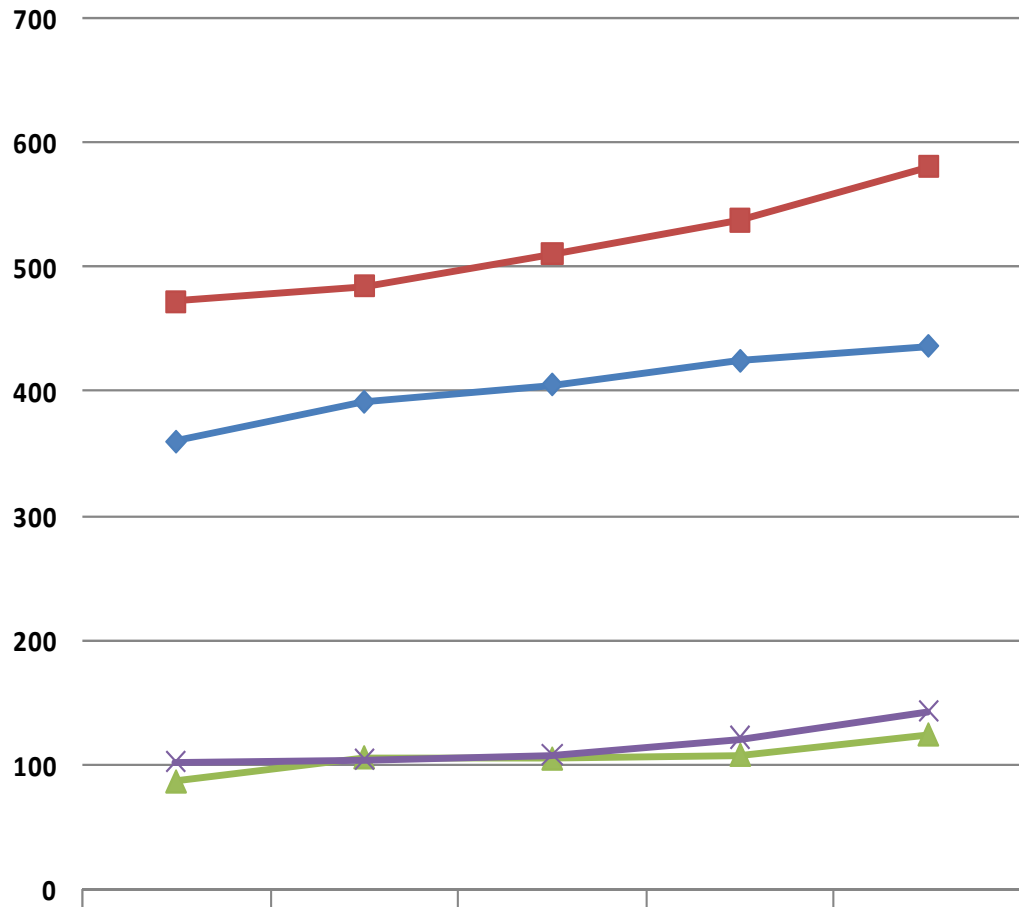


	2003	2004	2005	2006	2007	2008
◆ White Male	1132	1122	1091	1061	1046	1063
■ White Female	436	448	452	454	470	492
▲ Minority Male	152	160	160	167	183	193
× Minority Female	87	93	93	97	108	115

Source: Institutional Research PNSP003

Chart 6

Fixed Term Faculty by Race and Gender 2004 - 2008



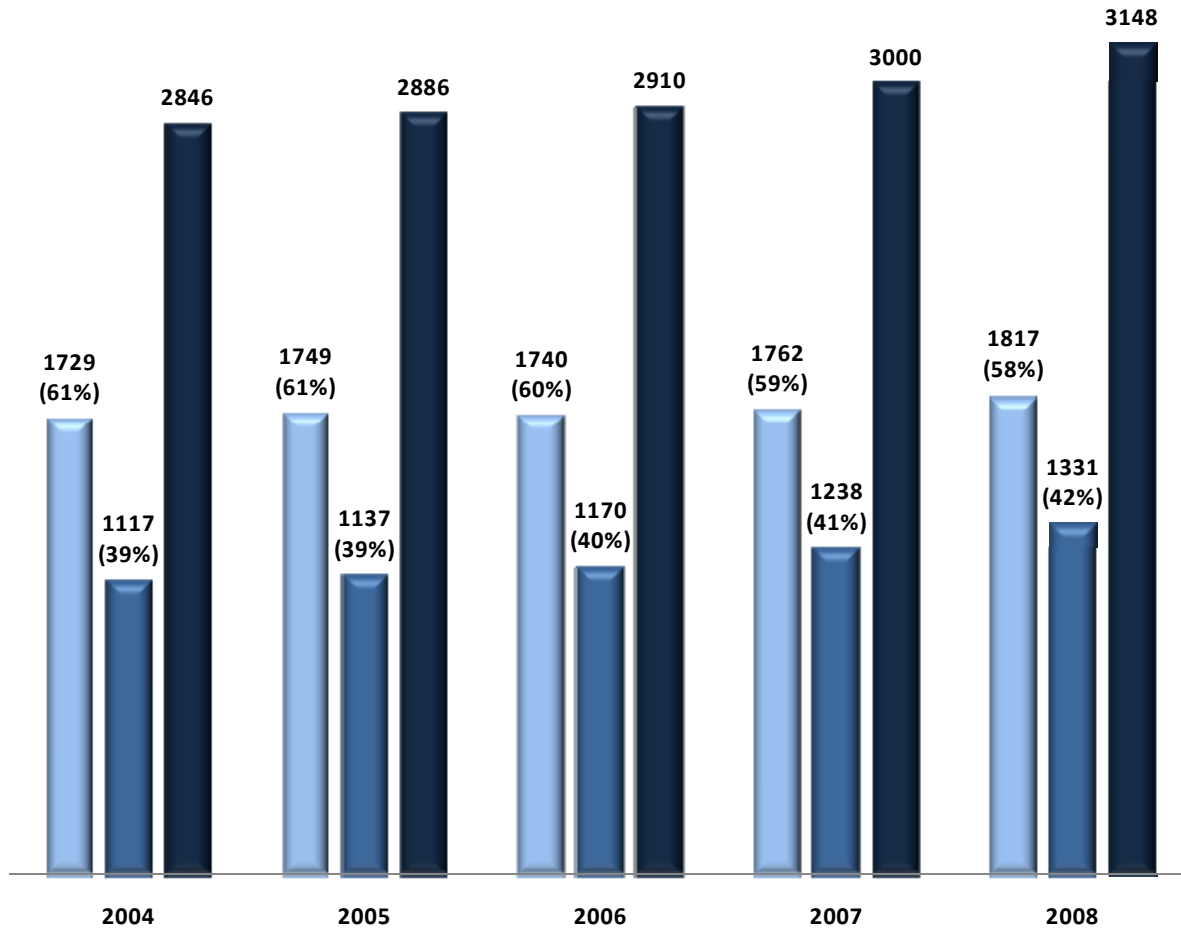
	2004	2005	2006	2007	2008
White Male	360	392	406	425	437
White Female	473	485	511	538	581
Minority Male	87	106	105	108	124
Minority Female	103	104	108	122	143

Source: Institutional Research PNSP003

Chart 7

Faculty by Gender 2004 - 2008

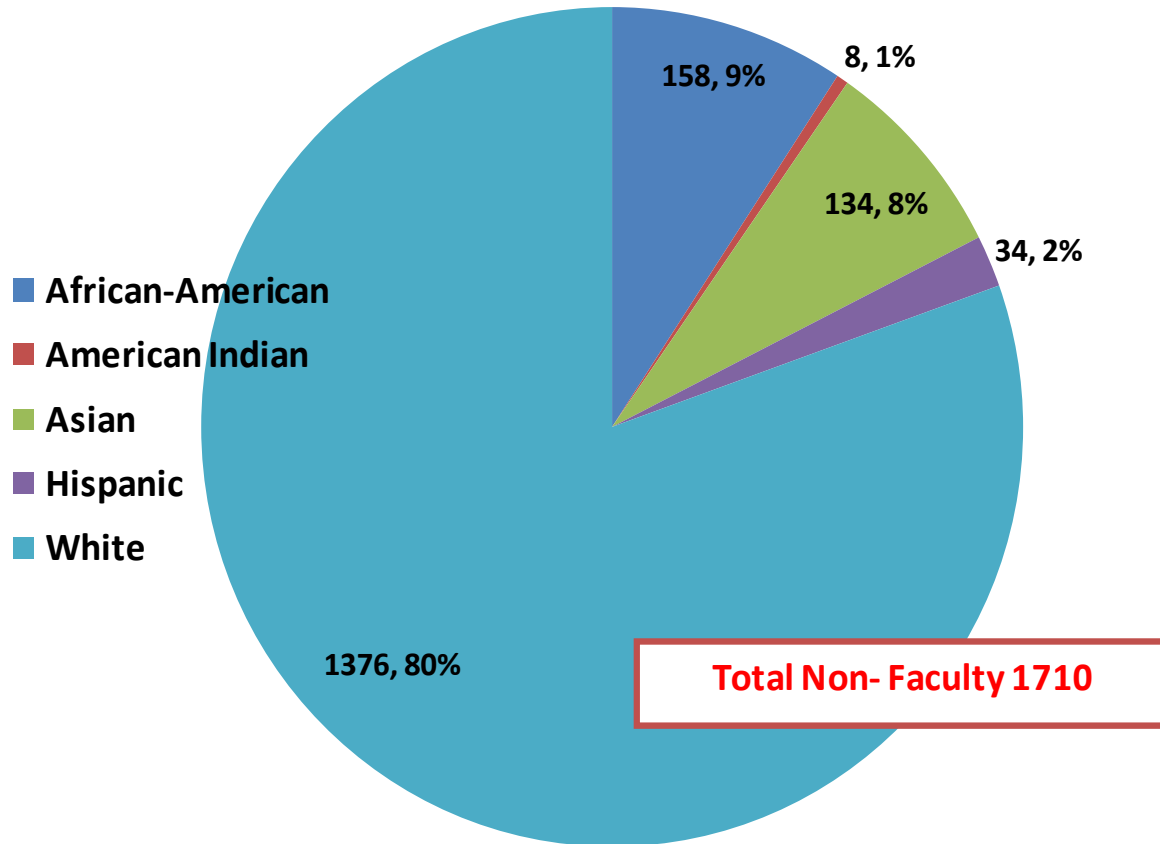
■ Male ■ Female ■ Total Faculty



Source: Institutional Research PNSP003

Chart 8

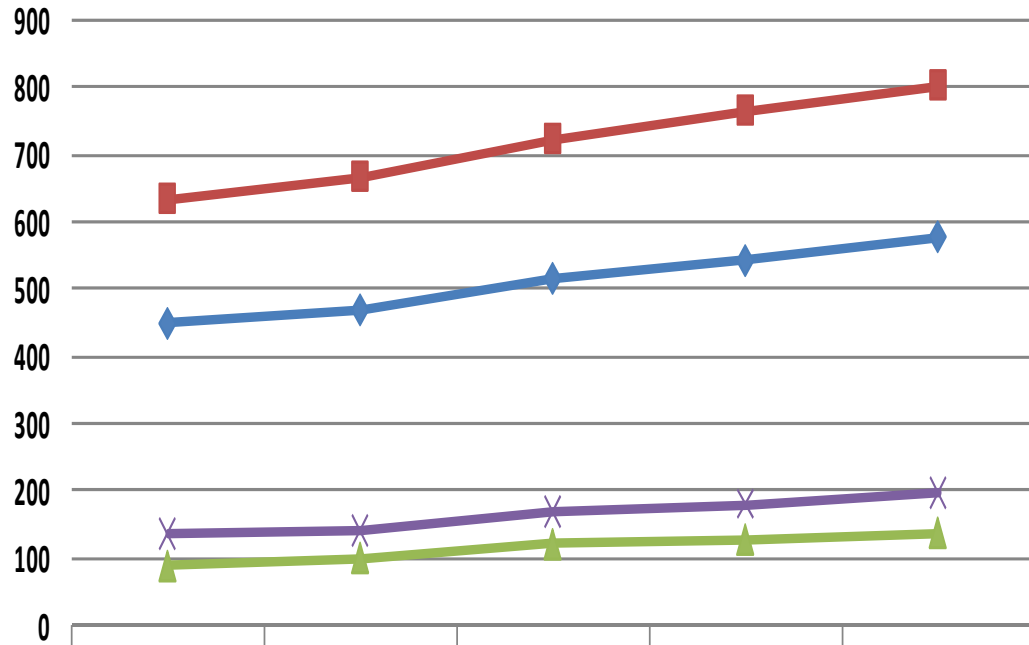
Non Faculty By Race - September 30, 2008



Source: Institutional Research PNSP003

Chart 9

Non Faculty by Race and Gender 2004 -2008



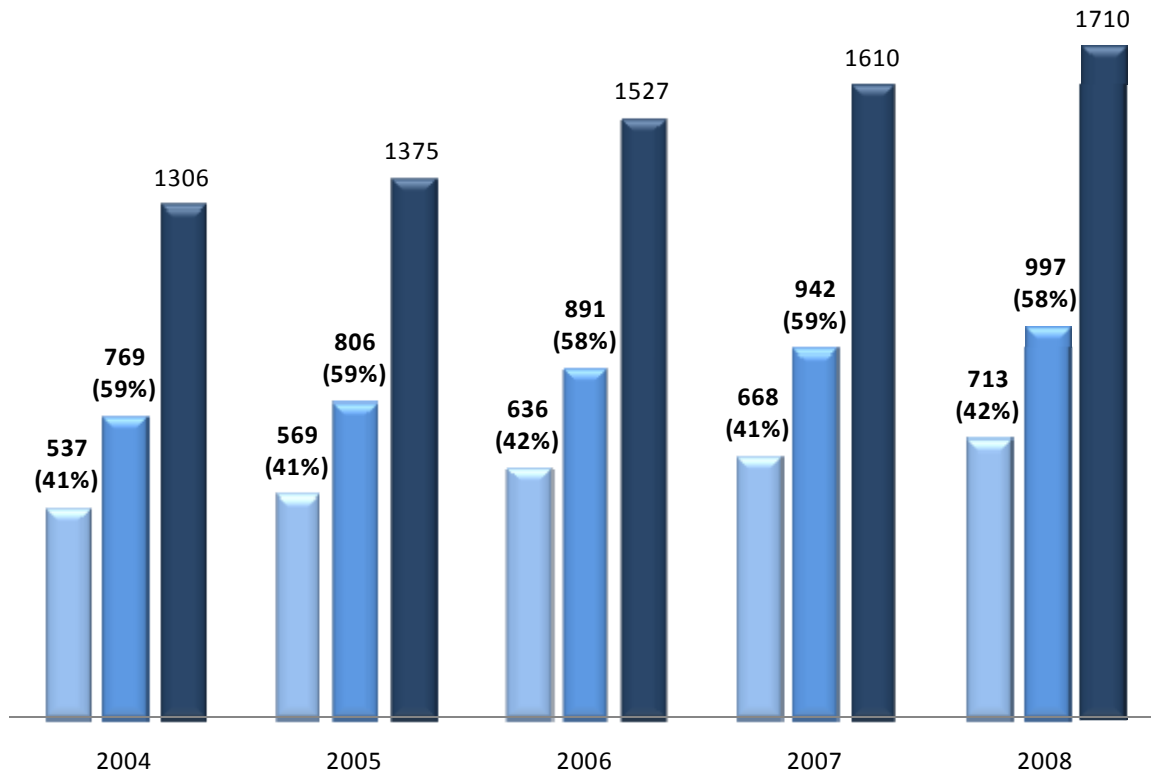
	2004	2005	2006	2007	2008
◆ White Male	448	468	514	540	575
■ White Female	633	665	723	763	801
▲ Minority Male	89	101	121	128	138
× Minority Female	136	140	167	179	196

Source: Institutional Research PNSP003

Chart 10

Non Faculty by Gender 2004 -2008

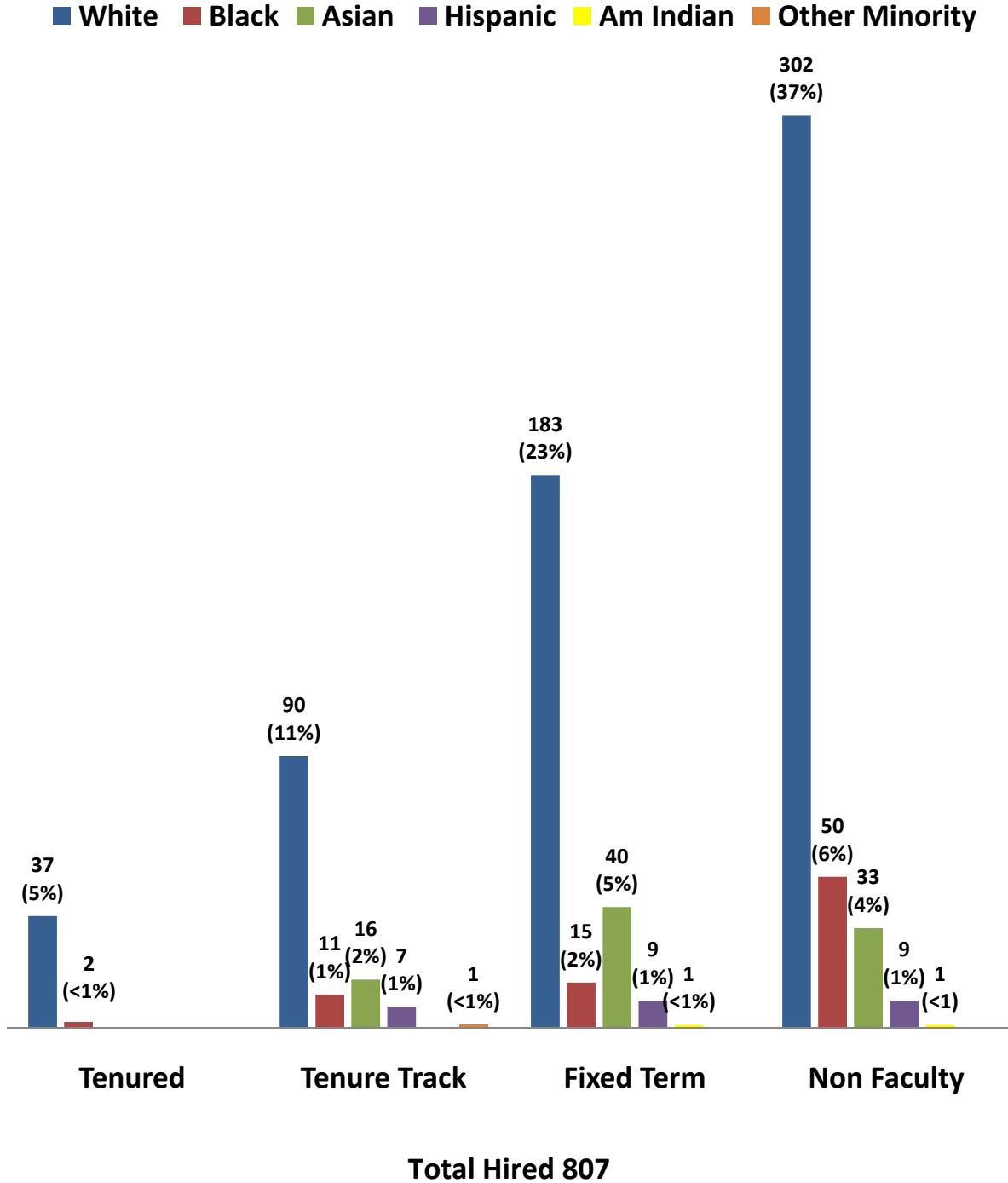
■ Male ■ Female ■ Total Non - Faculty



Source: Institutional Research PNSP003

Chart 11

EPA Employees Hired by Race September 1, 2007 - August 31, 2008

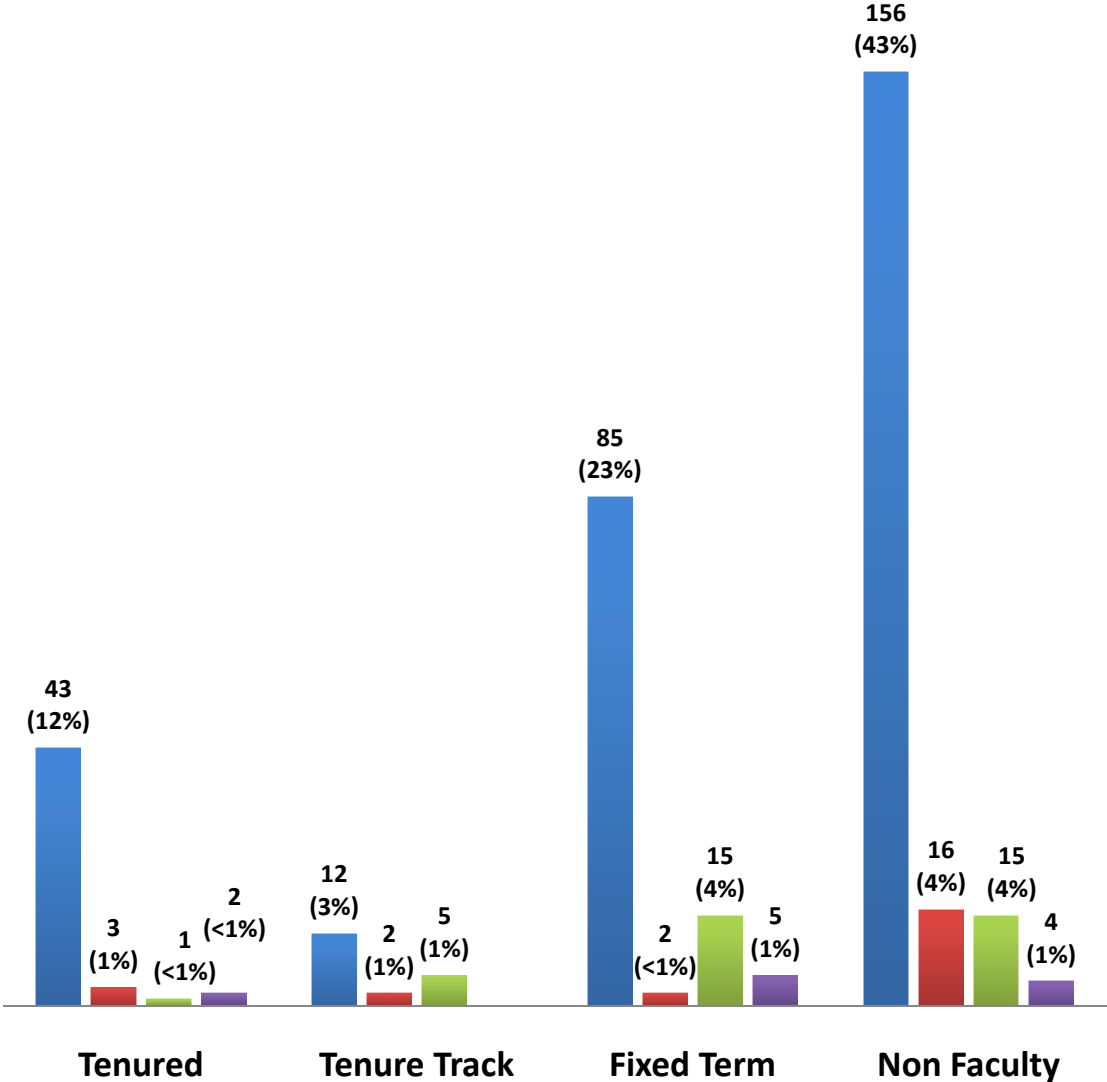


Source: Equal Opportunity Office Database

Chart 12

EPA End of Employment by Race September 1, 2007 - August 31, 2008

White Black Asian Hispanic



Total 366

Source: Equal Opportunity Office Database

Chart 13

All EPA End of Employment by Gender September 1, 2007 - August 31, 2008

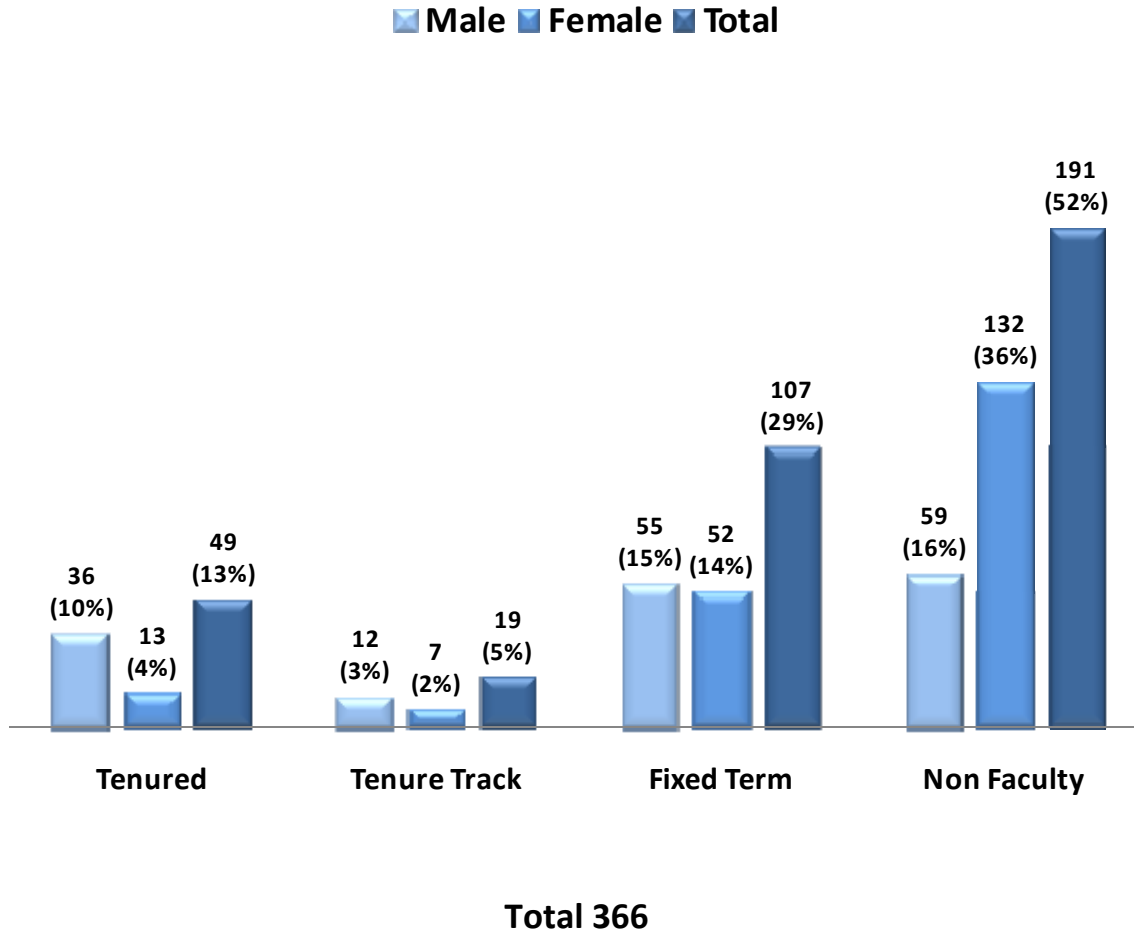


Chart 14

**Tenured/Tenure Track Faculty Hiring Summary by School
September 1, 2007 – August 31, 2008
Academic Affairs**

School	Total	Total Min	Female						Male					
			Total	White	Black	Hisp	Asian	Amlnd	Total	White	Black	Hisp	Asian	Amlnd
Arts & Sciences	61	17	20	13	2	4	1		41	31	5	2	3	
Education	3		3	3										
Government	4		2	2					2	2				
Information and Library Science	1								1	1				
Journalism	4	1	3	2	1				1	1				
Kenan Flagler	15	2	6	6					9	7			2	
Law	3		1	1					2	2				
Social Work	3	2	2		1		1		1	1				
Totals:	94	22	37	27	4	4	2		57	45	5	2	5	

Chart 15

**Tenured/Tenure Track Faculty End of Employment
Summary by College/School
September 1, 2007 – August 31, 2008
Academic Affairs**

School	Total	Total Min	Female						Male					
			Total	White	Black	Hisp	Asian	AmInd	Total	White	Black	Hisp	Asian	AmInd
Arts & Sciences	21	3	7	6			1		14	12	1	1		
Education	7	2	2	1	1				5	4			1	
Information and Library Science	2	1							2	1	1			
Journalism	3								3	3				
Kenan Flagler	2		1	1					1	1				
Law	5	1	2	2					3	2			1	
Totals:	40	7	12	10	1		1		28	23	2	1	2	

Chart 16

**Tenured/Tenure Track Faculty Hiring Summary by Rank
September 1, 2007 – August 31, 2008
Academic Affairs**

Rank	Total	Total Min	Female						Male					
			Total	White	Black	Hisp	Asian	AmInd	Total	White	Black	Hisp	Asian	AmInd
Distinguished Professor	8		2	2					6	6				
Professor	9	1	2	2					7	6	1			
Associate Professor	4	1	1	1					3	2	1			
Assistant Professor	62	15	29	20	3	4	2		33	27	2	2	2	
Instructor w/Special Provisions	11	5	3	2	1				8	4	1		3	
Totals:	94	22	37	27	4	4	2		57	45	5	2	5	

Source: Equal Opportunity Office Database

Chart 17

**Tenured/Tenure Track Faculty End of Employment by Rank
September 1, 2007 – August 31, 2008
Academic Affairs**

Rank	Total	Total Min	Female						Male					
			Total	White	Black	Hisp	Asian	AmInd	Total	White	Black	Hisp	Asian	AmInd
Distinguished Professor	13	2	4	4					9	7		1	1	
Professor	11		4	4					7	7				
Associate Professor	7	1	1	1					6	5	1			
Assistant Professor	9	4	3	1	1		1		6	4	1		1	
Totals:	40	7	12	10	1		1		28	23	2	1	2	

Source: Equal Opportunity Office Database

Chart 18

**Tenured/Tenure Track Faculty Hiring Summary by School
September 1, 2007 – August 31, 2008
Health Affairs**

School	Total	Total Min	Female							Male					
			Total	White	Black	Hisp	Asian	AmInd	Other Minority	Total	White	Black	Hisp	Asian	AmInd
Dentistry	6	2	1	1							5	3		1	1
Medicine	39	8	12	12							27	19	2		6
Nursing	6	3	5	2	2		1				1	1			
Pharmacy	8	1	3	2			1				5	5			
Public Health	11	1	7	6					1		4	4			
Totals:	70	15	28	23	2		2		1		42	32	2	1	7

Chart 19

**Tenured/Tenure Track Faculty End of Employment
Summary by College/School
September 1, 2007 – August 31, 2008
Health Affairs**

School	Total	Total Min	Female							Male					
			Total	White	Black	Hisp	Asian	Amlnd	Other Minority	Total	White	Black	Hisp	Asian	Amlnd
Dentistry	1	1	1		1										
Medicine	22	4	4	3				1			18	15	1	1	1
Nursing	1		1	1											
Pharmacy	1		1	1											
Public Health	3	1	1					1			2	2			
Totals:	28	6	8	5	1			2			20	17	1	1	1

Chart 20

**Tenured/Tenure Track Faculty Hiring Summary by Rank
September 1, 2007 – August 31, 2008
Health Affairs**

Rank	Total	Total Min	Female							Male					
			Total	White	Black	Hisp	Asian	AmInd	Other Minority	Total	White	Black	Hisp	Asian	AmInd
Distinguished Professor	1		1	1											
Professor	14		3	3						11	11				
Associate Professor	10	3	3	2			1			7	5	1	1		
Assistant Professor	45	12	21	17	2		1		1	24	16	1		7	
Totals:	70	15	28	23	2		2		1	42	32	2	1	7	

Source: Equal Opportunity Office Database

Chart 21

**Tenured/Tenure Track Faculty End of Employment by Rank
September 1, 2007 – August 31, 2008
Health Affairs**

Rank	Total	Total Min	Female							Male					
			Total	White	Black	Hisp	Asian	AmInd	Other Minority	Total	White	Black	Hisp	Asian	AmInd
Distinguished Professor	3		1	1							2	2			
Professor	9	2	1		1						8	7		1	
Associate Professor	6	1	2	2							4	3	1		
Assistant Professor	10	3	4	2				2			6	5			1
Totals:	28	6	8	5	1			2			20	17	1	1	1

Chart 22

**Fixed Term Hiring Summary by School
September 1, 2007 – August 31, 2008
Academic Affairs**

School	Total	Total Min	Female						Male					
			Total	White	Black	Hisp	Asian	AmInd	Total	White	Black	Hisp	Asian	AmInd
Arts & Sciences	29	12	20	13	1	2	4		9	4	3	2		
Education	1								1	1				
Government	3		1	1					2	2				
Information and Library Science	1								1	1				
Journalism	1								1	1				
Kenan Flagler	7	1	5	4		1			2	2				
Law	2		2	2										
Research & Econ Dev	1								1	1				
Social Work	14	2	12	12					2		2			
Totals:	59	15	40	32	1	3	4		19	12	5	2		

Source: Equal Opportunity Office Database

Chart 23

**Fixed Term Faculty End of Employment Summary by School
September 1, 2007 – August 31, 2008
Academic Affairs**

School	Total	Total Min	Female						Male					
			Total	White	Black	Hisp	Asian	AmInd	Total	White	Black	Hisp	Asian	AmInd
Arts & Sciences	10	2	4	2		1	1		6	6				
Education	2		1	1					1	1				
Government	1		1	1										
Kenan Flagler	4		1	1					3	3				
Social Work	7	1	7	6		1								
Totals:	24	3	14	11		2	1		10	10				

Chart 24

**Fixed Term Hiring Summary by Rank
September 1, 2007 – August 31, 2008
Academic Affairs**

Rank	Total	Total Min	Female						Male					
			Total	White	Black	Hisp	Asian	AmInd	Total	White	Black	Hisp	Asian	AmInd
Adjunct Assistant Professor	5		3	3					2	2				
Adjunct Professor	2		2	2										
Clinical Assistant Professor	6	2	4	3	1				2	1	1			
Clinical Instructor	11	2	9	9					2		2			
Lecturer	31	11	20	13		3	4		11	7	2	2		
Professor of the Practice	1								1	1				
Research Associate Professor	1								1	1				
Research Instructor	2		2	2										
Totals:	59	15	40	32	1	3	4		19	12	5	2		

Chart 25

**Fixed Term Faculty End of Employment by Rank
September 1, 2007 – August 31, 2008
Academic Affairs**

Rank	Total	Total Min	Female						Male					
			Total	White	Black	Hisp	Asian	Amlnd	Total	White	Black	Hisp	Asian	Amlnd
Adjunct Assistant Prof	2								2	2				
Adjunct Associate Prof	1								1	1				
Adjunct Professor	1								1	1				
Clinical Assistant Prof	1								1	1				
Clinical Associate Prof	1		1	1										
Clinical Instructor	6	1	6	5		1								
Lecturer	9	2	5	3		1	1		4	4				
Professor of the Prof	1		1	1										
Research Assistant Professor	1								1	1				
Research Associate Professor	1		1	1										
Totals:	24	3	14	11		2	1		10	10				

Source: Equal Opportunity Office Database

Chart 26

**Fixed Term Faculty Hiring Summary by School
September 1, 2007 – August 31, 2008
Health Affairs**

School	Total	Total Min	Female							Male					
			Total	White	Black	Hisp	Asian	AmInd	Other Minority	Total	White	Black	Hisp	Asian	AmInd
Dentistry	12	3	5	4			1			7	5	1		1	
Medicine	141	36	81	63	4	3	11			60	42	1	1	15	1
Nursing	14	1	14	13	1										
Pharmacy	14	6	5	3			2			9	5			4	
Public Health	8	4	5	3	2					3	1			2	
Totals:	189	50	110	86	7	3	14			79	53	2	1	22	1

Chart 27

**Fixed Term Faculty End of Employment by School
September 1, 2007 – August 31, 2008
Health Affairs**

School	Total	Total Min	Female							Male					
			Total	White	Black	Hisp	Asian	AmInd	Other Minority	Total	White	Black	Hisp	Asian	AmInd
Dentistry	5		2	2						3	3				
Medicine	64	18	26	22		1	3			38	24	2	2	10	
Nursing	4		4	4											
Pharmacy	1									1	1				
Public Health	9	1	6	5			1			3	3				
Totals:	83	19	38	33		1	4			45	31	2	2	10	

Chart 28

**Fixed Term Faculty Hiring Summary by Rank
September 1, 2007 – August 31, 2008
Health Affairs**

Rank	Total	Total Min	Female							Male					
			Total	White	Black	Hisp	Asian	AmInd	Other Minority	Total	White	Black	Hisp	Asian	AmInd
Adjunct Instructor	1		1	1											
Clinical Assistant Professor	79	20	48	34	4	2	8			31	25	1		5	
Clinical Associate Professor	17	4	3	2		1				14	11	1		2	
Clinical Instructor	40	4	33	32	1					7	4		1	1	1
Clinical Professor	4		1	1						3	3				
Professor of the Practice	2	1	1		1					1	1				
Research Assistant Professor	40	19	21	14	1		6			19	7			12	
Research Associate Professor	3	1	1	1						2	1			1	
Research Instructor	1		1	1											
Research Professor	2	1								2	1			1	
Totals:	189	50	110	86	7	3	14			79	53	2	1	22	1

Source: Equal Opportunity Office Database

Chart 29

**Fixed Term Faculty End of Employment by Rank
September 1, 2007 – August 31, 2008
Health Affairs**

Rank	Total	Total Min	Female							Male					
			Total	White	Black	Hisp	Asian	Amlnd	Other Minority	Total	White	Black	Hisp	Asian	Amlnd
Adjunct Professor	1		1	1											
Clinical Assistant Prof	29	8	16	13		1	2			13	8	2		3	
Clinical Associate Prof	8	1	1	1						7	6			1	
Clinical Instructor	12		8	8						4	4				
Clinical Professor	7	2	1	1						6	4			2	
Lecturer	1		1	1											
Research Assistant Professor	19	8	7	5			2			12	6		2	4	
Research Associate Professor	3		1	1						2	2				
Research Instructor	1		1	1											
Research Professor	2		1	1						1	1				
Totals:	83	19	38	33		1	4			45	31	2	2	10	

Source: Equal Opportunity Office Database

Chart 30

**Non Faculty Hiring Summary by School
September 1, 2007 – August 31, 2008**

School	Total	Total Min	Female						Male					
			Total	White	Black	Hisp	Asian	Amlnd	Total	White	Black	Hisp	Asian	Amlnd
Advancement	10	3	8	5	1	1	1		2	2				
Arts & Sciences	37	4	24	20	4				13	13				
Chancellor	8	2	1	1					7	5	2			
Dentistry	6	2	3	2	1				3	2			1	
Education	7	5	7	2	3	2								
Executive VC & Provost	80	15	49	38	9		2		31	27	2	1	1	
Finance & Admin	4		2	2					2	2				
Government	9	2	5	4			1		4	3			1	
Information & Lib Sci	2	1	2	1	1									
Information Tech Svcs	7	2	2	1	1				5	4	1			
Journalism	3		1	1					2	2				
Kenan Flagler	13	3	6	5	1				7	5	2			
Law	10	2	7	5	2				3	3				
Medicine	87	25	58	43	4	1	10		29	19			10	
Nursing	4	1	3	2		1			1	1				
Pharmacy	7	3	4	3	1				3	1		1	1	
Public Health	23	3	20	17	2		1		3	3				
Research & Econ Dev	51	14	31	23	6		1	1	20	14	2	1	3	
Social Work	1		1	1										
Student Affairs	25	6	12	8	4				13	11	1	1		
VC Public Svc/Engage	1		1	1										
Totals:	395	93	247	185	40	5	16	1	148	117	10	4	17	

Source: Equal Opportunity Office Database

Chart 31

**Non Faculty End of Employment by School
September 1, 2007 – August 31, 2008**

School	Total	Total Min	Female							Male				
			Total	White	Black	Hisp	Asian	AmInd	Other Minority	Total	White	Black	Hisp	Asian
Advancement	9	2	3	3						6	4	1	1	
Arts & Sciences	15	2	9	8	1					6	5			1
Chancellor	9	3	3	2	1					6	4	2		
Dentistry	1									1	1			
Education	5	2	5	3	2									
Engagement	2		2	2										
Executive VC & Provost	32	4	22	19	2		1			10	9			1
Finance & Admin	1		1	1										
Government	3		2	2						1	1			
Information Tech Svcs	2		2	2										
Journalism	1		1	1										
Kenan Flagler	9		6	6						3	3			
Law	2	1	2	1	1									
Medicine	30	10	24	17	2		5			6	3	1	1	1
Nursing	3	1	3	2	1									
Pharmacy	5	3	2	2						3		1		2
Public Health	17	1	13	12			1			4	4			
Research & Econ Dev	31	4	21	18		1	2			10	9			1
Student Affairs	14	2	11	10	1					3	2		1	
Totals:	191	35	132	111	11	1	9			59	45	5	3	6

Source: Equal Opportunity Office Database

Chart 32

**Non Faculty Hiring Summary by EEO Category
September 1, 2007 – August 31, 2008**

EEO Category	Total	Total Min	Female							Male					
			Total	White	Black	Hisp	Asian	Amlnd	Other Minority	Total	White	Black	Hisp	Asian	Amlnd
Administrative Officials	88	10	60	52	6	2				28	26	2			
EPA/Professional Non-Faculty/Instructional	148	32	90	65	21	2	2			58	51	5	2		
EPA Professional Non-Faculty/Research	159	51	97	68	13	1	14	1		62	40	3	2	17	
Totals:	395	93	247	185	40	5	16	1		148	117	10	4	17	

Source: Equal Opportunity Office Database

Chart 33

**Non Faculty End of Employment by EEO Category
September 1, 2007 – August 31, 2008**

EEO Category	Total	Total Min	Female							Male					
			Total	White	Black	Hisp	Asian	AmInd	Other Minority	Total	White	Black	Hisp	Asian	AmInd
Administrative Officials	28	2	17	16	1					11	10	1			
EPA/Professional Non-Faculty/Instructional	76	10	55	48	6		1			21	18	2	1		
EPA Professional Non-Faculty/Research	87	23	60	47	4	1	8			27	17	2	2	6	
Totals:	191	35	132	111	11	1	9			59	45	5	3	6	

Chart 34

**Faculty Promotions by Title
September 1, 2007 – August 31, 2008**

Rank	Total	Total Min	Female						Male					
			Total	White	Black	Hisp	Asian	AmInd	Total	White	Black	Hisp	Asian	AmInd
Distinguished Professor	2		1	1					1	1				
Professor	34	5	10	9			1		24	20	2		2	
Associate Professor	53	6	20	18	1		1		33	29			4	
Assistant Professor	1		1	1										
Clinical Professor	1								1	1				
Clinical Associate Professor	9	1	7	6		1			2	2				
Clinical Assistant Professor	11		11	11										
Research Professor	2								2	2				
Research Associate Professor	6		3	3					3	3				
Research Assistant Professor	3								3	3				
Totals:	122	12	53	49	1	1	2		69	61	2		6	

Source: Equal Opportunity Office Database

Chart 35

**Faculty Promotions by Rank
September 1, 2007 – August 31, 2008**

Rank	Total	Total Min	Female						Male					
			Total	White	Black	Hisp	Asian	AmInd	Total	White	Black	Hisp	Asian	AmInd
Tenured	89	11	31	28	1		2		58	50	2		6	
Tenure Track	1		1	1										
Fixed Term	32	1	21	20		1			11	11				
Totals:	122	12	53	49	1	1	2		69	61	2		6	

Source: Equal Opportunity Office Database

Chart 36

**Faculty Promotions by School
September 1, 2007 – August 31, 2008**

School	Total	Total Min	Female						Male					
			Total	White	Black	Hisp	Asian	Amlnd	Total	White	Black	Hisp	Asian	Amlnd
Arts & Sciences	30	3	10	9			1		20	18	1		1	
Dentistry	2		1	1					1	1				
Education	3	1	2	1			1		1	1				
Government	2		1	1					1	1				
Information and Library Science	1		1	1										
Journalism	4	1	1	1					3	2			1	
Kenan Flagler	3								3	3				
Law	1		1	1										
Medicine	49	5	18	17		1			31	27	1		3	
Nursing	6		6	6										
Pharmacy	6		2	2					4	4				
Public Health	12	2	8	7	1				4	3			1	
Social Work	3		2	2					1	1				
Totals:	122	12	53	49	1	1	2		69	61	2		6	

Chart 37

THE UNIVERSITY OF NORTH CAROLINA AT CHAPEL HILL
EPA PERSONNEL
MINORITY AND FEMALE PRESENCE REPORT (PNSP003)
EPA FACULTY BY RANK
AS OF SEP 2008

All Faculty																														
RANK	ETHNICITY																								GENDER				Total N	
	White				African-American				American Indian				Asian				Hispanic				Other				Male		Female			
	Male		Female		Male		Female		Male		Female		Male		Female		Male		Female		Male		Female		Male		Female			
	N	%	N	%	N	%	N	%	N	%	N	%	N	%	N	%	N	%	N	%	N	%	N	%	N	%	N	%		
Adjunct Assistant Prof	11	50	10	45.5	1	4.5	0	0	0	0	0	0	0	0	0	0	0	0	0	0	0	0	0	0	0	12	54.5	10	45.5	22
Adjunct Associate Prof	4	57.1	3	42.9	0	0	0	0	0	0	0	0	0	0	0	0	0	0	0	0	0	0	0	0	0	4	57.1	3	42.9	7
Adjunct Instructor	1	20	2	40	0	0	1	20	0	0	0	0	0	0	0	0	1	20	0	0	0	0	0	0	2	40	3	60	5	
Adjunct Professor	9	50	8	44.4	0	0	0	0	0	0	0	0	0	0	0	0	0	1	5.6	0	0	0	0	0	9	50	9	50	18	
Assistant Professor	152	36.3	136	32.5	14	3.3	22	5.3	3	0.7	0	0	44	10.5	23	5.5	17	4.1	7	1.7	0	0	1	0.2	230	54.9	189	45.1	419	
Associate Professor	261	51.8	147	29.2	11	2.2	19	3.8	2	0.4	1	0.2	38	7.5	14	2.8	4	0.8	7	1.4	0	0	0	0	316	62.7	188	37.3	504	
Clinical Assistant Prof	104	29.8	173	49.6	9	2.6	18	5.2	1	0.3	0	0	10	2.9	21	6	4	1.1	7	2	2	0.6	0	0	130	37.2	219	62.8	349	
Clinical Associate Prof	68	43.3	64	40.8	6	3.8	5	3.2	0	0	0	0	4	2.5	3	1.9	3	1.9	4	2.5	0	0	0	0	81	51.6	76	48.4	157	
Clinical Instructor	21	15.9	95	72	2	1.5	6	4.5	0	0	1	0.8	1	0.8	3	2.3	2	1.5	1	0.8	0	0	0	0	26	19.7	106	80.3	132	
Clinical Professor	41	62.1	22	33.3	1	1.5	0	0	0	0	0	0	0	0	0	0	2	3	0	0	0	0	0	0	44	66.7	22	33.3	66	
Dist Associate Prof	4	80	1	20	0	0	0	0	0	0	0	0	0	0	0	0	0	0	0	0	0	0	0	0	4	80	1	20	5	
Dist Professor	219	74.7	49	16.7	5	1.7	2	0.7	0	0	0	0	13	4.4	2	0.7	3	1	0	0	0	0	0	0	240	81.9	53	18.1	293	
Dist Term Assist Prof	0	0	0	0	0	0	0	0	0	0	0	0	0	0	0	0	1	100	0	0	0	0	0	0	1	100	0	0	1	
Dist Term Assoc Prof	3	33.3	4	44.4	0	0	1	11.1	0	0	0	0	0	0	0	0	1	11.1	0	0	0	0	0	0	4	44.4	5	55.6	9	
Dist Term Professor	23	74.2	6	19.4	0	0	1	3.2	0	0	0	0	0	0	1	3.2	0	0	0	0	0	0	0	0	23	74.2	8	25.8	31	
Instructor	5	41.7	2	16.7	1	8.3	2	16.7	0	0	0	0	2	16.7	0	0	0	0	0	0	0	0	0	0	8	66.7	4	33.3	12	
Lecturer	26	22.8	52	45.6	1	0.9	3	2.6	0	0	0	0	3	2.6	13	11.4	8	7	8	7	0	0	0	0	38	33.3	76	66.7	114	
Prof Of The Practice	5	62.5	2	25	0	0	1	12.5	0	0	0	0	0	0	0	0	0	0	0	0	0	0	0	0	5	62.5	3	37.5	8	
Professor	400	66.7	149	24.8	9	1.5	6	1	1	0.2	0	0	22	3.7	5	0.8	5	0.8	3	0.5	0	0	0	0	437	72.8	163	27.2	600	
Res Assistant Prof	78	32	91	37.3	1	0.4	5	2	0	0	0	0	38	15.6	24	9.8	3	1.2	4	1.6	0	0	0	0	120	49.2	124	50.8	244	
Res Associate Prof	29	38.2	29	38.2	0	0	1	1.3	0	0	0	0	10	13.2	4	5.3	1	1.3	2	2.6	0	0	0	0	40	52.6	36	47.4	76	
Research Instructor	8	28.6	12	42.9	0	0	1	3.6	0	0	0	0	3	10.7	2	7.1	1	3.6	1	3.6	0	0	0	0	12	42.9	16	57.1	28	
Research Professor	24	70.6	7	20.6	0	0	0	0	0	0	0	0	3	8.8	0	0	0	0	0	0	0	0	0	0	27	79.4	7	20.6	34	
Senior Lecturer	4	28.6	9	64.3	0	0	0	0	0	0	0	0	0	0	0	0	0	1	7.1	0	0	0	0	0	4	28.6	10	71.4	14	
Total	1500	47.6	1073	34.1	61	1.9	94	3	7	0.2	2	0.1	191	6.1	115	3.7	56	1.8	46	1.5	2	0.1	1	0	1817	57.7	1331	42.3	3148	

Source: Institutional Research PNSP003

Chart 38

**THE UNIVERSITY OF NORTH CAROLINA AT CHAPEL HILL
EPA PERSONNEL
MINORITY AND FEMALE PRESENCE REPORT (PNSP003)
EPA FACULTY BY RANK
AS OF SEP 2008**

Tenured Faculty																													
RANK	ETHNICITY																				GENDER				Total N				
	White				African-American				American Indian				Asian				Hispanic				Male		Female						
	Male		Female		Male		Female		Male		Female		Male		Female		Male		Female		Male		Female						
	N	%	N	%	N	%	N	%	N	%	N	%	N	%	N	%	N	%	N	%	N	%	N	%					
Assistant Professor	1	50	1	50	0	0	0	0	0	0	0	0	0	0	0	0	0	0	0	0	0	0	0	0	0	2			
Associate Professor	248	51.8	141	29.4	10	2.1	18	3.8	2	0	1	0.2	36	7.5	13	2.7	3	0.6	7	1.5	299	62.4	180	37.6	479				
Dist Associate Professor	4	80	1	20	0	0	0	0	0	0	0	0	0	0	0	0	0	0	0	0	0	0	0	0	4	80	1	20	5
Distinguished Professor	219	74.7	49	16.7	5	1.7	2	0.7	0	0	0	0	13	4.4	2	0.7	3	1	0	0	240	81.9	53	18.1	293				
Dist Term Associate Prof	3	33.3	4	44.4	0	0	1	11	0	0	0	0	0	0	0	0	0	1	11	0	0	4	44.4	5	55.6	9			
Dist Term Professor	23	74.2	6	19.4	0	0	1	3.2	0	0	0	0	0	0	1	3.2	0	0	0	0	23	74.2	8	25.8	31				
Professor	400	66.7	149	24.8	9	1.5	6	1	1	0	0	0	22	3.7	5	0.8	5	0.8	3	0.5	437	72.8	163	27.2	600				
Total	898	63.3	351	24.7	24	1.7	28	2	3	0	1	0.1	71	5	21	1.5	12	0.8	10	0.7	1008	71	411	29	1419				

Source: Institutional Research PNSP003

Chart 39

THE UNIVERSITY OF NORTH CAROLINA AT CHAPEL HILL
EPA PERSONNEL
MINORITY AND FEMALE PRESENCE REPORT (PNSP003)
EPA FACULTY BY RANK
AS OF SEP 2008

Tenure Track Faculty																									
RANK	ETHNICITY																				GENDER				Total N
	White				African-American				American Indian		Asian				Hispanic				Other		Male		Female		
	Male		Female		Male		Female		Male		Male		Female		Male		Female		Female		Male		Female		
	N	%	N	%	N	%	N	%	N	%	N	%	N	%	N	%	N	%	N	%	N	%	N	%	
Assistant Professor	151	36.2	135	32.4	14	3.4	22	5.3	3	0.7	44	10.6	23	5.5	17	4.1	7	1.7	1	0.2	229	54.9	188	45.1	417
Associate Professor	13	52	6	24	1	4	1	4	0	0	2	8	1	4	1	4	0	0	0	0	17	68	8	32	25
Clinical Assistant Prof	1	100	0	0	0	0	0	0	0	0	0	0	0	0	0	0	0	0	0	0	1	100	0	0	1
Dist Term Assist Prof	0	0	0	0	0	0	0	0	0	0	0	0	0	0	0	1	100	0	0	0	1	100	0	0	1
Total	165	37.2	141	31.8	15	3.4	23	5.2	3	0.7	46	10.4	24	5.4	19	4.3	7	1.6	1	0.2	248	55.9	196	44.1	444

Source: Institutional Research PNSP003

Chart 40

**THE UNIVERSITY OF NORTH CAROLINA AT CHAPEL HILL
EPA PERSONNEL
MINORITY AND FEMALE PRESENCE REPORT (PNSP003)
EPA FACULTY BY RANK
AS OF SEP 2008**

Fixed Term Faculty																														
RANK	ETHNICITY																				GENDER				Total N					
	White				African-American				American Indian				Asian				Hispanic				Other		Male			Female				
	Male		Female		Male		Female		Male		Female		Male		Female		Male		Female		Male		Female							
	N	%	N	%	N	%	N	%	N	%	N	%	N	%	N	%	N	%	N	%	N	%	N	%						
Adj Assistant Professor	11	50	10	45.5	1	4.5	0	0	0	0	0	0	0	0	0	0	0	0	0	0	0	0	0	0	0	12	54.5	10	45.5	22
Adj Associate Professor	4	57.1	3	42.9	0	0	0	0	0	0	0	0	0	0	0	0	0	0	0	0	0	0	0	0	0	4	57.1	3	42.9	7
Adjunct Instructor	1	20	2	40	0	0	1	20	0	0	0	0	0	0	0	0	0	1	20	0	0	0	0	0	0	2	40	3	60	5
Adjunct Professor	9	50	8	44.4	0	0	0	0	0	0	0	0	0	0	0	0	0	0	1	5.6	0	0	0	0	9	50	9	50	18	
Clinical Assistant Prof	103	29.6	173	49.7	9	2.6	18	5.2	1	0.3	0	0	10	2.9	21	6	4	1.1	7	2	2	0.6	129	37.1	219	62.9	348			
Clinical Associate Prof	68	43.3	64	40.8	6	3.8	5	3.2	0	0	0	0	4	2.5	3	1.9	3	1.9	4	2.5	0	0	81	51.6	76	48.4	157			
Clinical Instructor	21	15.9	95	72	2	1.5	6	4.5	0	0	1	0.8	1	0.8	3	2.3	2	1.5	1	0.8	0	0	26	19.7	106	80.3	132			
Clinical Professor	41	62.1	22	33.3	1	1.5	0	0	0	0	0	0	0	0	0	0	2	3	0	0	0	0	44	66.7	22	33.3	66			
Instructor	5	41.7	2	16.7	1	8.3	2	16.7	0	0	0	0	2	16.7	0	0	0	0	0	0	0	0	0	8	66.7	4	33.3	12		
Lecturer	26	22.8	52	45.6	1	0.9	3	2.6	0	0	0	0	3	2.6	13	11.4	8	7	8	7	0	0	38	33.3	76	66.7	114			
Prof Of The Practice	5	62.5	2	25	0	0	1	12.5	0	0	0	0	0	0	0	0	0	0	0	0	0	0	0	5	62.5	3	37.5	8		
Research Assistant Prof	78	32	91	37.3	1	0.4	5	2	0	0	0	0	38	15.6	24	9.8	3	1.2	4	1.6	0	0	120	49.2	124	50.8	244			
Research Associate Prof	29	38.2	29	38.2	0	0	1	1.3	0	0	0	0	10	13.2	4	5.3	1	1.3	2	2.6	0	0	40	52.6	36	47.4	76			
Research Instructor	8	28.6	12	42.9	0	0	1	3.6	0	0	0	0	3	10.7	2	7.1	1	3.6	1	3.6	0	0	12	42.9	16	57.1	28			
Research Professor	24	70.6	7	20.6	0	0	0	0	0	0	0	0	3	8.8	0	0	0	0	0	0	0	0	27	79.4	7	20.6	34			
Senior Lecturer	4	28.6	9	64.3	0	0	0	0	0	0	0	0	0	0	0	0	0	0	1	7.1	0	0	4	28.6	10	71.4	14			
Total	437	34	581	45.2	22	1.7	43	3.3	1	0.1	1	0.1	74	5.8	70	5.4	25	1.9	29	2.3	2	0.2	561	43.7	724	56.3	1285			

Source: Institutional Research PNSP003

Chart 41

**THE UNIVERSITY OF NORTH CAROLINA AT CHAPEL HILL
EPA PERSONNEL
MINORITY AND FEMALE PRESENCE REPORT (PNSP003)
SUMMARY OF TENURED AND TENURE TRACK FACULTY BY SCHOOL
AS OF SEP 2008**

Academic Affairs																																					
SCHOOL	White						African-American						American Indian						Asian						Hispanic						All				Total		
	Male		Female		Total		Male		Female		Total		Male		Female		Total		Male		Female		Total		Male		Female										
	N	%	N	%	N	%	N	%	N	%	N	%	N	%	N	%	N	%	N	%	N	%	N	%	N	%	N	%	N	%							
Arts & Sciences	413	83.9	167	75.9	580	81.5	20	4.1	23	10.5	43	6.6	4	0.8	1	0.5	5	0.7	37	7.5	19	8.6	56	7.9	18	3.7	10	4.5	28	3.9	492	69.1	220	30.9	712		
Business	52	82.5	11	84.6	63	82.9	1	1.6	0	0	1	1.3	1	1.6	0	0	1	1.3	9	14.3	2	15.4	11	15	0	0	0	0	0	0	0	0	63	82.9	13	17.1	76
Education	11	91.7	20	74.1	31	79.5	1	8.3	5	18.5	6	15.4	0	0	0	0	0	0	0	0	2	7.4	2	5.1	0	0	0	0	0	0	0	12	30.8	27	69.2	39	
Govt	24	92.3	14	100	38	95	2	7.7	0	0	2	5	0	0	0	0	0	0	0	0	0	0	0	0	0	0	0	0	0	0	0	26	65	14	35	40	
Info & Lib	6	85.7	10	90.9	16	88.9	0	0	1	9.1	1	5.6	0	0	0	0	0	0	1	14.3	0	0	1	5.6	0	0	0	0	0	0	0	7	38.9	11	61.1	18	
Journalism	18	78.3	14	82.4	32	80	1	4.3	1	5.9	2	5	0	0	0	0	0	0	2	8.7	0	0	2	5	2	8.7	2	11.8	4	10	23	57.5	17	42.5	40		
Law	19	86.4	12	85.7	31	86.1	2	9.1	1	7.1	3	8.3	0	0	0	0	0	0	1	4.5	1	7.1	2	5.6	0	0	0	0	0	0	0	22	61.1	14	38.9	36	
Social Work	9	75	10	71.4	19	73.1	2	16.7	3	21.4	5	19.2	0	0	0	0	0	0	1	8.3	1	7.1	2	7.7	0	0	0	0	0	0	0	12	46.2	14	53.8	26	
Chancellor	1	100	0	0	1	100	0	0	0	0	0	0	0	0	0	0	0	0	0	0	0	0	0	0	0	0	0	0	0	0	1	100	0	0	1		
Libraries	0	0	1	100	1	0	0	0	0	0	0	0	0	0	0	0	0	0	0	0	0	0	0	0	0	0	0	0	0	0	0	0	1	100	1		
VC Res & Econ Dev	6	85.7	1	100	7	87.5	0	0	0	0	0	0	0	0	0	0	0	0	0	0	0	0	0	0	1	14	0	1	12.5	7	87.5	1	12.5	8			
Total	559	84	260	78.3	819	82.1	29	4.3	34	10.2	63	6.3	5	0.8	1	0.3	6	0.6	51	7.7	25	7.5	76	7.6	21	3.1	12	3.6	33	3.3	665	66.7	332	33.3	997		

Source: Institutional Research PNSP003

Chart 42

THE UNIVERSITY OF NORTH CAROLINA AT CHAPEL HILL
EPA PERSONNEL
MINORITY AND FEMALE PRESENCE REPORT (PNSP003)
SUMMARY OF TENURED AND TENURE TRACK FACULTY BY SCHOOL
AS OF SEP 2008

Health Affairs																																									
SCHOOL	White						African-American						American Indian						Asian						Hispanic						Other						All				Total
	Male		Female		Total		Male		Female		Total		Male		Female		Total		Male		Female		Total		Male		Female		Total		Male		Female								
	N	%	N	%	N	%	N	%	N	%	N	%	N	%	N	%	N	%	N	%	N	%	N	%	N	%	N	%	N	%	N	%	N	%	N	%					
Sch Dentistry	37	88.1	12	70.6	49	83.1	1	2.4	2	11.8	3	5.1	0	0	0	0	0	0	3	7.1	3	17.6	6	10.2	1	2.4	0	0	1	1.7	0	0	0	0	0	0	42	71.2	17	28.8	59
Sch Medicine	373	86.1	137	86.2	510	86.1	8	1.8	7	4.4	15	2.5	1	0.2	0	0	1	0.2	44	10.2	11	6.9	55	9.3	7	1.6	4	2.5	11	1.9	0	0	0	0	0	0	433	73.1	159	26.9	592
Sch Nursing	2	100	28	82.4	30	83.3	0	0	4	11.8	4	11.1	0	0	0	0	0	0	0	0	2	5.9	2	5.6	0	0	0	0	0	0	0	0	0	0	0	0	2	5.6	34	94.4	36
Sch Pharmacy	29	78.4	8	88.9	37	80.4	0	0	0	0	0	0	0	0	0	0	0	0	8	21.6	1	11.1	9	19.6	0	0	0	0	0	0	0	0	0	0	0	0	37	80.4	9	19.6	46
Sch Pub Hlth	63	81.8	47	83.9	110	82.7	1	1.3	4	7.1	5	3.8	0	0	0	0	0	0	11	14.3	3	5.4	14	10.5	2	2.6	1	1.8	3	2.3	0	0	1	1.8	1	0.8	77	57.9	56	42.1	133
Total	504	85.3	232	84.4	736	85	10	1.7	17	6.2	27	3.1	1	0.2	0	0	1	0.1	66	11.2	20	7.3	86	9.9	10	1.7	5	1.8	15	1.7	0	0	1	0.4	1	0.1	591	68.2	275	31.8	866

Source: Institutional Research PNSP003

Chart 43

**THE UNIVERSITY OF NORTH CAROLINA AT CHAPEL HILL
EPA PERSONNEL
MINORITY AND FEMALE PRESENCE REPORT (PNSP003)
EPA FACULTY BY RANK
AS OF SEP 2008**

Academic Affairs, (Tenured Faculty)																												
RANK	ETHNICITY																				ALL				Total N			
	White				African-				American				Asian				Hispanic				Male		Female					
	Male		Female		Male		Female		Male		Female		Male		Female		Male		Female		Male		Female					
	N	%	N	%	N	%	N	%	N	%	N	%	N	%	N	%	N	%	N	%	N	%	N	%				
Assistant Professor	0	0	1	100	0	0	0	0	0	0	0	0	0	0	0	0	0	0	0	0	0	0	0	0	1	100	1	
Associate Professor	120	49.4	70	28.8	7	2.9	11	4.5	1	0.4	1	0.4	20	8.2	6	2.5	2	0.8	5	2.1	150	61.7	93	38.3	243			
Dist Associate Professor	1	100	0	0	0	0	0	0	0	0	0	0	0	0	0	0	0	0	0	0	0	0	0	1	100	0	0	1
Distinguished Professor	141	73.4	38	20	5	2.6	2	1	0	0	0	0	4	2.1	0	0	2	1	0	0	152	79.2	40	20.8	192			
Dist Term Assoc Professor	1	20	4	80	0	0	0	0	0	0	0	0	0	0	0	0	0	0	0	0	1	20	4	80	5			
Dist Term Professor	22	75.9	5	17.2	0	0	1	3.4	0	0	0	0	0	0	1	3.4	0	0	0	0	22	75.9	7	24.1	29			
Professor	180	64.7	67	24.1	8	2.9	5	1.8	1	0.4	0	0	11	4	2	0.7	3	1.1	1	0.4	203	73	75	27	278			
Total	465	62.1	185	24.7	20	2.7	19	2.5	2	0.3	1	0.1	35	4.67	9	1.2	7	0.9	6	0.8	529	70.6	220	29.4	749			

*(Includes 7 Other Tenured Faculty)

Source: Institutional Research PNSP003

Chart 44

**THE UNIVERSITY OF NORTH CAROLINA AT CHAPEL HILL
EPA PERSONNEL
MINORITY AND FEMALE PRESENCE REPORT (PNSP003)
EPA FACULTY BY RANK
AS OF SEP 2008**

Academic Affairs, (Tenure Track Faculty)																							
RANK	ETHNICITY																		ALL				Total
	White				African-American				American Indian		Asian				Hispanic				Male		Female		N
	Male		Female		Male		Female		Male		Male		Female		Male		Female		N	%	N	%	
N	%	N	%	N	%	N	%	N	%	N	%	N	%	N	%	N	%	N	%	N	%	N	
Assistant Professor	90	37.8	72	30.2	9	3.8	14	5.9	3	1.3	16	6.7	16	6.7	12	5	6	2.5	130	54.6	108	45.6	238
Associate Professor	4	44.4	3	33.3	0	0	1	11.1	0	0	0	0	0	0	1	11.1	0	0	5	55.6	4	44.4	9
Dist Term Assistant Professor	0	0	0	0	0	0	0	0	0	0	0	0	0	0	1	100	0	0	1	100	0	0	1
Total	94	38	75	30.2	9	3.6	15	6	3	1.2	16	6.4	16	6.4	14	5.6	6	2.4	136	54.8	112	45.2	248

*(Includes 3 Other Tenure Track Faculty)

Source: Institutional Research PNSP003

Chart 45

THE UNIVERSITY OF NORTH CAROLINA AT CHAPEL HILL
EPA PERSONNEL
MINORITY AND FEMALE PRESENCE REPORT (PNSP003)
EPA FACULTY BY RANK
AS OF SEP 2008

Academic Affairs, (Fixed Term Faculty)																						
RANK	ETHNICITY																ALL				Total N	
	White				African-American				Asian				Hispanic				Male		Female			
	Male		Female		Male		Female		Male		Female		Male		Female		Male		Female			
	N	%	N	%	N	%	N	%	N	%	N	%	N	%	N	%	N	%	N	%		
Adjunct Assistant Professor	9	47.4	9	47.4	1	5.3	0	0	0	0	0	0	0	0	0	0	0	10	52.6	9	47.4	19
Adjunct Associate Professor	4	57.1	3	42.9	0	0	0	0	0	0	0	0	0	0	0	0	0	4	57.1	3	42.9	7
Adjunct Professor	8	53.3	6	40	0	0	0	0	0	0	0	0	0	0	1	6.7	8	53.3	7	46.7	15	
Clinical Assistant Professor	3	13	15	65.2	1	4.3	3	13	0	0	0	0	0	0	1	4.3	4	17.4	19	82.6	23	
Clinical Associate Professor	5	41.7	5	41.7	0	0	1	8.3	0	0	0	0	0	0	1	8.3	5	41.7	7	58.3	12	
Clinical Instructor	3	17.6	12	70.6	2	11.8	0	0	0	0	0	0	0	0	0	0	5	29.4	12	70.6	17	
Clinical Professor	0	0	7	87.5	1	12.5	0	0	0	0	0	0	0	0	0	0	1	12.5	7	87.5	8	
Instructor	5	41.7	2	16.7	1	8.3	2	16.7	2	16.7	0	0	0	0	0	0	8	66.7	4	33.3	12	
Lecturer	25	22.5	50	45	1	0.9	3	2.7	3	2.7	13	11.7	8	7.2	8	7.2	37	33.3	74	66.7	111	
Prof Of The Practice	4	100	0	0	0	0	0	0	0	0	0	0	0	0	0	0	4	100	0	0	4	
Research Assistant Professor	12	60	4	20	0	0	0	0	2	10	1	5	1	5	0	0	15	75	5	25	20	
Research Associate Professor	4	57.4	2	28.6	0	0	0	0	0	0	1	14.3	0	0	0	0	4	57.1	3	42.9	7	
Research Instructor	1	25	3	75	0	0	0	0	0	0	0	0	0	0	0	0	1	25	3	75	4	
Research Professor	5	83.3	0	0	0	0	0	0	16.7	20	0	0	0	0	0	0	6	100	0	0	6	
Senior Lecturer	4	28.6	9	64.3	0	0	0	0	0	0	0	0	0	0	1	7.1	4	28.6	10	71.4	14	
Total	92	33	127	45.5	7	2.5	9	3.2	8	2.9	15	5.4	9	3.2	12	4.3	116	41.6	163	58.4	279	

*(Includes 5 Other Fixed Term Faculty)

Source: Institutional Research PNSP003

Chart 46

**THE UNIVERSITY OF NORTH CAROLINA AT CHAPEL HILL
EPA PERSONNEL
MINORITY AND FEMALE PRESENCE REPORT (PNSP003)
EPA FACULTY BY RANK
AS OF SEP 2008**

Health Affairs, (Tenured Faculty)																							
RANK	ETHNICITY																		ALL		Total		
	White				African-American				American Indian		Asian				Hispanic								
	Male		Female		Male		Female		Male		Male		Female		Male		Female		Male		Female		
	N	%	N	%	N	%	N	%	N	%	N	%	N	%	N	%	N	%	N	%	N	%	
Assistant Professor	1	100	0	0	0	0	0	0	0	0	0	0	0	0	0	0	0	0	0	0	0	1	
Associate Professor	128	54.2	71	30.1	3	1.3	7	3	1	0.4	16	6.8	7	3	1	0.4	2	0.8	149	63.1	87	36.9	236
Distinguished Associate Professor	3	75	1	25	0	0	0	0	0	0	0	0	0	0	0	0	0	0	3	75	1	25	4
Distinguished Professor	78	77.2	11	10.9	0	0	0	0	0	0	9	8.9	2	2	1	1	0	0	88	87.1	13	12.9	101
Dist Term Associate Professor	2	50	0	0	0	0	1	25	0	0	0	0	0	0	1	25	0	0	3	75	1	25	4
Distinguished Term Professor	1	50	1	50	0	0	0	0	0	0	0	0	0	0	0	0	0	0	1	50	1	50	2
Professor	220	68.3	82	25.5	1	0.3	1	0.3	0	0	11	3.4	3	0.9	2	0.6	2	0.6	234	72.7	88	27.3	322
Total	433	64.6	166	24.8	4	0.6	9	1.3	1	0.1	36	5.4	12	1.8	5	0.7	4	0.6	479	71.5	191	28.5	670

Source: Institutional Research PNSP003

Chart 47

**THE UNIVERSITY OF NORTH CAROLINA AT CHAPEL HILL
EPA PERSONNEL
MINORITY AND FEMALE PRESENCE REPORT (PNSP003)
EPA FACULTY BY RANK
AS OF SEP 2008**

Health Affairs, (Tenure Track Faculty)																							
RANK	ETHNICITY																		ALL		Total		
	White				African-American				Asian				Hispanic				Other						
	Male		Female		Male		Female		Male		Female		Male		Female		Female		Male			Female	
	N	%	N	%	N	%	N	%	N	%	N	%	N	%	N	%	N	%	N	%		N	%
Assistant Professor	61	34.1	63	35.2	5	2.8	8	4.5	28	15.6	7	3.9	5	2.8	1	0.6	1	0.6	99	55.3	80	44.7	179
Associate Professor	9	56.3	3	18.8	1	6.3	0	0	2	12.5	1	6.3	0	0	0	0	0	0	12	75	4	25	16
Clinical Assistant Professor	1	100	0	0	0	0	0	0	0	0	0	0	0	0	0	0	0	0	1	100	0	0	1
Total	71	36.2	66	33.7	6	3.1	8	4.1	30	15.3	8	4.1	5	2.6	1	0.5	1	0.5	112	57.1	84	42.9	196

Source: Institutional Research PNSP003

Chart 48

**THE UNIVERSITY OF NORTH CAROLINA AT CHAPEL HILL
EPA PERSONNEL
MINORITY AND FEMALE PRESENCE REPORT (PNSP003)
EPA FACULTY BY RANK
AS OF SEP 2008**

Health Affairs, (Fixed Term Faculty)																													
RANK	ETHNICITY																				ALL				Total N				
	White				African-American				American Indian				Asian				Hispanic				Other		Male			Female			
	Male		Female		Male		Female		Male		Female		Male		Female		Male		Female		Male		Female			Male		Female	
	N	%	N	%	N	%	N	%	N	%	N	%	N	%	N	%	N	%	N	%	N	%	N	%		N	%	N	%
Adj Assistant Professor	2	66.7	1	33.3	0	0	0	0	0	0	0	0	0	0	0	0	0	0	0	0	0	0	0	2	66.7	1	33.3	3	
Adjunct Instructor	1	20	2	40	0	0	1	20	0	0	0	0	0	0	0	0	1	20	0	0	0	0	2	40	3	60	5		
Adjunct Professor	1	33.3	2	66.7	0	0	0	0	0	0	0	0	0	0	0	0	0	0	0	0	0	0	1	33.3	2	66.7	3		
Clinical Assistant Prof	100	30.8	158	48.6	8	2.5	15	4.6	1	0	0	0	10	3.1	21	6.5	4	1.2	6	1.8	2	0.6	125	38.5	200	61.5	325		
Clinical Associate Prof	63	43.4	59	40.7	6	4.1	4	2.8	0	0	0	0	4	2.8	3	2.1	3	2.1	3	2.1	0	0	76	52.4	69	47.6	145		
Clinical Instructor	18	15.7	83	72.2	0	0	6	5.2	0	0	1	0.9	1	0.9	3	2.6	2	1.7	1	0.9	0	0	21	18.3	94	81.7	115		
Clinical Professor	41	70.7	15	25.9	0	0	0	0	0	0	0	0	0	0	0	0	2	3.4	0	0	0	0	43	74.1	15	25.9	58		
Lecturer	1	33.3	2	66.7	0	0	0	0	0	0	0	0	0	0	0	0	0	0	0	0	0	0	1	33.3	2	66.7	3		
Prof Of The Practice	1	25	2	50	0	0	1	25	0	0	0	0	0	0	0	0	0	0	0	0	0	0	1	25	3	75	4		
Res Assistant Prof	66	29.5	87	38.8	1	0.4	5	2.2	0	0	0	0	36	16.1	23	10	2	0.9	4	1.8	0	0	105	46.9	119	53.1	224		
Res Associate Prof	25	36.2	27	39.1	0	0	1	1.4	0	0	0	0	10	14.5	3	4.3	1	1.4	2	2.9	0	0	36	52.2	33	47.8	69		
Research Instructor	7	29.2	9	37.5	0	0	1	4.2	0	0	0	0	3	12.5	2	8.3	1	4.2	1	4.2	0	0	11	45.8	13	54.2	24		
Research Professor	19	67.9	7	25	0	0	0	0	0	0	0	0	2	7.1	0	0	0	0	0	0	0	0	21	75	7	25	28		
Total	345	34.3	454	45.1	15	1.5	34	3.4	1	0	1	0.1	66	6.6	55	5.5	16	1.6	17	1.7	2	0.2	445	44.2	561	55.8	1006		

Source: Institutional Research PNSP003

Chart 49

**Non - Faculty Summary by Rank
September 1, 2008**

Rank	Total	Total Min	Female						Male					
			Total	White	Black	Hisp	Asian	AmInd	Total	White	Black	Hisp	Asian	AmInd
SAAO – Tier 1	21	1	9	8	1				12	12				
SAAO – Tier 2	355	50	211	180	23		5	3	144	125	16		2	1
Research	676	182	391	295	38	11	46	1	285	199	12	8	65	1
Instructional	658	101	386	318	47	6	11	4	272	239	21	6	5	1
Totals:	1710	334	997	801	109	17	62	8	713	575	49	14	72	3

Source: Institutional Research PNSP003

Chart 50

**THE UNIVERSITY OF NORTH CAROLINA AT CHAPEL HILL
EPA PERSONNEL
MINORITY AND FEMALE PRESENCE REPORT (PNSP003)
SUMMARY OF EPA NON-FACULTY BY SCHOOL
AS OF SEP 2008**

Academic Affairs																																			
SCHOOL	White						African-American						American Indian						Asian						Hispanic						All				All
	Male		Female		Total		Male		Female		Total		Male		Female		Total		Male		Female		Total		Male		Female								
	N	%	N	%	N	%	N	%	N	%	N	%	N	%	N	%	N	%	N	%	N	%	N	%	N	%	N	%	N	%					
Arts & Sciences	51	37.5	58	42.6	109	100	6	4.4	6	4.4	12	100	1	0.7	0	0	1	100	7	5.1	4	2.9	11	100	1	0.7	2	1.5	3	100	66	48.5	70	51.5	136
Sch Business	28	41.2	31	45.6	59	100	2	2.9	5	7.4	7	100	0	0	0	0	0	0	0	1	1.5	1	100	0	0	1	1.5	1	100	30	44.1	38	55.9	68	
Sch Education	3	15	10	50	13	100	1	5	4	20	5	100	0	0	0	0	0	0	0	0	0	0	0	0	0	2	10	2	100	4	20	16	80	20	
Sch Govt	8	38.1	10	47.6	18	100	0	0	1	4.8	1	100	0	0	0	0	0	0	1	4.8	1	4.8	2	100	0	0	0	0	0	0	9	42.9	12	57.1	21
Sch Info & Lib	2	25	4	50	6	100	1	12.5	1	12.5	2	100	0	0	0	0	0	0	0	0	0	0	0	0	0	0	0	0	0	0	3	37.5	5	62.5	8
Sch Journalism	6	40	8	53.3	14	100	0	0	1	6.7	1	100	0	0	0	0	0	0	0	0	0	0	0	0	0	0	0	0	0	6	40	9	60	15	
Sch Law	8	29.6	14	51.9	22	100	1	3.7	2	7.4	3	100	0	0	1	3.7	1	100	0	0	0	0	0	0	0	0	1	3.7	1	100	9	33.3	18	66.7	27
Sch Social Work	2	28.6	4	57.1	6	100	0	0	1	14.3	1	100	0	0	0	0	0	0	0	0	0	0	0	0	0	0	0	0	0	2	28.6	5	71.4	7	
Total	108	35.8	139	46	247	100	11	3.6	21	7	32	100	1	0.3	1	0.3	2	100	8	2.6	6	2	14	100	1	0.3	6	2	7	100	129	42.7	173	57.3	302

Source: Institutional Research PNSP003

Chart 51

**THE UNIVERSITY OF NORTH CAROLINA AT CHAPEL HILL
EPA PERSONNEL
MINORITY AND FEMALE PRESENCE REPORT (PNSP003)
SUMMARY OF EPA NON-FACULTY BY SCHOOL
AS OF SEP 2008**

Health Affairs																																		
SCHOOL	White						African-American						Asian						Hispanic						All				All					
	Male		Female		Total		Male		Female		Total		Male		Female		Total		Male		Female		Total		Male		Female							
	N	%	N	%	N	%	N	%	N	%	N	%	N	%	N	%	N	%	N	%	N	%	N	%	N	%	N	%						
Sch Dentistry	5	38.5	5	38.5	10	100	0	0	1	7.7	1	100	1	7.7	1	7.7	2	100	0	0	0	0	0	0	0	0	0	0	0	6	46.2	7	53.8	13
Sch Medicine	78	24.9	145	46.3	223	100	3	1	11	3.5	14	100	41	13.1	28	8.9	69	100	3	1	4	1.3	7	100	125	39.9	188	60.1	313					
Sch Nursing	1	6.7	11	73.3	12	100	0	0	2	13.3	2	100	0	0	0	0	0	0	0	0	1	6.7	1	100	1	6.7	14	93.3	15					
Sch Pharmacy	5	31.3	6	37.5	11	100	0	0	1	6.3	1	100	1	6.3	2	12.5	3	100	1	6.3	0	0	1	100	7	43.8	9	56.3	16					
Sch Pub Hlth	28	27.2	66	64.1	94	100	0	0	3	2.9	3	100	0	0	4	3.9	4	100	1	1	1	1	2	100	29	28.2	74	71.8	103					
Total	117	25.4	233	50.7	350	100	3	0.7	18	3.9	21	100	43	9.3	35	7.6	78	100	5	1.1	6	1.3	11	100	168	36.5	292	63.5	460					

Source: Institutional Research PNSP003

Chart 52

**THE UNIVERSITY OF NORTH CAROLINA AT CHAPEL HILL
EPA PERSONNEL
MINORITY AND FEMALE PRESENCE REPORT (PNSP003)
SUMMARY OF EPA NON-FACULTY BY SCHOOL
AS OF SEP 2008**

Other	White						African-American						American Indian						Asian						Hispanic						All				All	
	Male		Female		Total		Male		Female		Total		Male		Female		Total		Male		Female		Total		Male		Female									
	N	%	N	%	N	%	N	%	N	%	N	%	N	%	N	%	N	%	N	%	N	%	N	%	N	%	N	%	N	%						
SCHOOL	N	%	N	%	N	%	N	%	N	%	N	%	N	%	N	%	N	%	N	%	N	%	N	%	N	%	N	%	N	%	N					
Assoc VC Camp Svc	12	75	2	12.5	14	100	1	6.3	0	0	1	100	0	0	0	0	0	0	1	6.3	0	0	1	100	0	0	0	0	0	0	0	14	87.5	2	12.5	16
Assoc VC Fac Plan & Const	3	60	1	20	4	100	0	0	0	0	0	0	0	0	0	0	0	0	0	0	1	20	1	100	0	0	0	0	0	0	0	3	60	2	40	5
Assoc VC Fin	4	40	5	50	9	100	0	0	0	0	0	0	0	0	0	0	0	0	0	0	1	10	1	100	0	0	0	0	0	0	0	4	40	6	60	10
Assoc VC HR	5	55.6	3	33.3	8	100	0	0	1	11.1	1	100	0	0	0	0	0	0	0	0	0	0	0	0	0	0	0	0	0	0	5	55.6	4	44.4	9	
Athletics	72	60	27	22.5	99	100	12	10	5	4.2	17	100	1	0.8	1	0.8	2	100	1	0.8	0	0	1	100	1	0.8	0	0	1	100	87	72.5	33	27.5	120	
CIO	15	53.6	9	32.1	24	100	1	3.6	1	3.6	2	100	0	0	0	0	0	0	2	7.1	0	0	2	100	0	0	0	0	0	0	18	64.3	10	35.7	28	
Chancellor	6	33.3	10	55.6	16	100	1	5.6	1	5.6	2	100	0	0	0	0	0	0	0	0	0	0	0	0	0	0	0	0	0	0	0	7	38.9	11	61.1	18
Cont Ed	6	42.9	6	42.9	12	100	0	0	2	14.3	2	100	0	0	0	0	0	0	0	0	0	0	0	0	0	0	0	0	0	0	6	42.9	8	57.1	14	
Ctrs and Inst	25	36.2	28	40.6	53	100	1	1.4	9	13	10	100	0	0	1	1.4	1	100	3	4.3	2	2.9	5	100	0	0	0	0	0	0	0	29	42	40	58	69
Grad School	2	28.6	4	57.1	6	100	1	14.3	0	0	1	100	0	0	0	0	0	0	0	0	0	0	0	0	0	0	0	0	0	0	3	42.9	4	57.1	7	
Libraries	42	30	87	62.1	129	100	1	0.7	5	3.6	6	100	0	0	0	0	0	0	0	0	4	2.9	4	100	0	0	1	0.7	1	100	43	30.7	97	69.3	140	
Provost	18	22.5	40	50	58	100	6	7.5	11	13.8	17	100	0	0	1	1.3	1	100	1	1.3	1	1.3	2	100	1	1.3	1	1.3	2	100	26	32.5	54	67.5	80	
VC Advancement	16	23.9	42	62.7	58	100	0	0	7	10.4	7	100	0	0	0	0	0	0	0	0	1	1.5	1	100	0	0	1	1.5	1	100	16	23.9	51	76.1	67	
VC Fin & Admin	2	50	1	25	3	100	1	25	0	0	1	100	0	0	0	0	0	0	0	0	0	0	0	0	0	0	0	0	0	0	3	75	1	25	4	
VC Research & Econ Dev	83	32.2	120	46.5	203	100	7	2.7	19	7.4	26	100	1	0.4	1	0.4	2	100	12	4.7	8	3.1	20	100	3	1.2	4	1.6	7	100	106	41.1	152	58.9	258	
VC Student Affairs	39	39.4	40	40.4	79	100	3	3	9	9.1	12	100	0	0	0	0	0	0	1	1	3	3	4	100	3	3	1	1	4	100	46	46.5	53	53.5	99	
VC for Engagement	0	0	4	100	4	100	0	0	0	0	0	0	0	0	0	0	0	0	0	0	0	0	0	0	0	0	0	0	0	0	0	4	100	4		
Total	350	36.9	429	45.3	779	100	35	3.7	70	7.4	105	100	2	0.2	4	0.4	6	100	21	2.2	21	2.2	42	100	8	0.8	8	0.8	16	100	416	43.9	532	56.1	948	

Source: Institutional Research PNSP003

Chart 53

**EPA PERSONNEL
MINORITY AND FEMALE PRESENCE REPORT (PNSP003)
SUMMARY OF EPA NON-FACULTY TITLE MODIFIER BY SCHOOL
AS OF SEP 2008**

SAAO - Tier 1 (A)												
SCHOOL	White				African-American		ALL				Total N	
	Male		Female		Female		Male		Female			
	N	%	N	%	N	%	N	%	N	%		
Arts & Sciences	1	100	0	0	0	0	0	1	100	0	0	1
CIO	1	100	0	0	0	0	0	1	100	0	0	1
Chancellor	1	50	1	50	0	0	0	1	50	1	50	2
Grad School	1	100	0	0	0	0	0	1	100	0	0	1
Provost	0	0	0	0	1	100	0	0	0	1	100	1
Sch Business	1	100	0	0	0	0	0	1	100	0	0	1
Sch Dentistry	1	100	0	0	0	0	0	1	100	0	0	1
Sch Education	0	0	1	100	0	0	0	0	0	1	100	1
Sch Govt	1	100	0	0	0	0	0	1	100	0	0	1
Sch Info & Lib	0	0	1	100	0	0	0	0	0	1	100	1
Sch Journalism	0	0	2	100	0	0	0	0	0	2	100	2
Sch Law	1	100	0	0	0	0	0	1	100	0	0	1
Sch Nursing	0	0	1	100	0	0	0	0	0	1	100	1
Sch Pharmacy	1	100	0	0	0	0	0	1	100	0	0	1
Sch Pub Hlth	0	0	1	100	0	0	0	0	0	1	100	1
VC Advancement	1	100	0	0	0	0	0	1	100	0	0	1
VC Fin & Admin	1	100	0	0	0	0	0	1	100	0	0	1
VC Research & Econ Dev	1	100	0	0	0	0	0	1	100	0	0	1
VC Student Affairs	0	0	1	100	0	0	0	0	0	1	100	1
Total	12	57	8	38	1	4.8	12	57	9	42.9	21	

Chart 54
THE UNIVERSITY OF NORTH CAROLINA AT CHAPEL HILL
EPA PERSONNEL
MINORITY AND FEMALE PRESENCE REPORT (PNSP003)
SUMMARY OF EPA NON-FACULTY TITLE MODIFIER BY SCHOOL
AS OF SEP 2008

SAAO - Tier 2 (B)																					
SCHOOL	White				African-American				American Indian		Asian				Hispanic		ALL				Total N
	Male		Female		Male		Female		Male		Male		Female		Female		Male		Female		
	N	%	N	%	N	%	N	%	N	%	N	%	N	%	N	%	N	%	N	%	
Arts & Sciences	5	20.8	13	54.2	2	8.3	2	8.3	1	4.2	0	0	1	4.2	0	0	8	33.3	16	66.7	24
Assoc VC Camp Svc	9	69.2	2	15.4	1	7.7	0	0	0	0	1	7.7	0	0	0	0	11	84.6	2	15.4	13
Assoc VC Fac Plan & Const	2	50	1	25	0	0	0	0	0	0	0	1	25	0	0	2	50	2	50	4	4
Assoc VC Fin	4	40	5	50	0	0	0	0	0	0	0	1	10	0	0	4	40	6	60	10	10
Assoc VC HR	5	55.6	3	33.3	0	0	1	11.1	0	0	0	0	0	0	0	0	5	55.6	4	44.4	9
Athletics	11	64.7	4	23.4	1	5.9	1	5.9	0	0	0	0	0	0	0	0	12	70.6	5	29.4	17
CIO	7	58.3	5	41.7	0	0	0	0	0	0	0	0	0	0	0	0	7	58.3	5	41.7	12
Chancellor	5	38.5	6	46.2	1	7.7	1	7.7	0	0	0	0	0	0	0	0	6	46.2	7	53.8	13
Cont Ed	3	37.5	3	37.5	0	0	2	25	0	0	0	0	0	0	0	0	3	37.5	5	62.5	8
Ctrs and Inst	2	33.3	4	66.7	0	0	0	0	0	0	0	0	0	0	0	0	2	33.3	4	66.7	6
Grad School	0	0	4	100	0	0	0	0	0	0	0	0	0	0	0	0	0	0	4	100	4
Libraries	0	0	3	100	0	0	0	0	0	0	0	0	0	0	0	0	0	0	3	100	3
Provost	10	20.4	27	55.1	4	8.1	7	14.3	0	0	0	0	0	0	1	2	14	28.6	35	71.4	49
Sch Business	7	38.9	10	55.6	0	0	1	5.6	0	0	0	0	0	0	0	0	7	38.9	11	61.1	18
Sch Dentistry	2	66.7	1	33.3	0	0	0	0	0	0	0	0	0	0	0	0	2	66.7	1	33.3	3
Sch Education	0	0	1	50	1	50	0	0	0	0	0	0	0	0	0	0	1	50	1	50	2
Sch Govt	2	50	1	25	0	0	1	25	0	0	0	0	0	0	0	0	2	50	2	50	4
Sch Info & Lib	0	0	0	0	1	100	0	0	0	0	0	0	0	0	0	0	1	100	0	0	1
Sch Journalism	2	50	2	50	0	0	0	0	0	0	0	0	0	0	0	0	2	50	2	50	4
Sch Law	4	26.7	9	60	1	6.7	0	0	0	0	0	0	0	0	1	6.7	5	33.3	10	66.7	15
Sch Medicine	17	34.7	30	61.2	1	2	1	2	0	0	0	0	0	0	0	0	18	36.7	31	63.3	49
Sch Nursing	0	0	3	100	0	0	0	0	0	0	0	0	0	0	0	0	0	0	3	100	3
Sch Pharmacy	1	33.3	0	0	0	0	0	0	0	0	1	33.3	1	33.3	0	0	2	66.7	1	33.3	3
Sch Pub Hlth	5	45.5	5	45.5	0	0	0	0	0	0	0	1	9.1	0	0	5	45.5	6	54.5	11	11
Sch Social Work	0	0	2	66.7	0	0	1	33.3	0	0	0	0	0	0	0	0	0	0	3	100	3
VC Advancement	6	14.6	30	73.2	0	0	4	9.8	0	0	0	0	0	0	1	2.4	6	14.6	35	85.4	41
VC Fin & Admin	1	33.3	1	33.3	1	33.3	0	0	0	0	0	0	0	0	0	0	2	66.7	1	33.3	3
VC Research & Econ Dev	9	90	1	10	0	0	0	0	0	0	0	0	0	0	0	0	9	90	1	10	10
VC Student Affairs	6	50	3	25	2	16.7	1	8.3	0	0	0	0	0	0	0	0	8	66.7	4	33.3	12
VC for Engagement	0	0	1	100	0	0	0	0	0	0	0	0	0	0	0	0	0	0	1	100	1
Total	125	35.2	180	50.7	16	4.5	23	6.5	1	0.3	2	0.6	5	1.4	3	0.9	144	40.6	211	59.4	355

Source: Institutional Research PNSP003 (Includes 8 Not Determined Employees)

Chart 55

THE UNIVERSITY OF NORTH CAROLINA AT CHAPEL HILL
EPA PERSONNEL
MINORITY AND FEMALE PRESENCE REPORT (PNSP003)
SUMMARY OF EPA NON-FACULTY TITLE MODIFIER BY SCHOOL
AS OF SEP 2008

Instructional (I)																									
SCHOOL	White				African-American				American Indian				Asian				Hispanic				ALL				Total
	Male		Female		Male		Female		Male		Female		Male		Female		Male		Female		Male		Female		N
	N	%	N	%	N	%	N	%	N	%	N	%	N	%	N	%	N	%	N	%	N	%	N	%	N
Arts & Sciences	19	27.1	38	54.3	3	4.3	4	5.7	0	0	0	0	1	1.4	2	2.9	1	1.4	2	2.9	24	34.3	46	65.7	70
Assoc VC Fac Plan & Const	1	100	0	0	0	0	0	0	0	0	0	0	0	0	0	0	0	0	0	0	0	0	0	0	1
Athletics	61	59.2	23	22.3	11	10.7	4	3.9	1	1	1	1	1	1	0	0	1	1	0	0	75	72.8	28	27.2	103
CIO	5	50	3	30	1	10	1	10	0	0	0	0	0	0	0	0	0	0	0	0	6	60	4	40	10
Cont Ed	3	50	3	50	0	0	0	0	0	0	0	0	0	0	0	0	0	0	0	0	3	50	3	50	6
Ctrs and Inst	8	32	12	48	0	0	4	16	0	0	1	4	0	0	0	0	0	0	0	0	8	32	17	68	25
Grad School	1	50	0	0	1	50	0	0	0	0	0	0	0	0	0	0	0	0	0	0	2	100	0	0	2
Libraries	42	30.7	84	61.3	1	0.7	5	3.6	0	0	0	0	0	0	4	2.9	0	0	1	0.7	43	31.4	94	68.6	137
Provost	7	28	10	40	2	8	3	12	0	0	1	4	1	4	0	0	1	4	0	0	11	44	14	56	25
Sch Business	16	39	19	46.3	1	2.4	4	9.8	0	0	0	0	0	0	1	2.4	0	0	0	0	17	41.5	24	58.5	41
Sch Dentistry	2	50	2	50	0	0	0	0	0	0	0	0	0	0	0	0	0	0	0	0	2	50	2	50	4
Sch Education	2	15.4	5	38.5	0	0	4	30.8	0	0	0	0	0	0	0	0	0	0	2	15.4	2	15.4	11	84.6	13
Sch Govt	2	25	6	75	0	0	0	0	0	0	0	0	0	0	0	0	0	0	0	0	2	25	6	75	8
Sch Info & Lib	2	40	2	40	0	0	1	20	0	0	0	0	0	0	0	0	0	0	0	0	2	40	3	60	5
Sch Journalism	4	50	3	37.5	0	0	1	12.5	0	0	0	0	0	0	0	0	0	0	0	0	4	50	4	50	8
Sch Law	3	30	5	50	0	0	1	10	0	0	1	10	0	0	0	0	0	0	0	0	3	30	7	70	10
Sch Medicine	11	29.7	24	64.9	0	0	1	2.7	0	0	0	0	0	0	1	2.7	0	0	0	0	11	29.7	26	70.3	37
Sch Nursing	0	0	2	100	0	0	0	0	0	0	0	0	0	0	0	0	0	0	0	0	0	0	2	100	2
Sch Pub Hlth	9	31	19	65.5	0	0	1	3.4	0	0	0	0	0	0	0	0	0	0	0	0	9	31	20	69	29
Sch Social Work	0	0	2	100	0	0	0	0	0	0	0	0	0	0	0	0	0	0	0	0	0	0	2	100	2
VC Advancement	7	38.9	9	50	0	0	2	11.1	0	0	0	0	0	0	0	0	0	0	0	0	7	38.9	11	61.1	18
VC Research & Econ Dev	1	7.7	8	61.5	0	0	3	23	0	0	0	0	1	7.7	0	0	0	0	0	0	2	15.4	11	84.6	13
VC Student Affairs	33	38.4	36	41.9	1	1.2	8	9.3	0	0	0	0	1	1.2	3	3.5	3	3.5	1	1.2	38	44.2	48	55.8	86
VC for Engagement	0	0	3	100	0	0	0	0	0	0	0	0	0	0	0	0	0	0	0	0	0	0	3	100	3
Total	239	36.3	318	48.3	21	3.2	47	7.1	1	0.2	4	0.6	5	0.8	11	1.7	6	0.9	6	0.9	272	41.3	386	58.7	658

Source: Institutional Research PNSP003 (Includes 1 Not Determined Employee)

Chart 56
THE UNIVERSITY OF NORTH CAROLINA AT CHAPEL HILL
EPA PERSONNEL
MINORITY AND FEMALE PRESENCE REPORT (PNSP003)
SUMMARY OF EPA NON-FACULTY TITLE MODIFIER BY SCHOOL
AS OF SEP 2008

Research (R)																										
SCHOOL	White				African-American				American Indian				Asian				Hispanic				ALL				Total	
	Male		Female		Male		Female		Male		Female		Male		Female		Male		Female		Male		Female			
	N	%	N	%	N	%	N	%	N	%	N	%	N	%	N	%	N	%	N	%	N	%	N	%		
Arts & Sciences	26	63.4	7	17.1	1	2.4	0	0	0	0	0	0	0	6	14.6	1	2.4	0	0	0	0	33	80.5	8	19.5	41
Assoc VC Camp Svc	3	100	0	0	0	0	0	0	0	0	0	0	0	0	0	0	0	0	0	0	0	3	100	0	0	3
CIO	2	40	1	20	0	0	0	0	0	0	0	0	0	2	40	0	0	0	0	0	0	4	80	1	20	5
Chancellor	0	0	3	100	0	0	0	0	0	0	0	0	0	0	0	0	0	0	0	0	0	0	0	3	100	3
Ctrs and Inst	15	39.5	12	31.6	1	2.6	5	13.1	0	0	0	0	0	3	7.9	2	5.3	0	0	0	0	19	50	19	50	38
Provost	1	20	3	60	0	0	0	0	0	0	0	0	0	0	0	1	20	0	0	0	0	1	20	4	80	5
Sch Business	4	50	2	25	1	12.5	0	0	0	0	0	0	0	0	0	0	0	0	0	1	12.5	5	62.5	3	37.5	8
Sch Dentistry	0	0	2	40	0	0	1	20	0	0	0	0	0	1	20	1	20	0	0	0	0	1	20	4	80	5
Sch Education	1	25	3	75	0	0	0	0	0	0	0	0	0	0	0	0	0	0	0	0	0	1	25	3	75	4
Sch Govt	3	37.5	3	37.5	0	0	0	0	0	0	0	0	0	1	12.5	1	12.5	0	0	0	0	4	50	4	50	8
Sch Info & Lib	0	0	1	100	0	0	0	0	0	0	0	0	0	0	0	0	0	0	0	0	0	0	0	1	100	1
Sch Journalism	0	0	1	100	0	0	0	0	0	0	0	0	0	0	0	0	0	0	0	0	0	0	0	1	100	1
Sch Law	0	0	0	0	0	0	1	100	0	0	0	0	0	0	0	0	0	0	0	0	0	0	0	1	100	1
Sch Medicine	50	22	91	40.1	2	0.9	9	4	0	0	0	0	0	41	18.1	27	11.9	3	1.3	4	1.8	96	42.3	131	57.7	227
Sch Nursing	1	11.1	5	55.6	0	0	2	22.2	0	0	0	0	0	0	0	0	0	0	0	1	11.1	1	11.1	8	88.9	9
Sch Pharmacy	3	25	6	50	0	0	1	8.3	0	0	0	0	0	0	0	1	8.3	1	8.3	0	0	4	33.3	8	66.7	12
Sch Pub Hlth	14	22.6	41	66.1	0	0	2	3.2	0	0	0	0	0	0	0	3	4.8	1	1.6	1	1.6	15	24.2	47	75.8	62
Sch Social Work	2	100	0	0	0	0	0	0	0	0	0	0	0	0	0	0	0	0	0	0	0	2	100	0	0	2
VC Advancement	2	28.6	3	42.9	0	0	1	14.3	0	0	0	0	0	0	0	1	14.3	0	0	0	0	2	28.6	5	71.4	7
VC Research & Econ Dev	72	30.8	111	47.4	7	3	16	6.8	1	0.4	1	0.4	11	4.7	8	3.4	3	1.3	4	1.7	94	40.2	140	59.8	234	
Total	199	29.4	295	43.6	12	1.8	38	5.6	1	0.1	1	0.1	65	9.6	46	6.8	8	1.2	11	1.6	285	42.2	391	57.8	676	

Source: Institutional Research PNSP003 (Includes 3 Not Determined Employees)