

SPECIAL POINTS OF INTEREST

- NC-MSEN Program
- P.E.R.S.I.S.T.

IMPORTANT FALL DATES

NC-MSEN	Sept. 19
Opt. Edu Day	Oct. 2
NC-MSEN	Oct. 3
NC-MSEN	Oct. 17
NC-MSEN	Nov. 21
NC-MSEN 25th Celebration	Dec. 12

Fall Enrollment

Fall enrollment for the WSSU NC-MSEN program began August 15, 2009. We currently have 105 students signed up to participate in the NC-MSEN Program this fall. We are encouraged by the diversity the program is showing this year through recruitment. We have a number of Hispanic Americans that have applied and been accepted to participate this year. From the enrollment numbers and quality of the students, this has the potential to be our best year yet.

Summer Internships

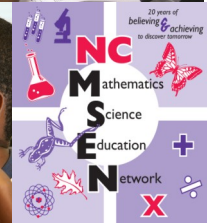
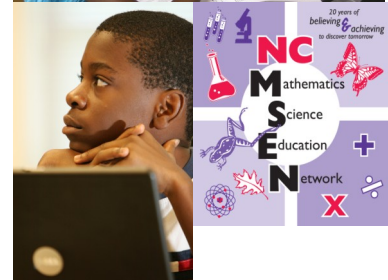
The NC-MSEN program had 2 students participate in summer internships this past summer. These students volunteered their summer to gain a learning experience that was most valuable to them. Eden Tackett interned at NC State University as a student in the SCRIBLS Program. While in the program she took college level biology and was able to get college credit for this class.

Maryel Simmons also attended the SCRIBLS Program at NC State University. Both students describe the experience as life changing. The students were able to get a taste of what college life would really be like. The students were engaged in rigorous work and enjoyed the educational experience.

WSSU CMSTE Summer Scholars Program Summer 2009

The WSSU NC-MSEN program was a success this past summer. The program ran June 22– July 2, 2009. We had 87 students to participate in the summer program. The programs consisted of several components that students enjoyed daily.

The summer scholar students participated in classes that ran daily from 8:00am until 5:00pm. These classes included math, science, English and career development. After the conclusion of the summer program, students traveled to Carowinds Amusement Park, in Charlotte, NC.





**WSSU NC-MSEN OFFICE
STAFF**

Director
of NC-MSENDr. Vincent T. Snipes

Pre-College
Coordinator.....Peter M. Eley

Program Assistant.....Vivian E. Kelly

**WINSTON-SALEM STATE
UNIVERSITY**

North Carolina MSEN Pre-College Program

Suite 112

Carolina Hall - WSSU

Phone: (336)-750-2995

Fax:(336)-750-3076

E-mail:eleypm@wssu.edu

Promoting Excellence in Mathematics and Science Education

**We're on the Web at
<http://www.wssu.edu/ncmsen>**

NC-MSEN 25th Anniversary Celebration

On December 12, 2009 the WSSU NC-MSEN Program will celebrate the 25th Anniversary of the MSEN program. The celebration will take place at the Hawthorne Inn at 10 am. This will be a special event where former NC-MSEN students and teacher participants will speak about their experiences and how the NC-MSEN program has helped them.

This program will also highlight the accomplishments of the NC-MSEN program and how it continues to serve students in the area of science and mathematics. Lunch will be catered by the Hawthorne Inn Hotel. Musical selections will be rendered by the WSSU JAZZ Ensemble. This event will be open to all current NC-MSEN students and one accompanying parent. If you plan to attend this event you must R.V.S.P. by Dec. 1, 2009. If you do not R.V.S.P. you will not be allowed to attend the event.

Please note this will be a very nice event and business attire is required. We look forward to this upcoming celebration. See you there!



Recipient of the 2009 SMT Partnership Award
NC Science, Mathematics and Technology Education Center
Burroughs Wellcome Fund

Go to WSSU.edu for more information