

# Measures of Excellence

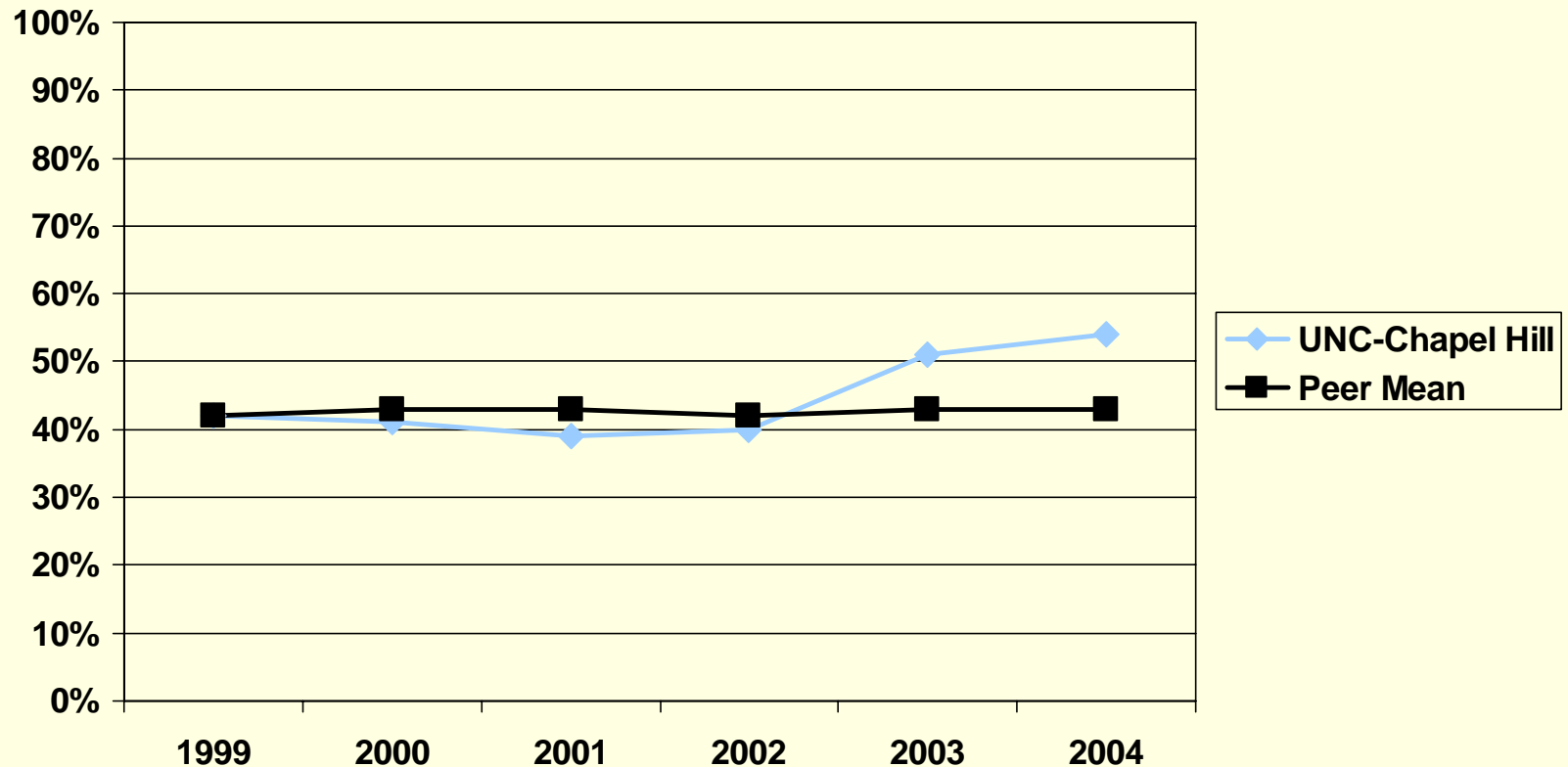
Robert N. Shelton  
Executive Vice Chancellor and Provost

The University of North Carolina at Chapel Hill  
November 17, 2005



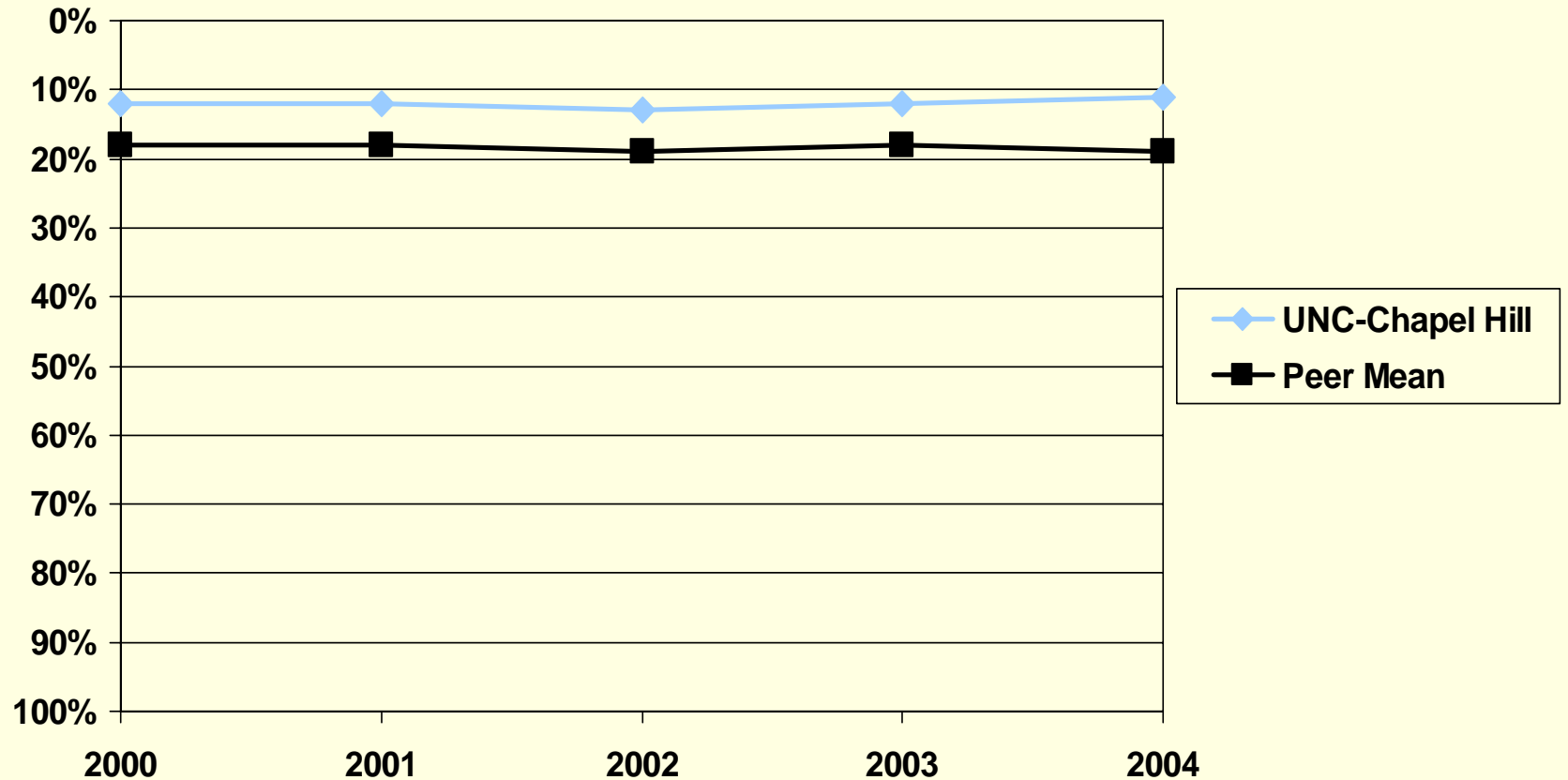
# Undergraduate Education

# Percentage of Course Sections with an Enrollment of Fewer than 20

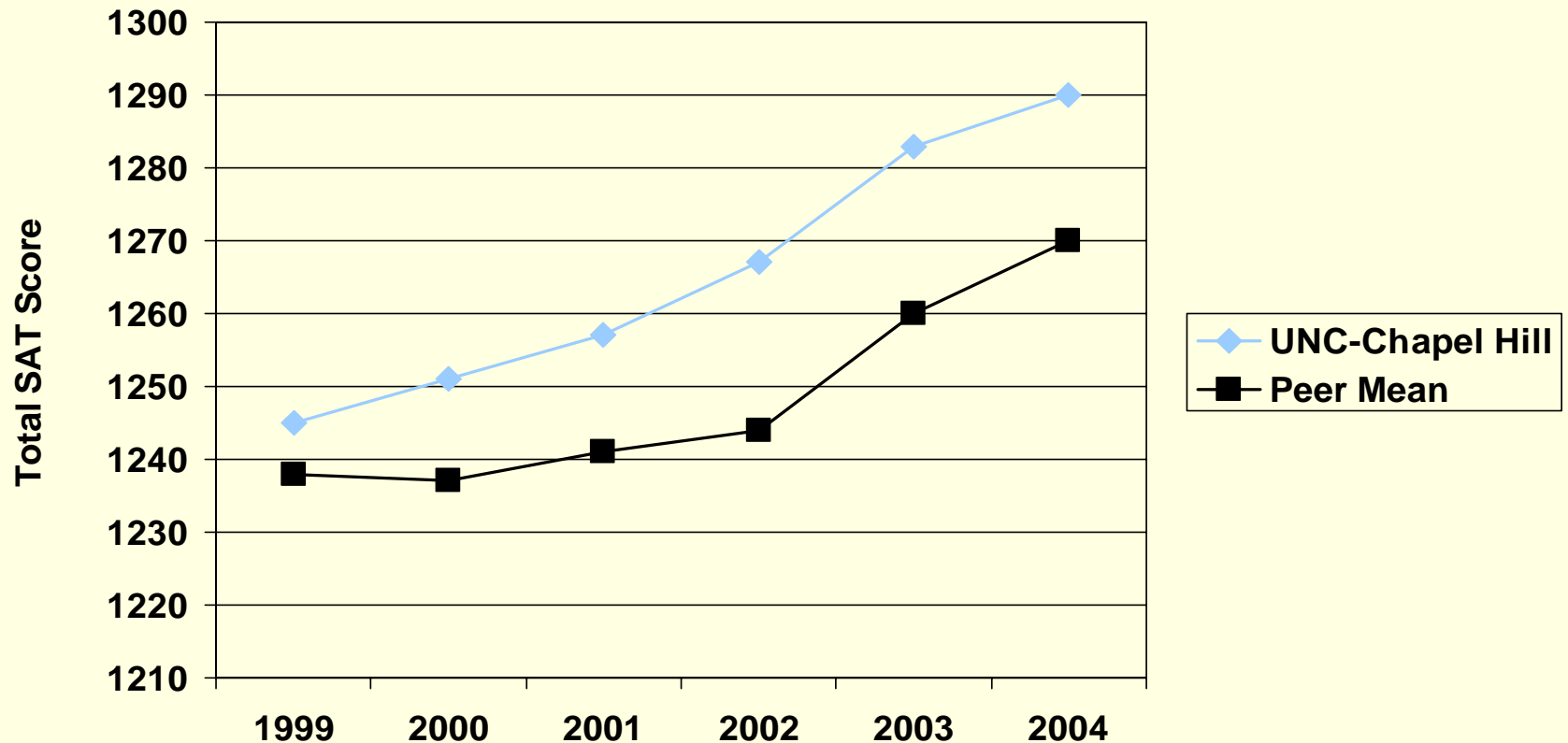


Source: 1999 and 2000, AAUDE summary report of the U.S. News & World Report America's Best Colleges ranking indicator data, as published by U.S. News & World Report in their America's Best Colleges 1997-2005 Editions; 2001-2004 U.S. News & World Report America's Best Colleges Editions 2003-2006. "Peer Mean" includes the ten public peers for Carolina.

# Percentage of Course Sections with an Enrollment of 50 or More



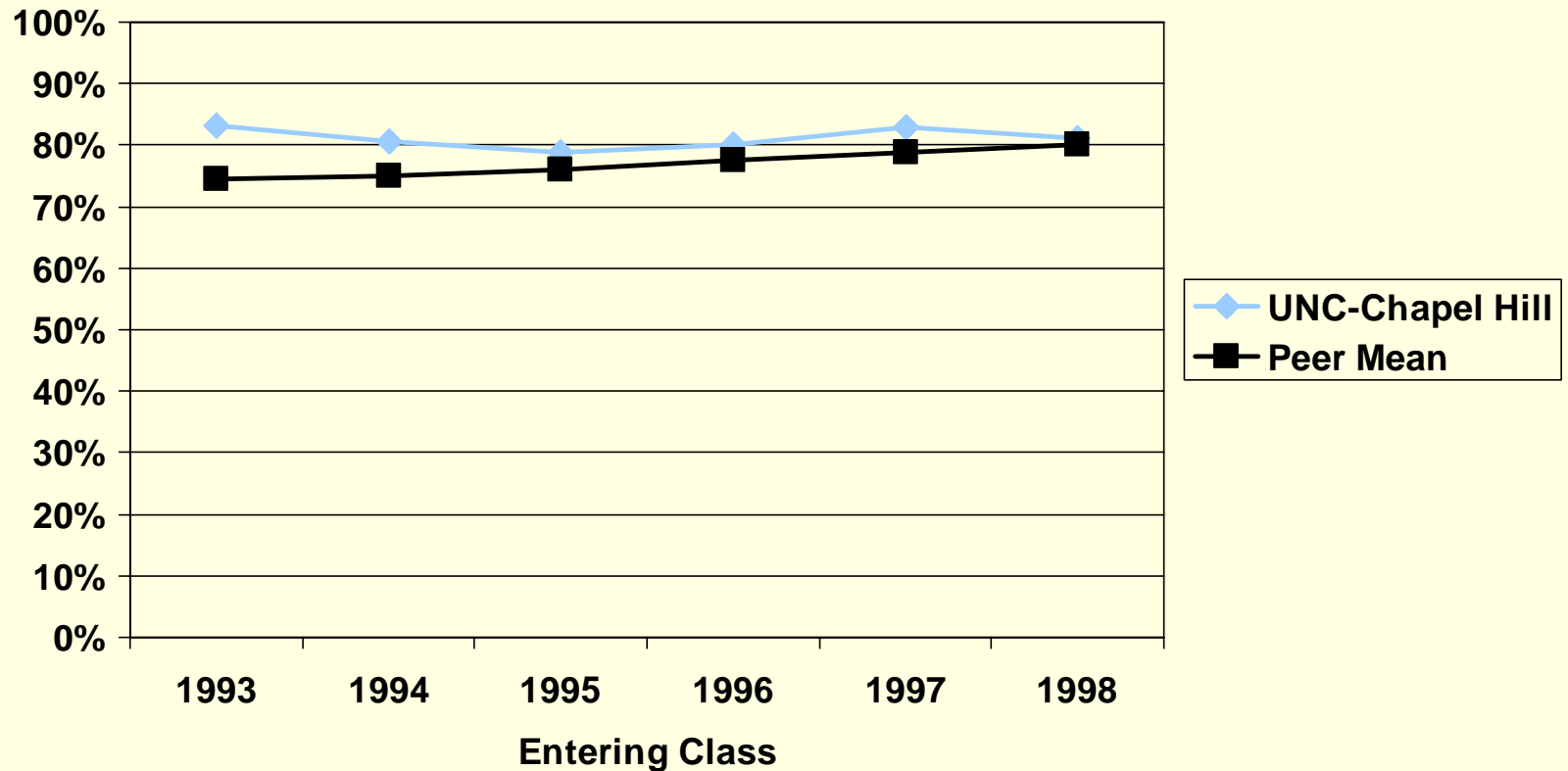
# SAT Scores of Entering Freshmen



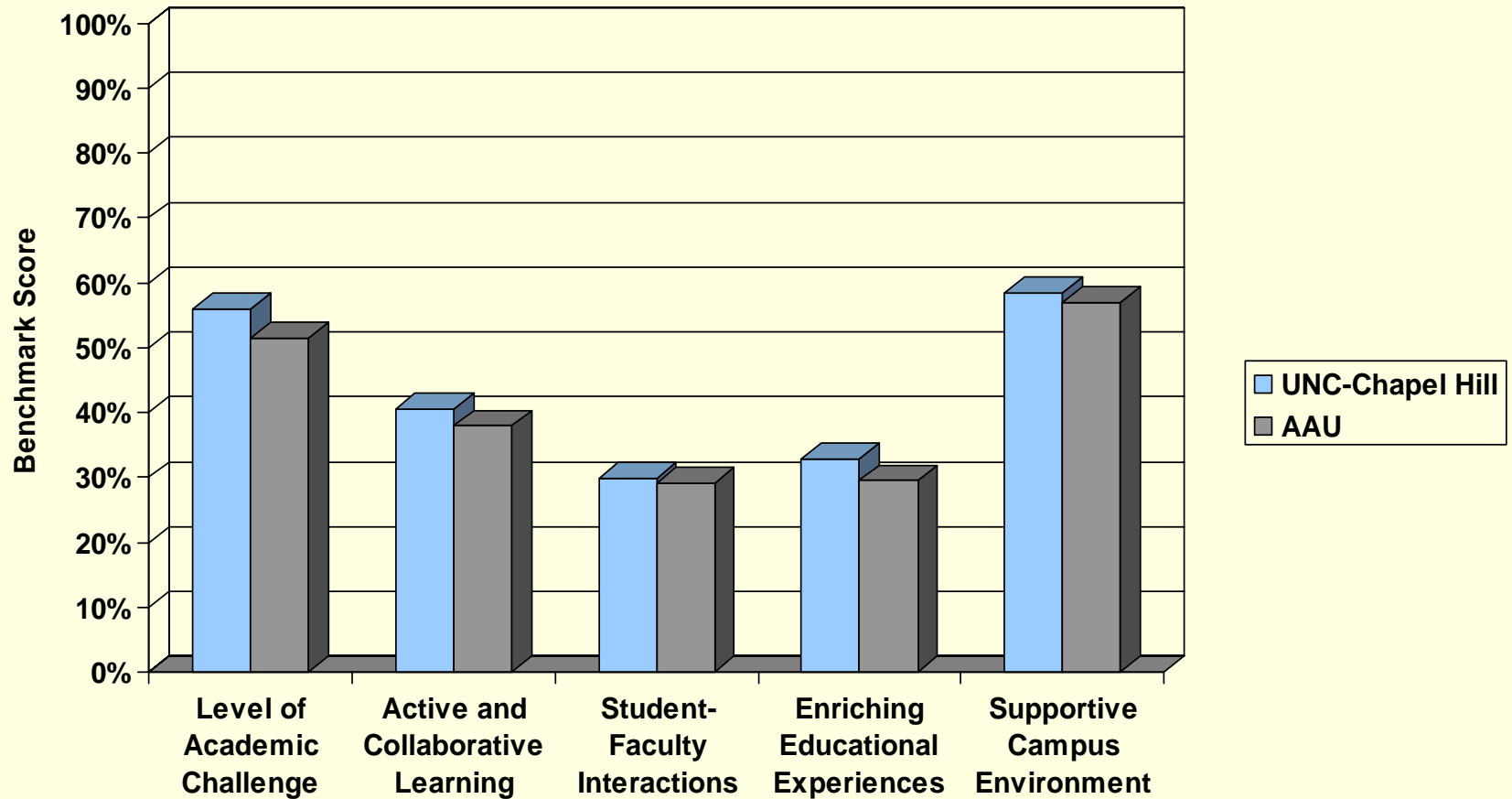
Note: Scores represent the midpoint of the 25<sup>th</sup> and 75<sup>th</sup> percentiles

Sources: 1999 through 2003: AAUDE Student Retention Report, June 2004, published by the Center for Institutional Data Exchange and Analysis at The University of Oklahoma Norman Campus; 2003 scores were taken from the 2003 AAUDE Freshman Profile Report, except for Illinois, which was taken from their Common Data Set. All scores for Ohio State (except 2003 and 2004) were taken from their Office of Enrollment Management web site, [http://www-afa.adm.ohio-state.edu/oem/docs/NFQF\\_Au03\\_15thDay\\_v2.pdf](http://www-afa.adm.ohio-state.edu/oem/docs/NFQF_Au03_15thDay_v2.pdf) (Enrollments 1995-2003 report). 2004: AAUDE Data Warehouse, Freshman Profile Data, except UCLA, Illinois, Virginia, and Washington come from 2004-2005 Common Data Set from institutions web sites

# Six-Year Graduation Rates

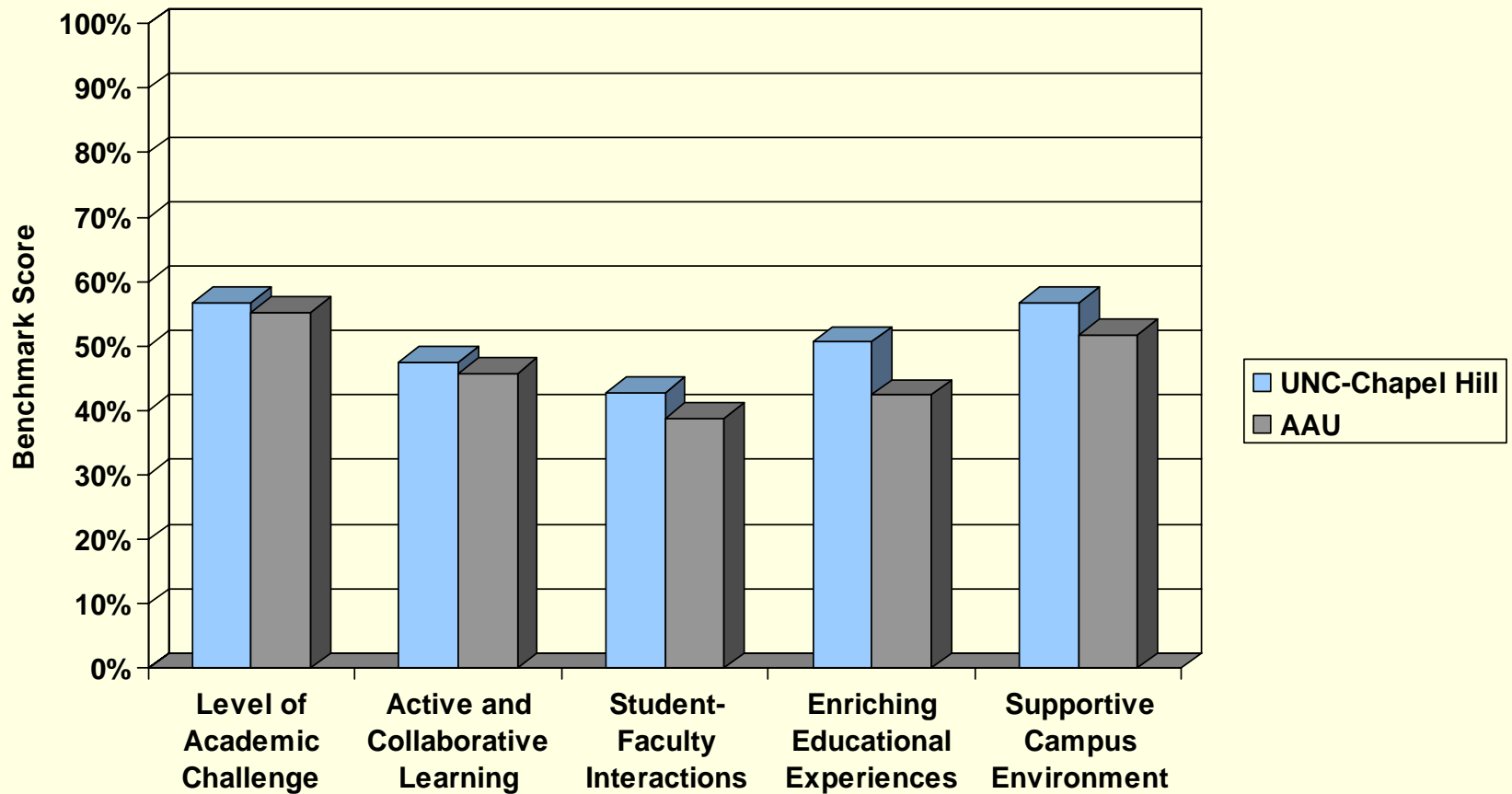


# Freshmen Academic Engagement Indicators 2005

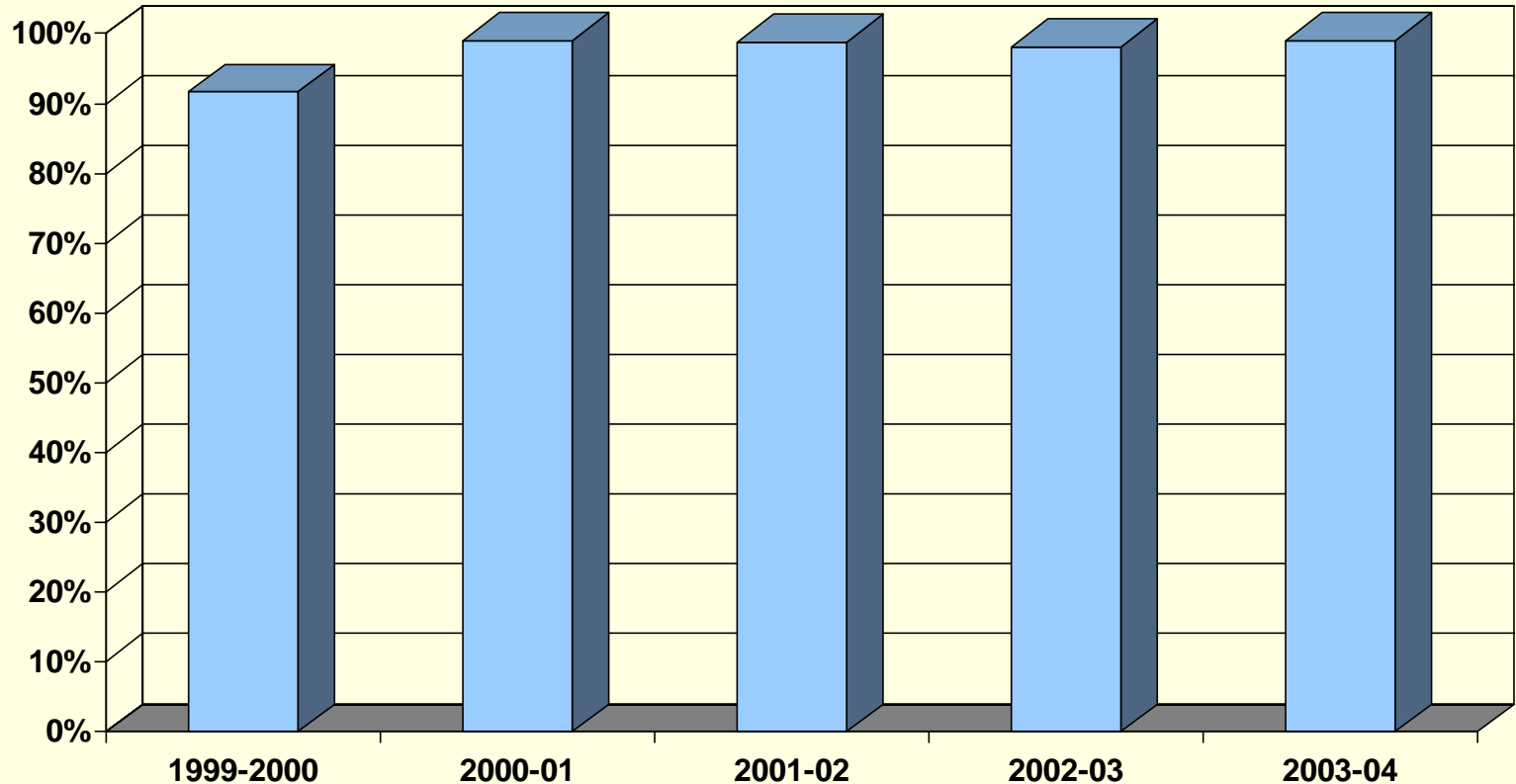


Source: National Survey of Student Engagement 2005. "AAU" means schools that participated in NSSE 2005, but does not include all of our peers.

# Senior Academic Engagement Indicators 2005



# UNC-Chapel Hill Proportion of Undergraduate Financial Aid Applicants from the Lowest Family Income Quartile Who Received Financial Aid \*



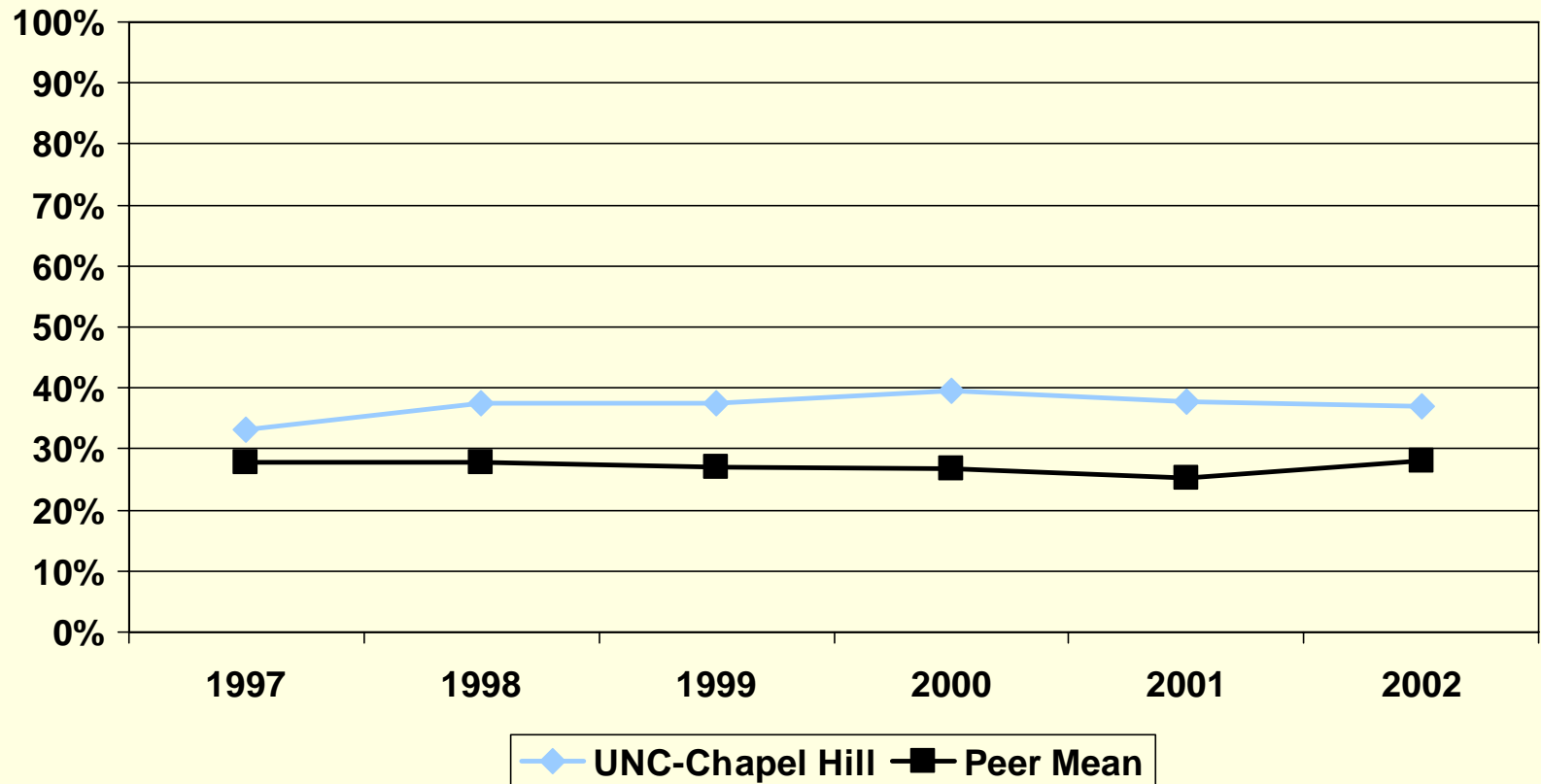
\*Excluding PLUS, unsubsidized, and private loans

Source: Office of Scholarships and Student Aid

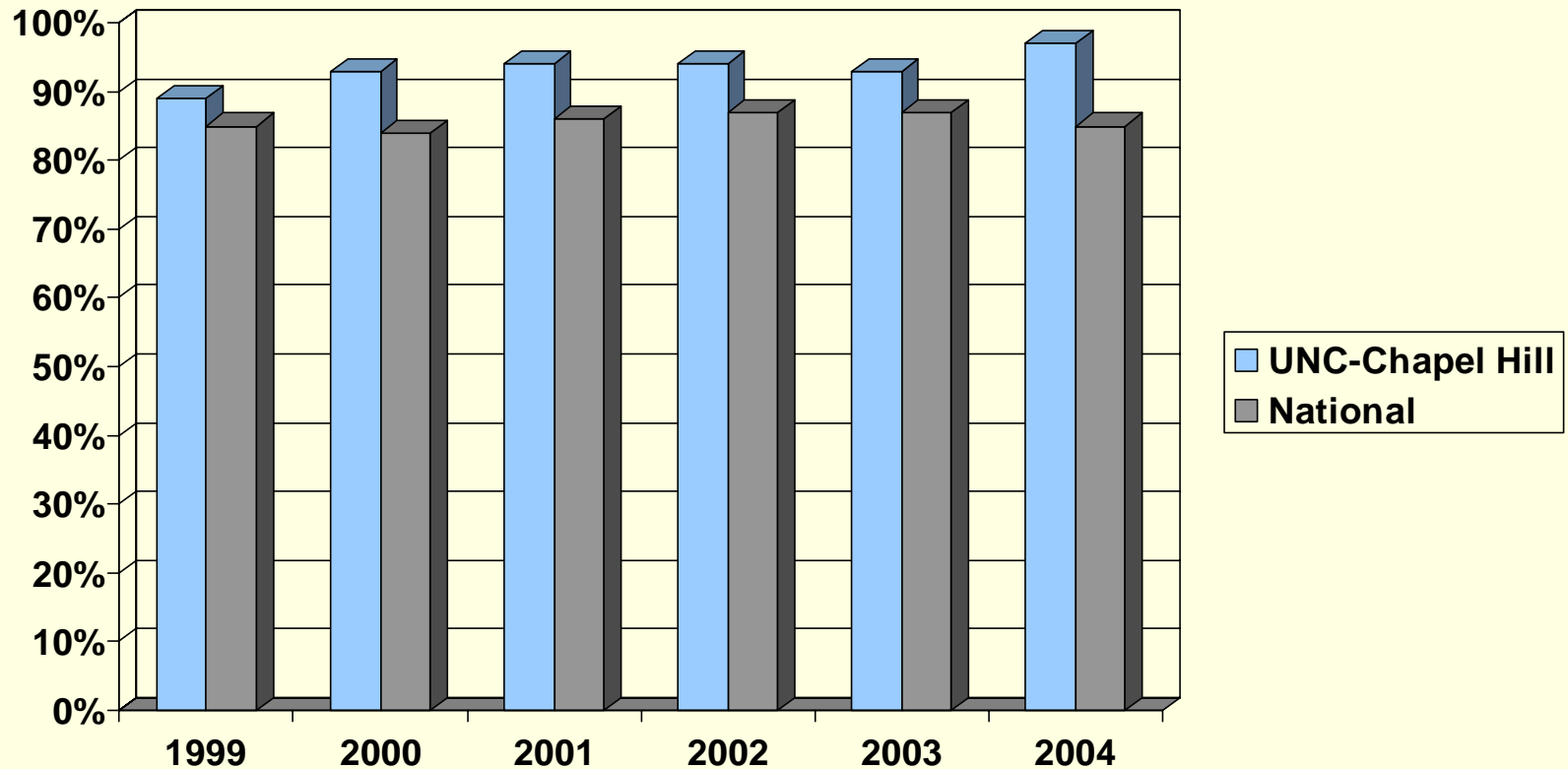


# Graduate & Professional Education

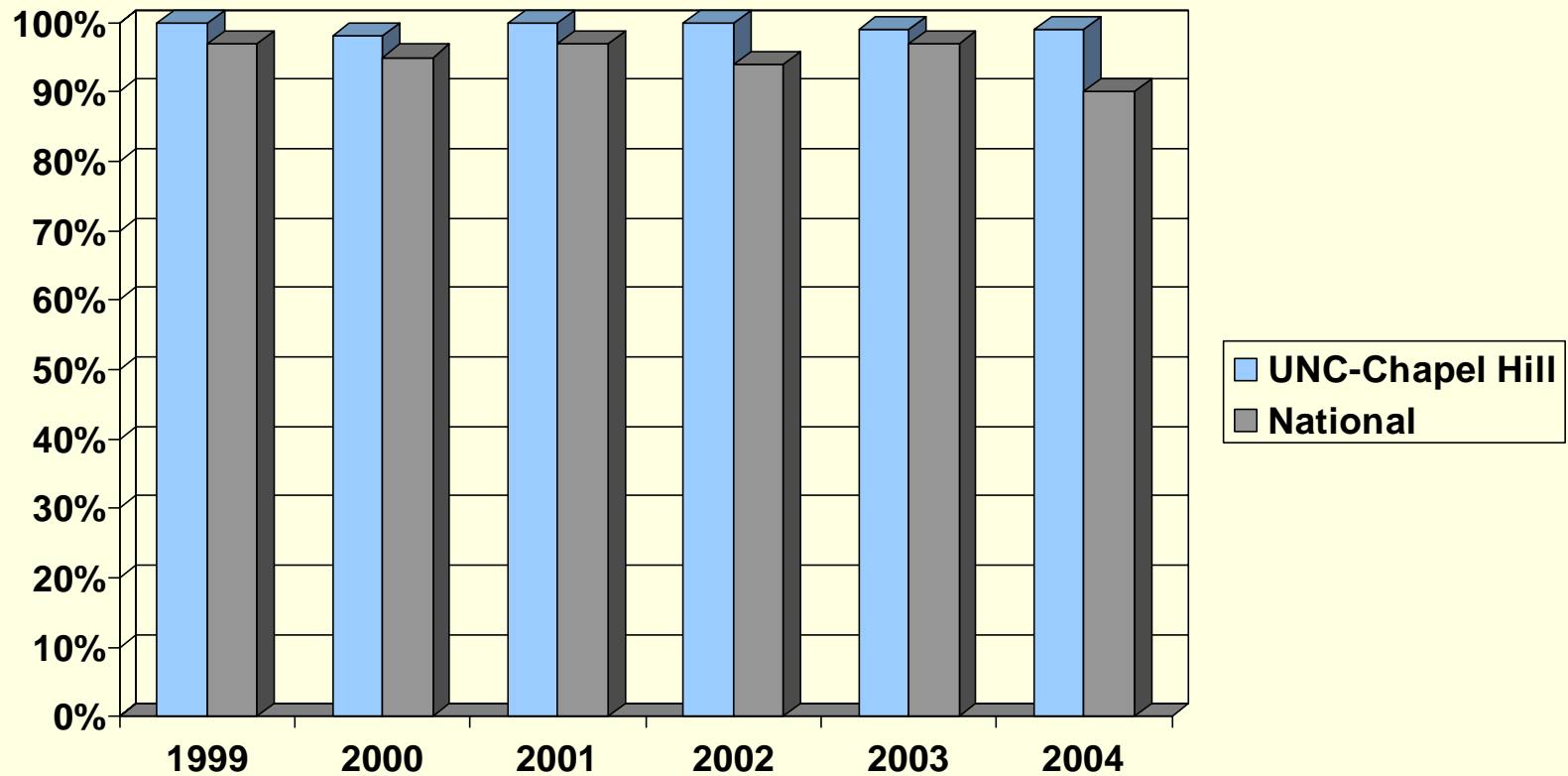
# Full-Time Science and Engineering Graduate Students Receiving Primary Support from Federal Sources



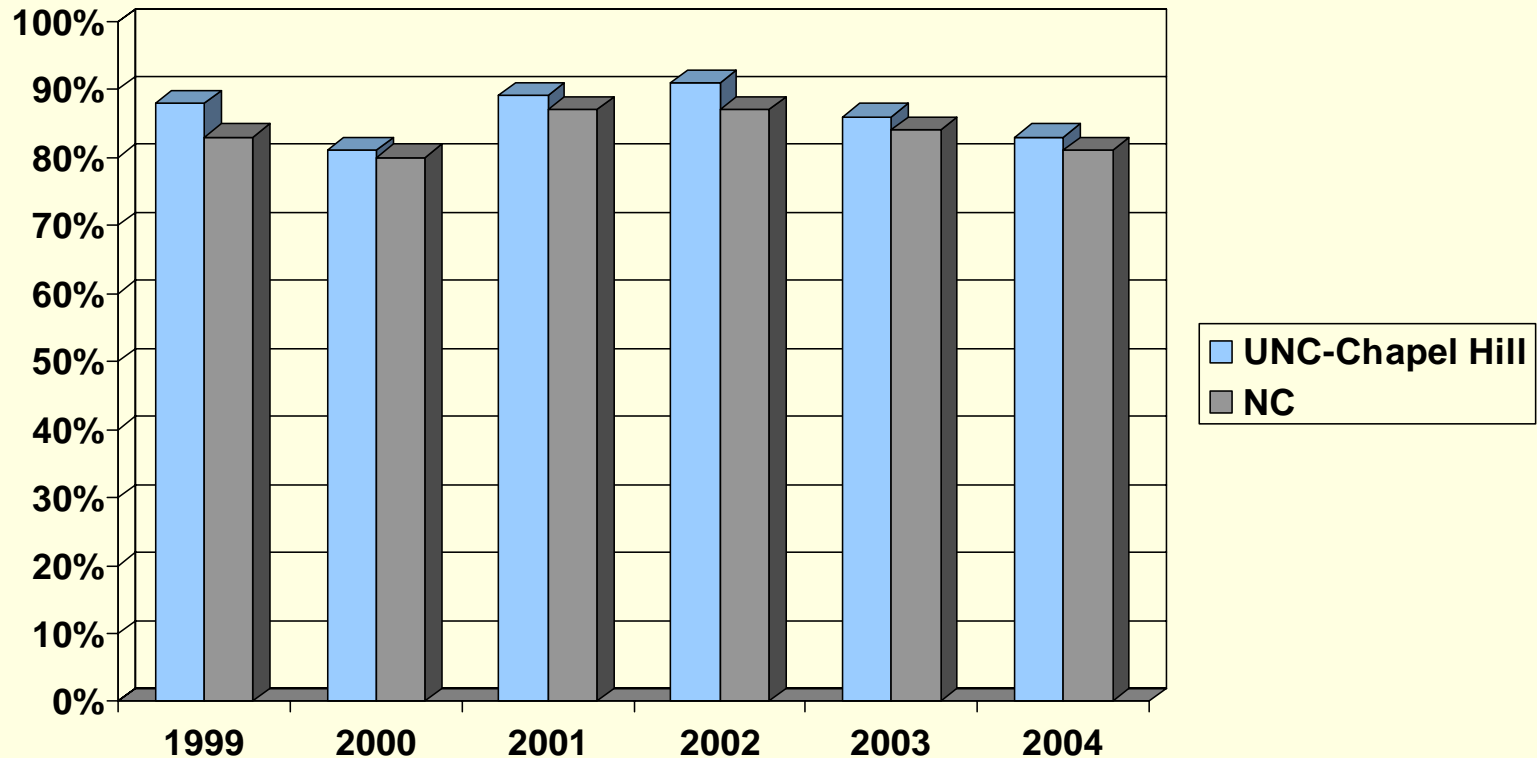
# Passing Rates for National Council Licensure Examination for Registered Nurses

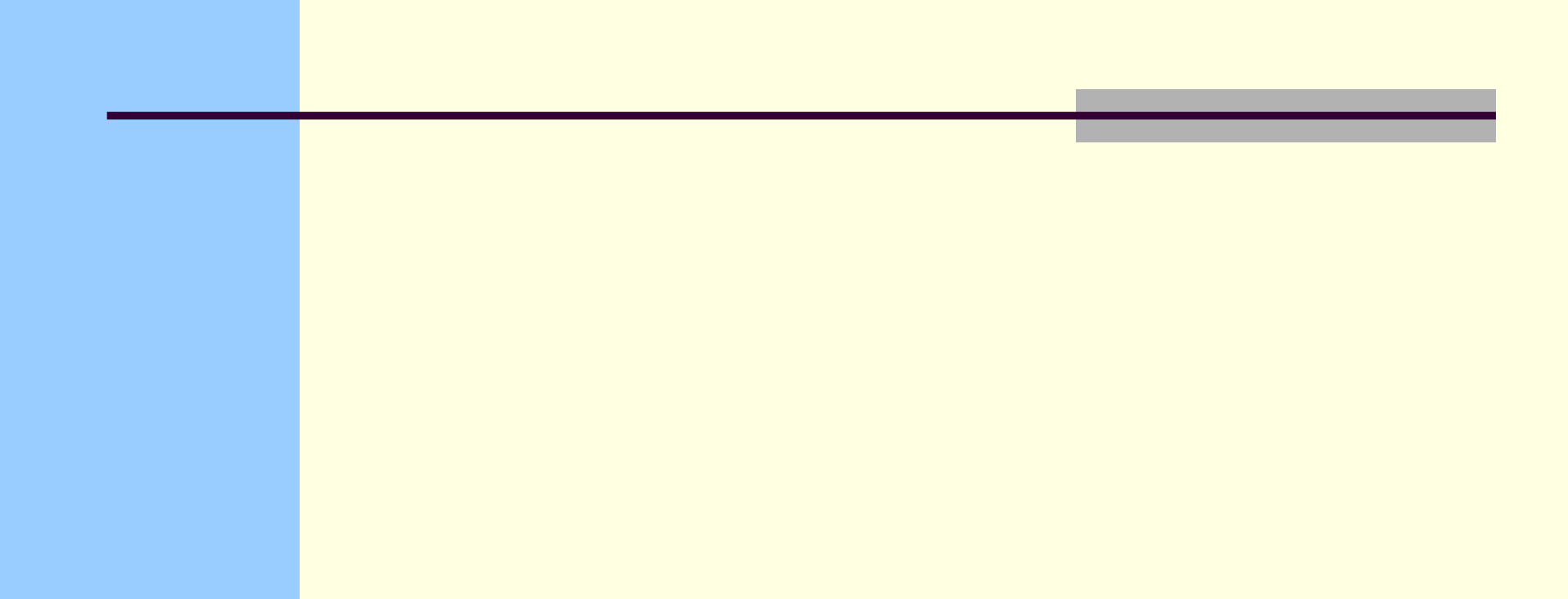


# Passing Rates for North American Pharmacy Licensure Examination



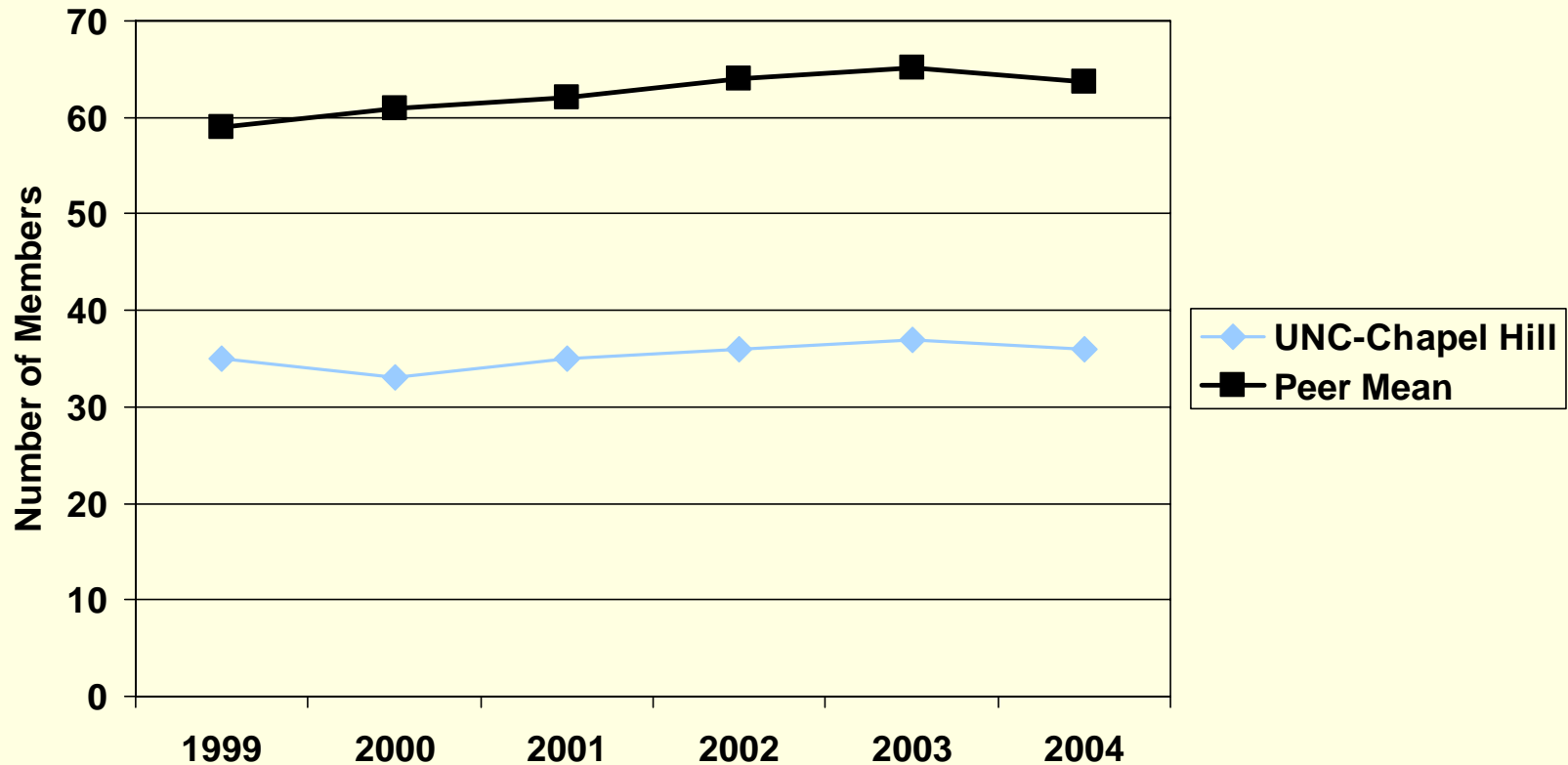
# Passing Rates for First-Time Writers Law Bar Exam





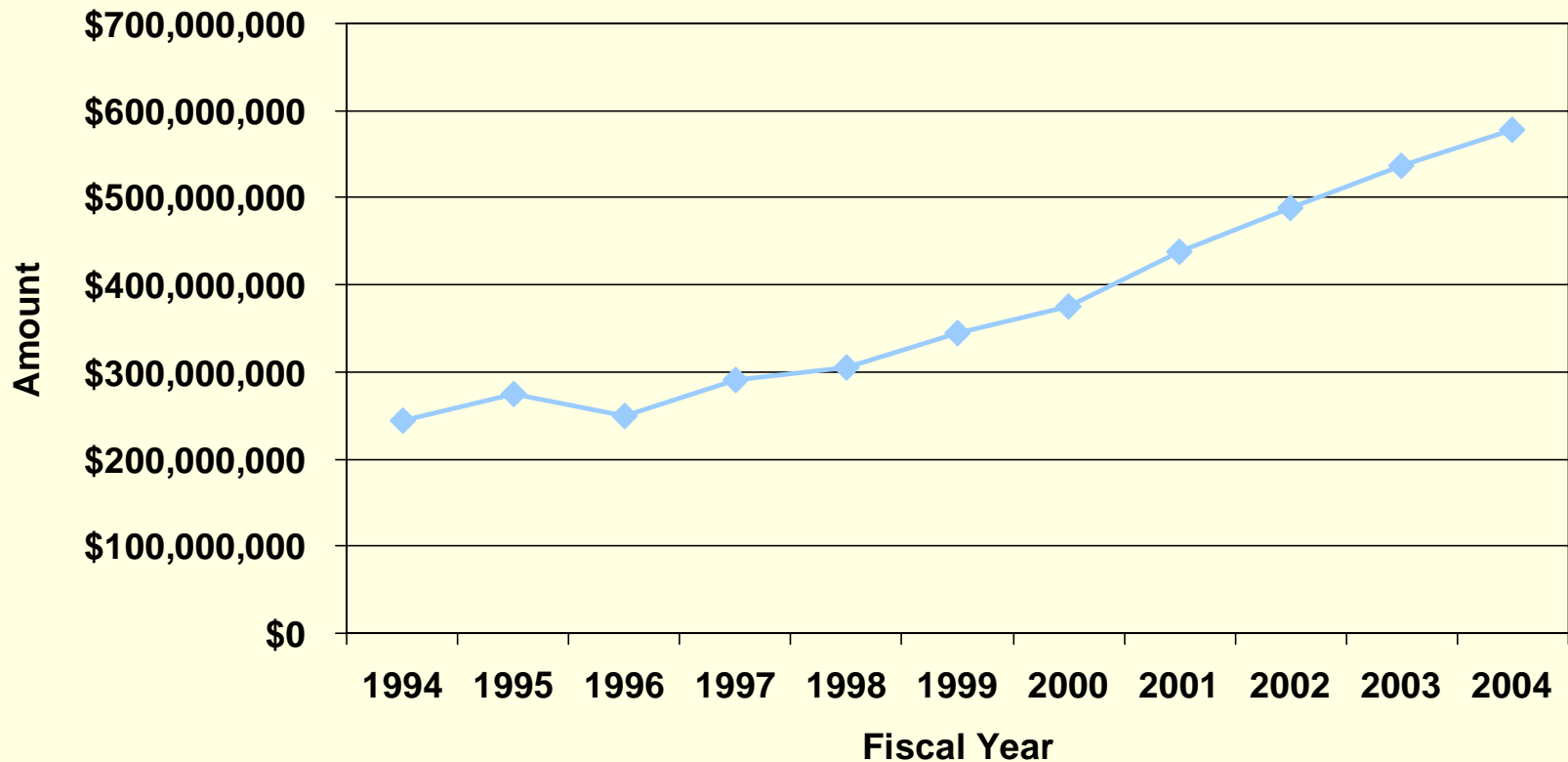
Faculty

# Membership in National Academies



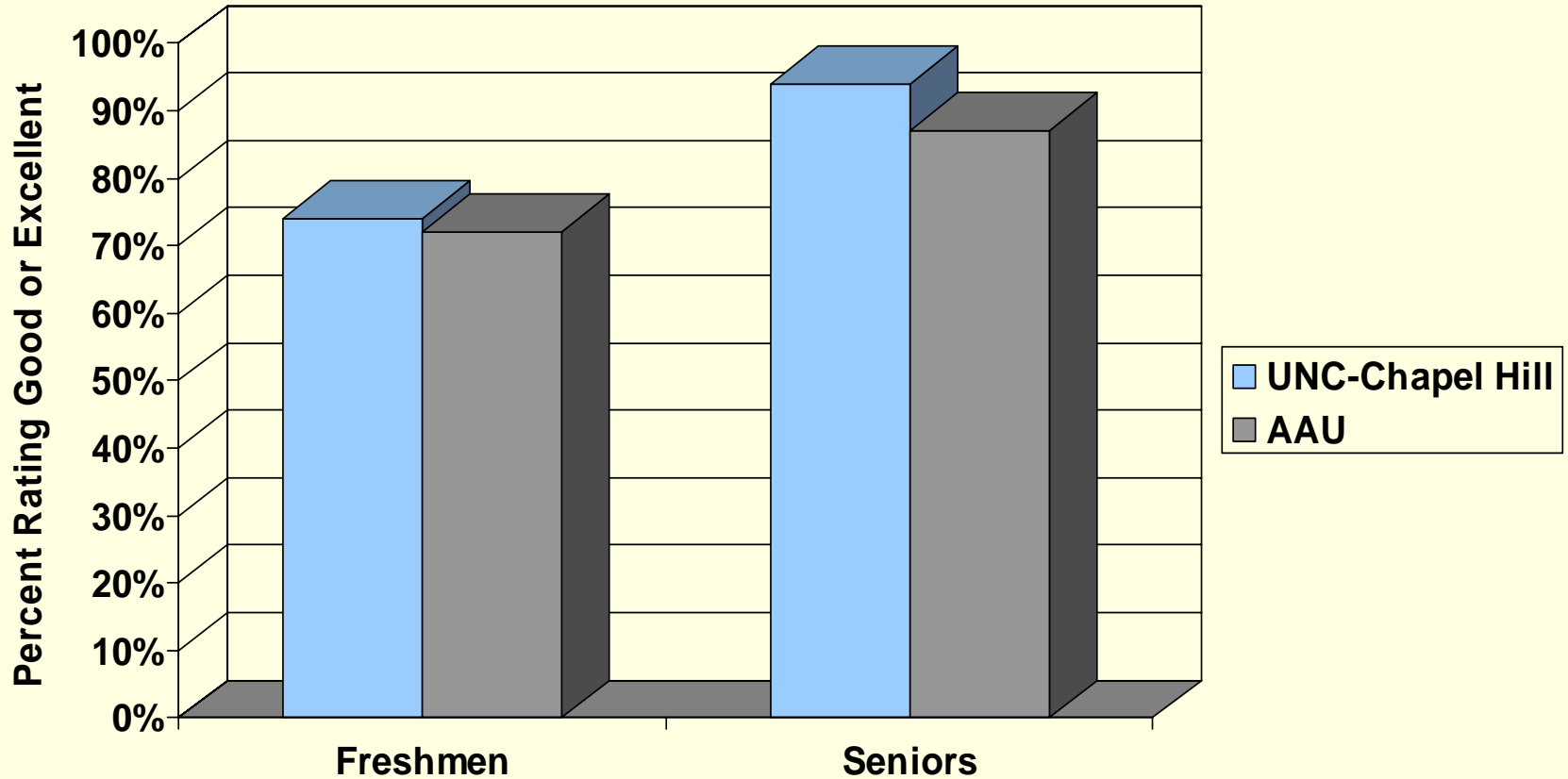
Source: 1999 – 2003 The Center – Lombardi Report December 2004; 2004 data taken from membership directories for each academy which are listed on their respective web sites, <http://www.nationalacademies.org/>. The National Academy Member totals include memberships in the National Academy of Engineering (NAE), the National Academy of Sciences (NAS), and the Institute of Medicine (IOM). The 2004 data for each academy is as of June 14, 2005 (NAE); April 20, 2005 (NAS); and August 1, 2005 (IOM).

# UNC-Chapel Hill Trends in Contracts and Grants Funding Totals

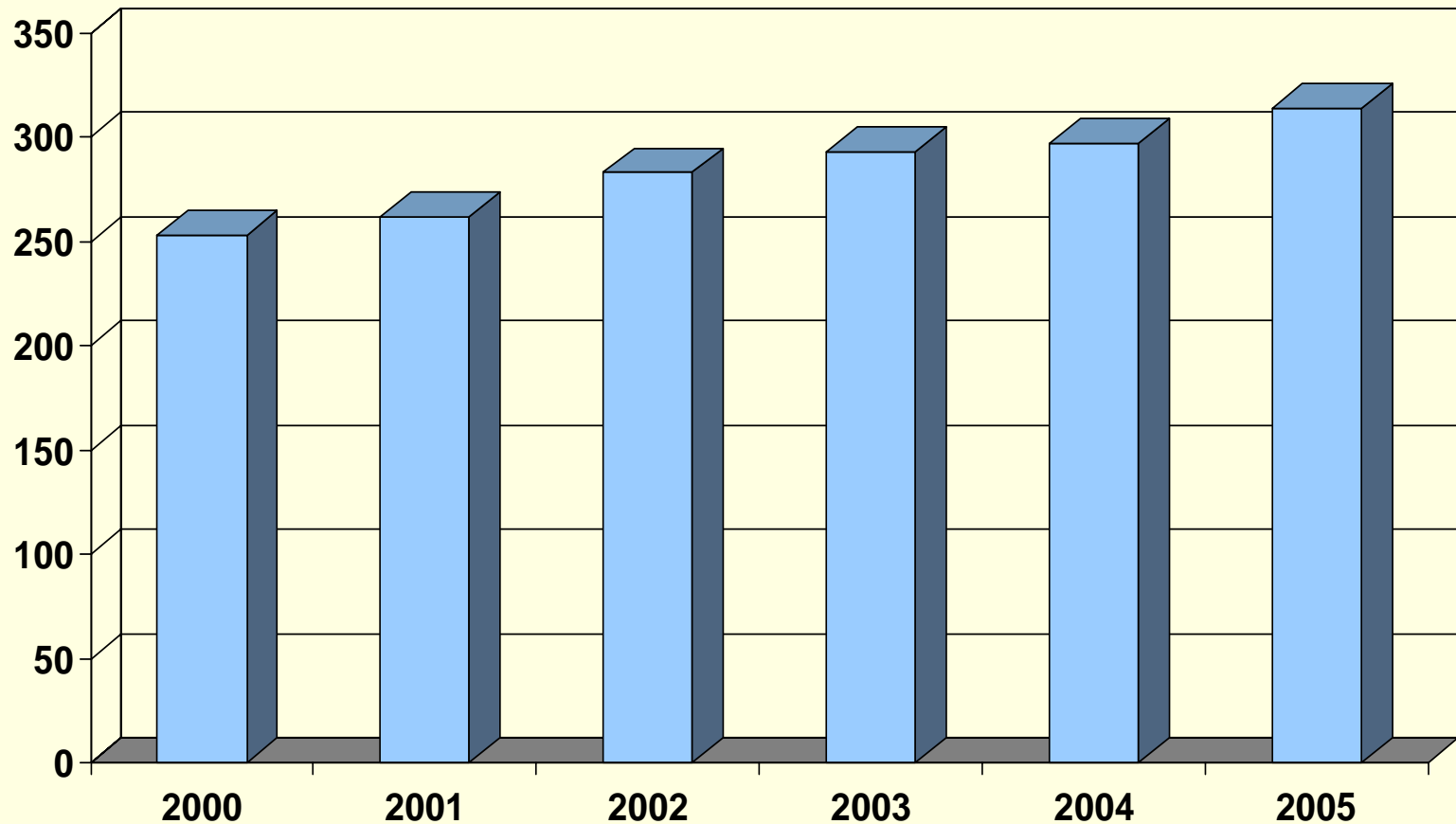


Source: Compiled from the Office of Institutional Research Fact Books; original source is the Office of Research Services, *Annual Reports on Sponsored Program Awards* (1981-2000), as of year ending June 30

# Undergraduate Ratings of Quality of Instruction 2005



# UNC-Chapel Hill Endowed Chairs and Professorships



Source: Office of the Executive Vice Chancellor and Provost  
2004 includes appointments that have been named between January 1, 2004 - May 31, 2004  
2005 as of September 2005

# Average Faculty Salaries Plus Benefits All Ranks 2004-05

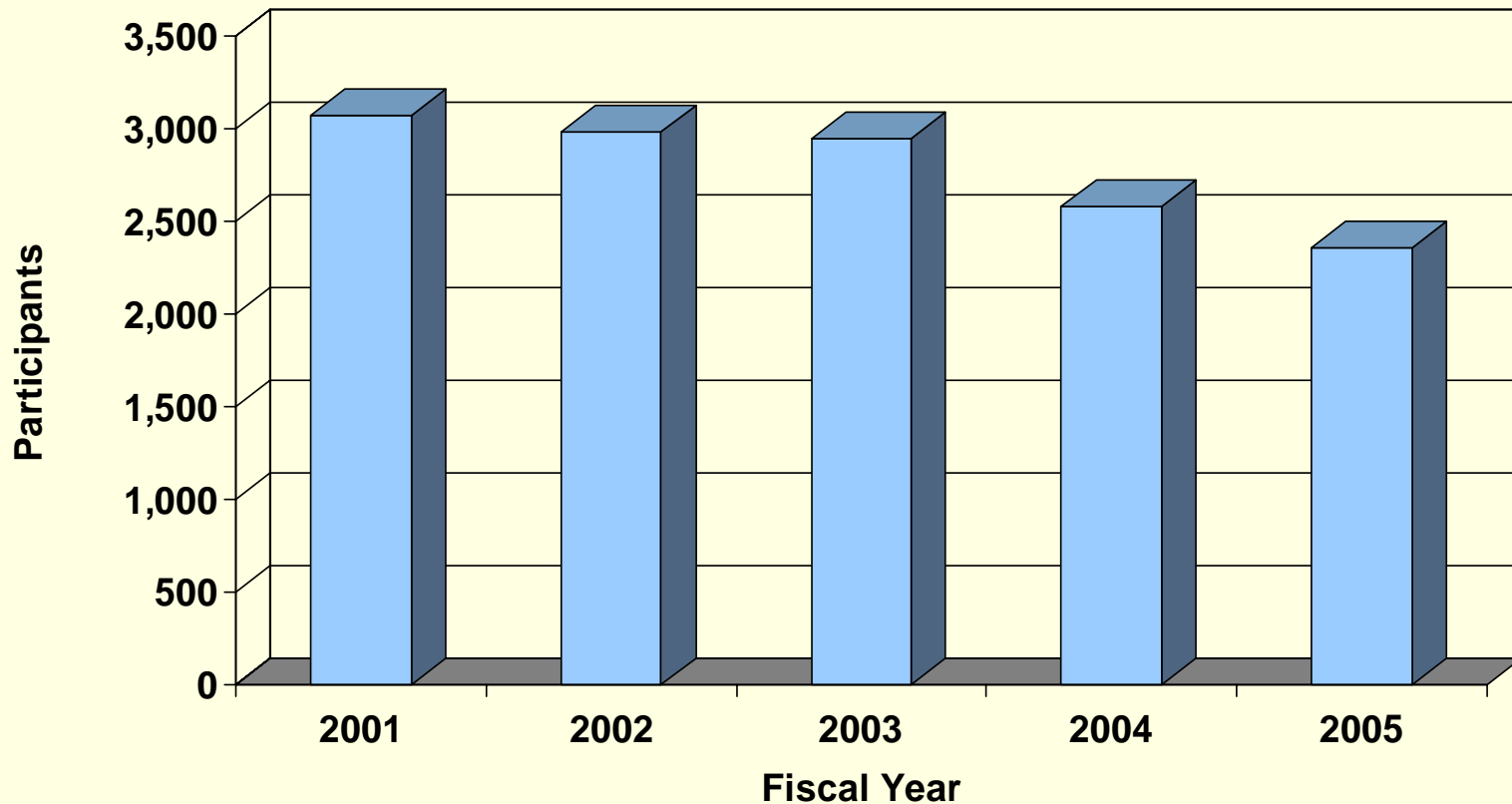
Institution	Avg Salary + Benefits
University of California - Berkeley	\$130,700
University of California - Los Angeles	\$129,400
University of Virginia	\$113,800
University of Illinois - Urbana-Champaign	\$110,100
Ohio State University - Columbus	\$108,500
University of Wisconsin - Madison	\$107,900
University of Michigan - Ann Arbor	\$103,200
University of North Carolina - Chapel Hill	\$102,800
University of Texas - Austin	\$98,500
University of Florida	\$96,800
University of Washington - Seattle	\$96,800

Source: Compiled from AAUP Faculty Salaries, reported in The Chronicle of Higher Education and/or The Chronicle of Higher Education on-line.  
Includes all faculty except those in clinical medicine.



# Staff Development and Resources

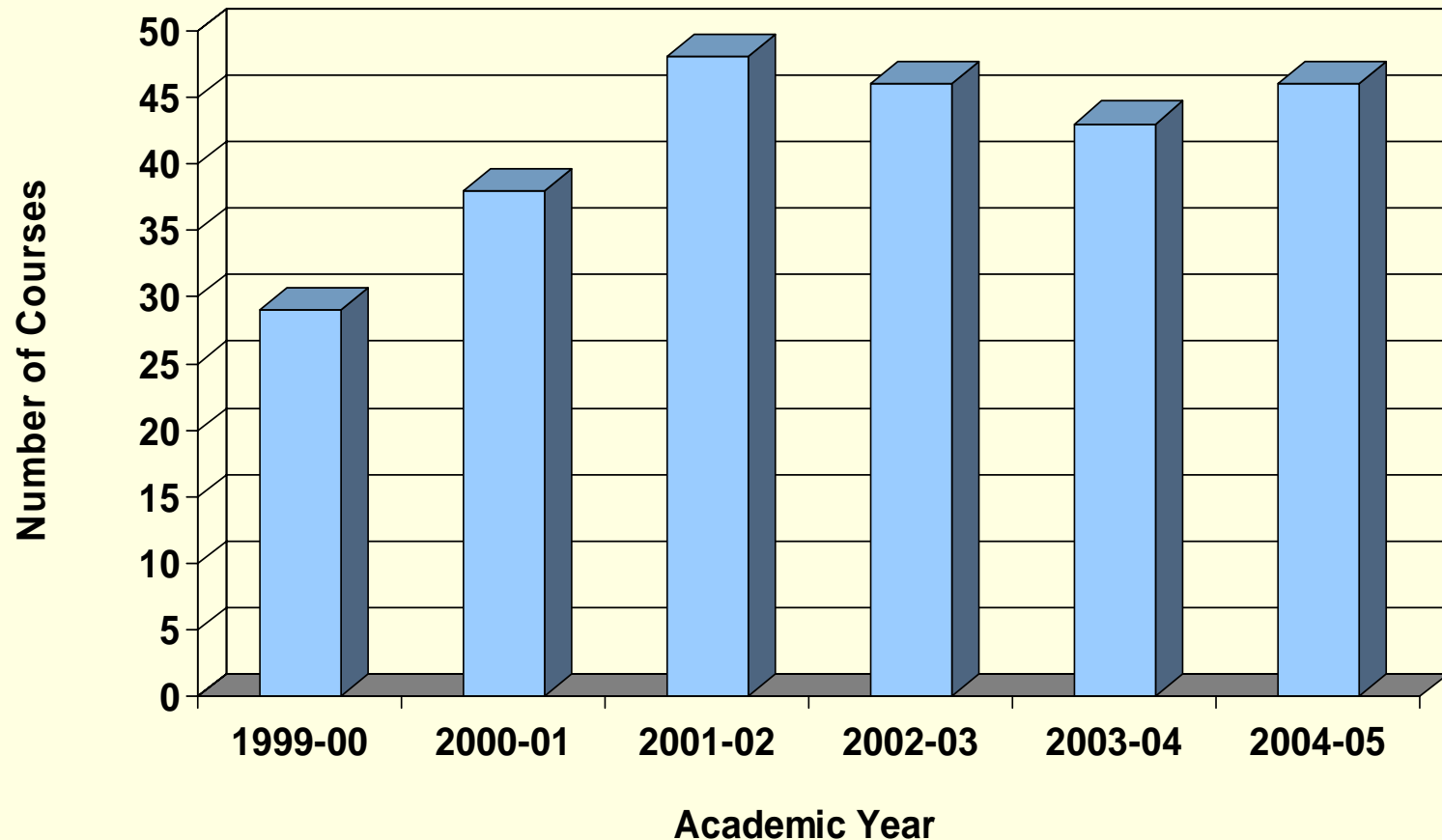
# Staff Participation in Central HR Training at UNC-Chapel Hill





# Public Service and Engagement

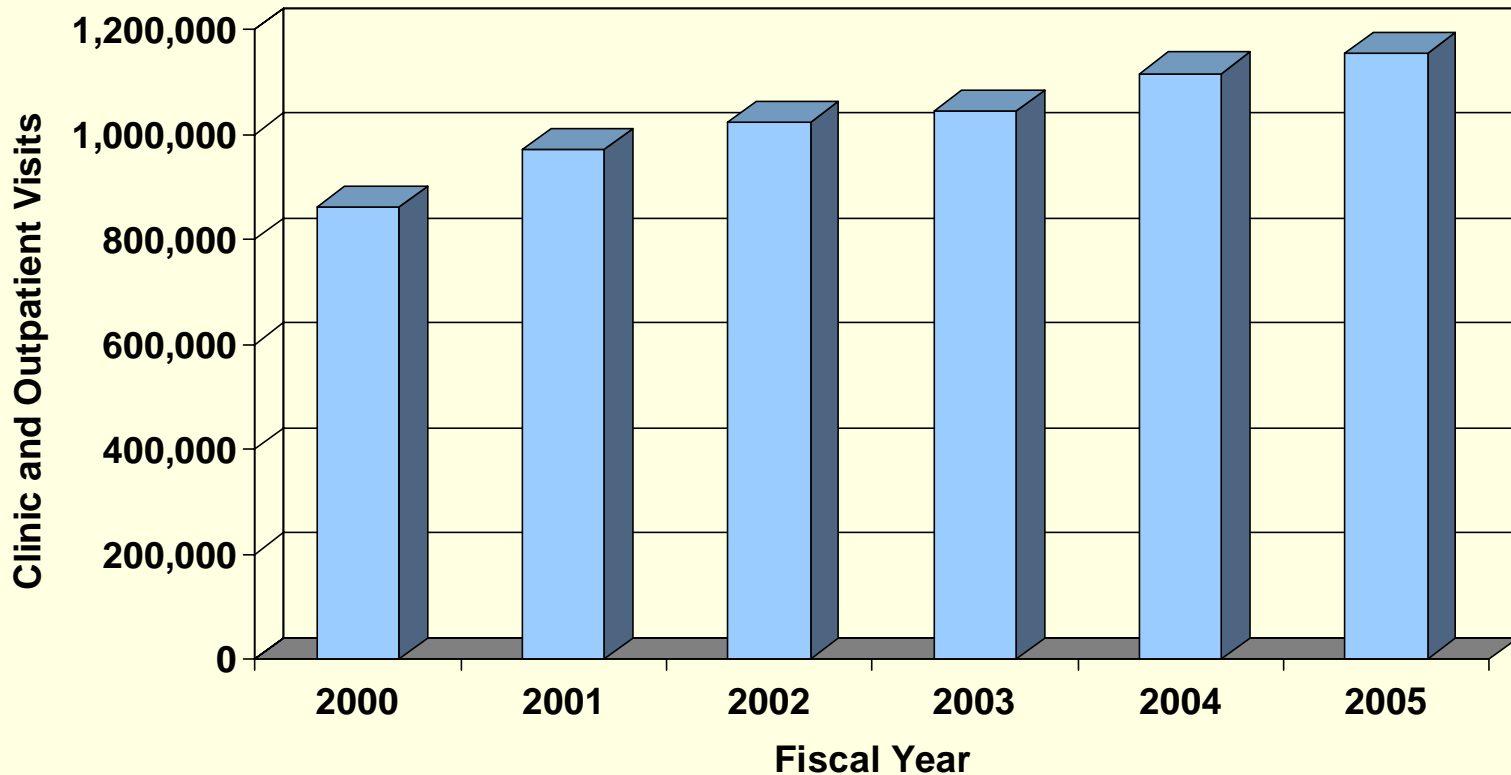
# UNC-Chapel Hill Participation in APPLES Service-Learning Courses



Source: The APPLES Service-Learning Program

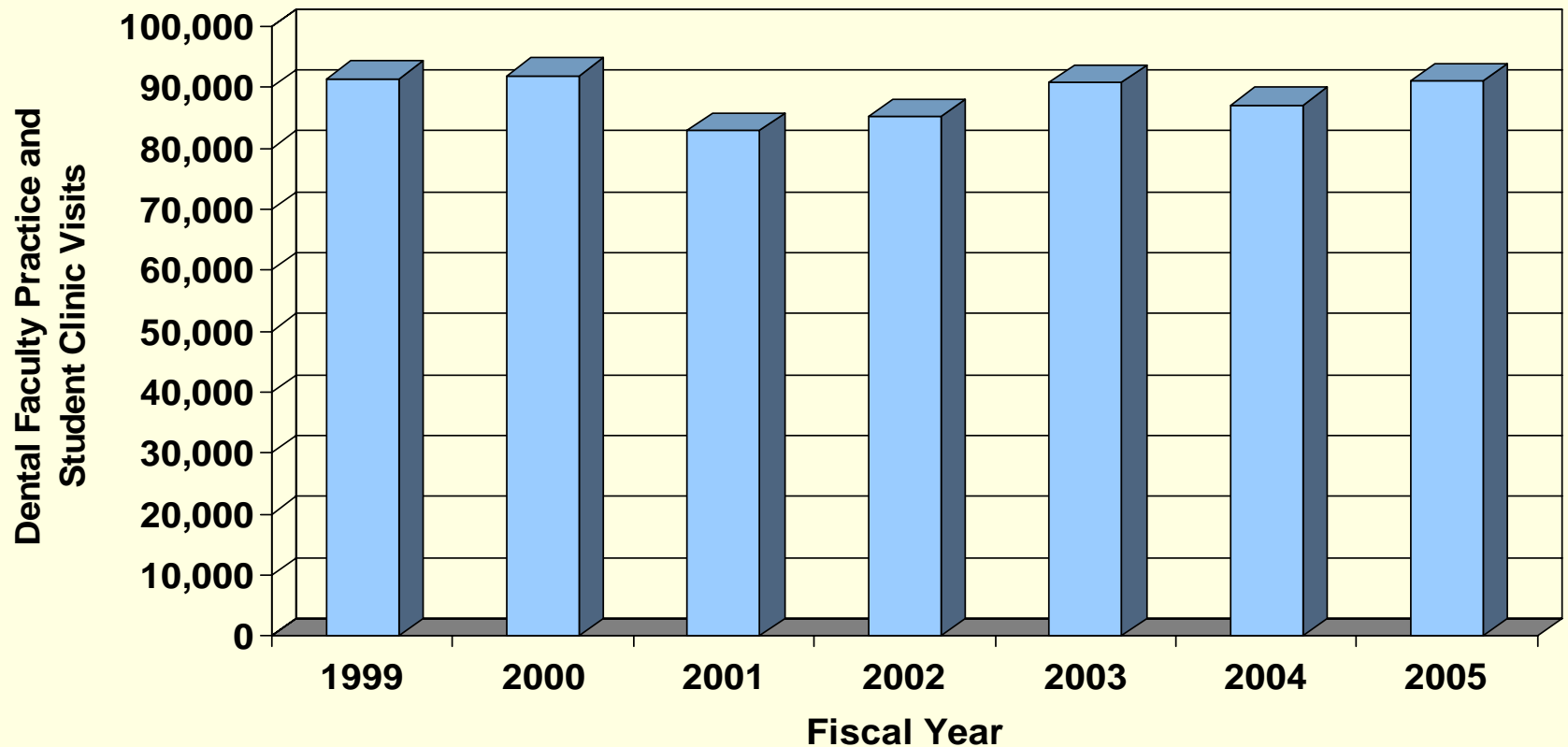
This chart captures the number of service-learning courses offered each academic year. All courses and sections are included.

# UNC-Chapel Hill Total Medical Clinic and Outpatient Visits



Source: UNC Hospitals Financial Statements. Includes Clinic Visits (on and off-campus), Ancillary Outpatient Visits, Emergency Room Visits, and for 2003-2005, Dialysis LLC Visits.

# UNC-Chapel Hill Total Dental Clinics Visits



Source: UNC-Chapel Hill School of Dentistry; FY 1997-2000 from Annual Reports, FY 2001-2003 from Clinic Income Report, FY 2004 and 2005 Clinic Income Reports and Annual Reports. These data represent Student Clinic Visits and Dental Faculty Practice.



# Internationalization

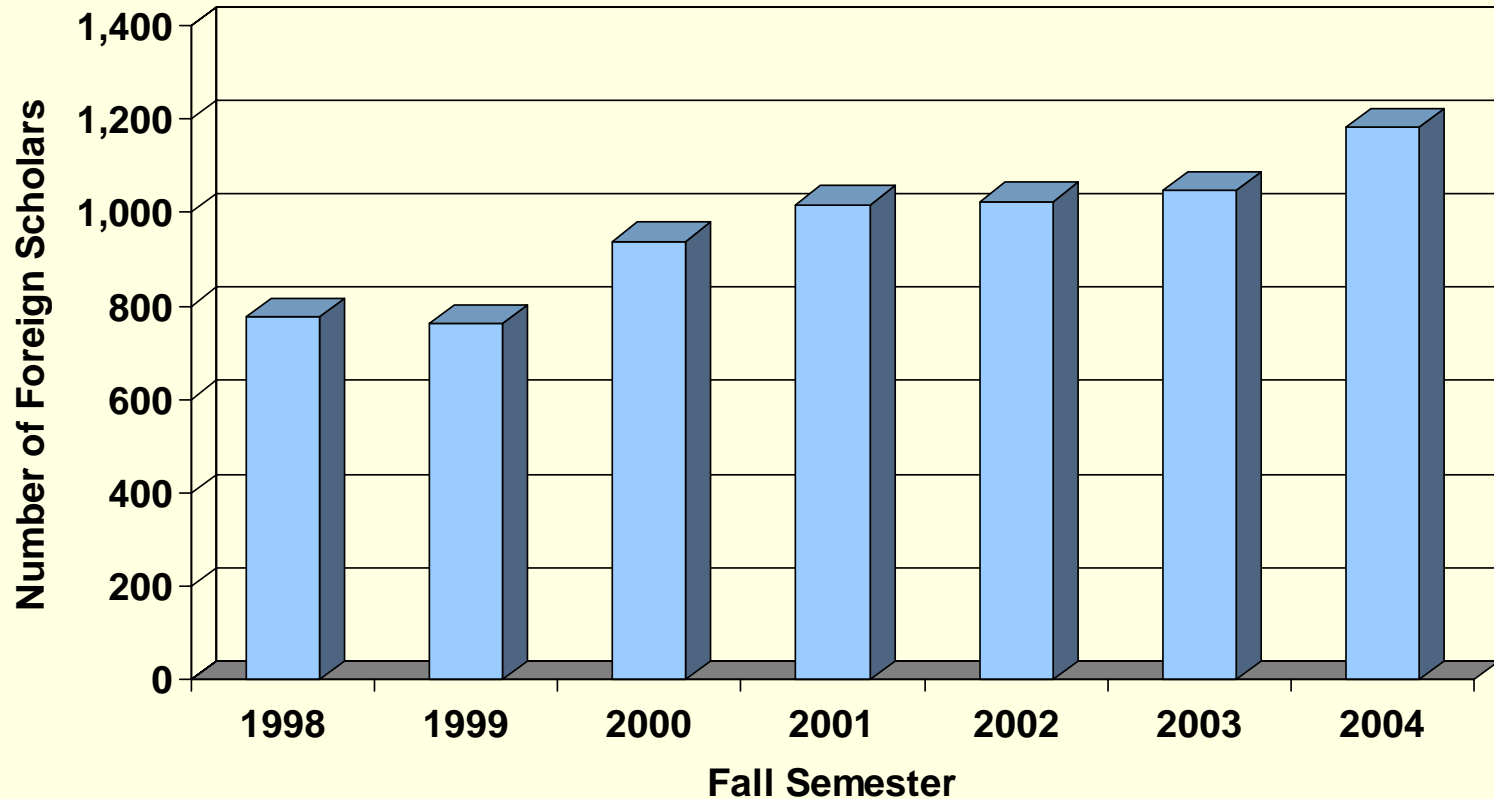
# Student Participation in Study Abroad 2003

Institution	Number	Rate
University of North Carolina - Chapel Hill	1,426	34.6
University of Virginia - Main Campus	1,019	31.7
University of Illinois - Urbana-Champaign	1,377	18.7
University of Wisconsin - Madison	1,441	16.2
University of Michigan - Ann Arbor	1,103	15.5
University of Washington	1,100	15.5
University of Texas - Austin	1,654	15.3
University of Florida	1,357	12.9
Ohio State University - Main Campus	1,227	11.9
University of California - Berkeley	628	10.0
University of California - Los Angeles	1,917	8.9

Source: Open Doors 2004 report, Institute of International Education

The number participating in study abroad represents all students. The participation rate represents undergraduates only.

# UNC-Chapel Hill Total Foreign Scholars

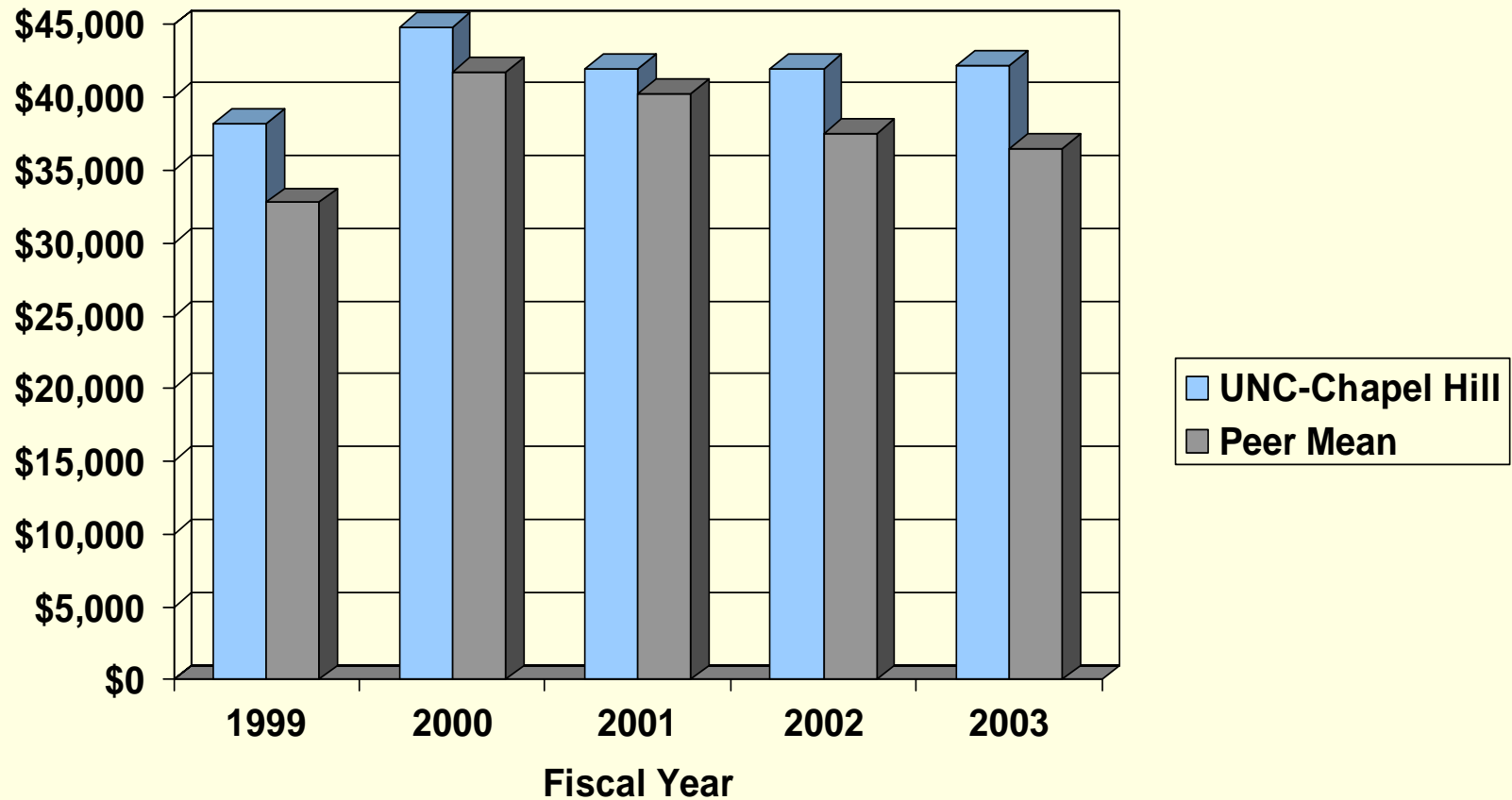


Source: UNC-Chapel Hill Office of International Student and Scholar Services (formerly the International Center), Office of the Associate Provost for International Affairs



# Finance and Facilities

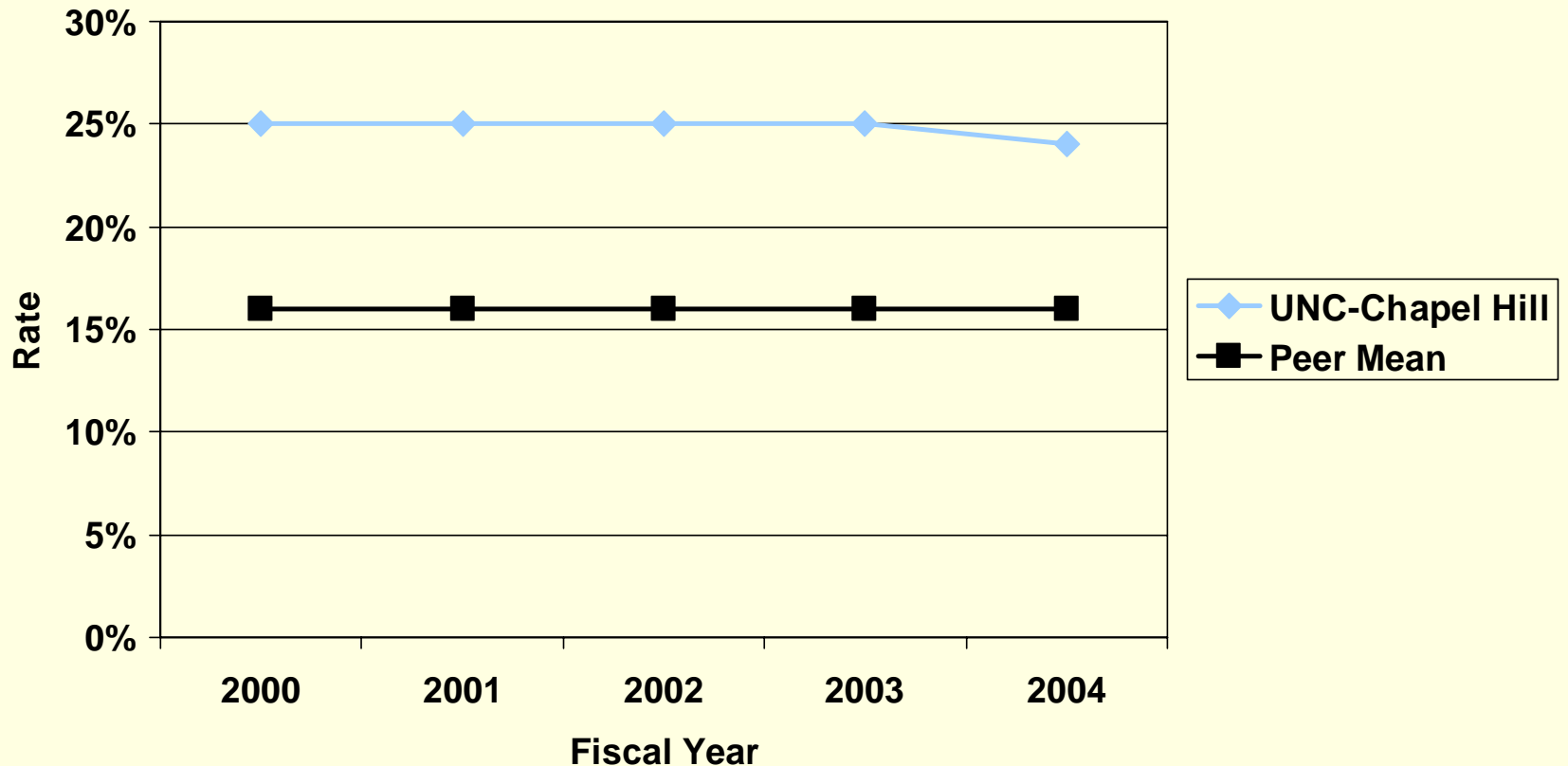
# Endowment per Student Headcount



Source: The Center - Lombardi Report December 2004 (Endowment); IPEDS Peer Analysis System (Fall Headcount Enrollment)

Note: UCLA reported significantly lower endowment assets in 2003 from previous years

# Average Alumni Giving Rate

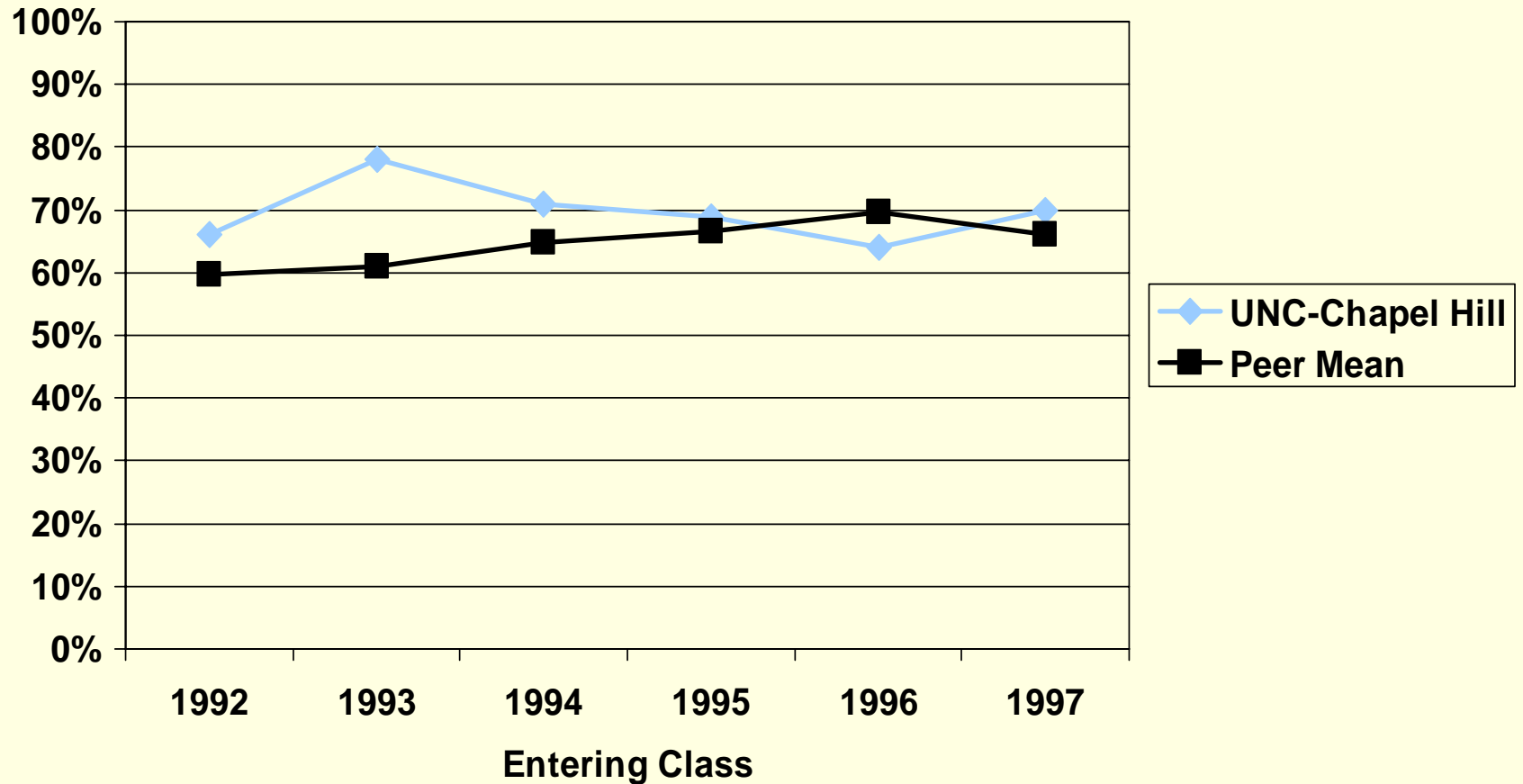


Each data point represents the average percentage of alumni who gave to their school during two fiscal years.  
Source: U.S. News & World Report America's Best Colleges Editions 2002-2006

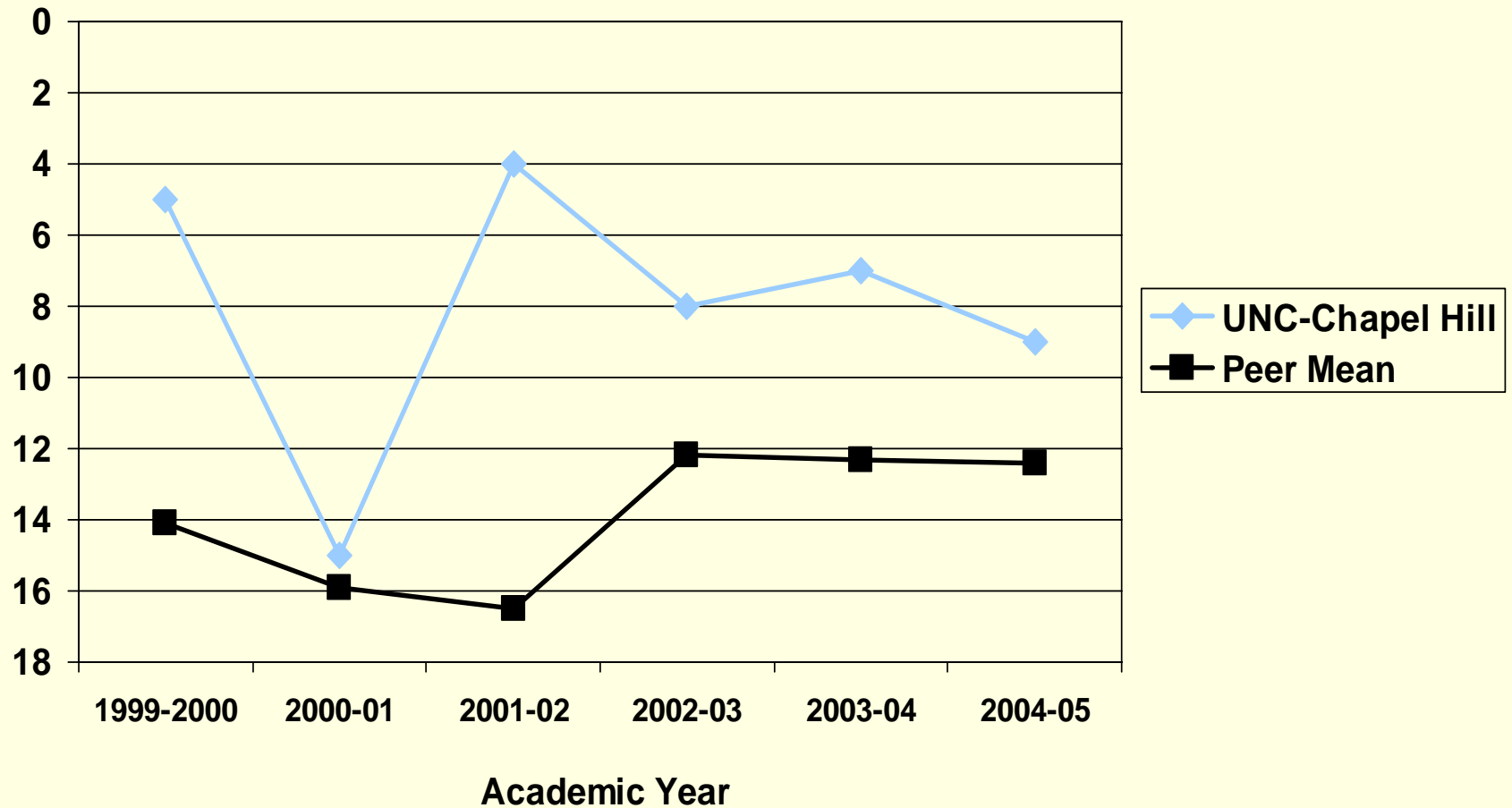


**Athletics**

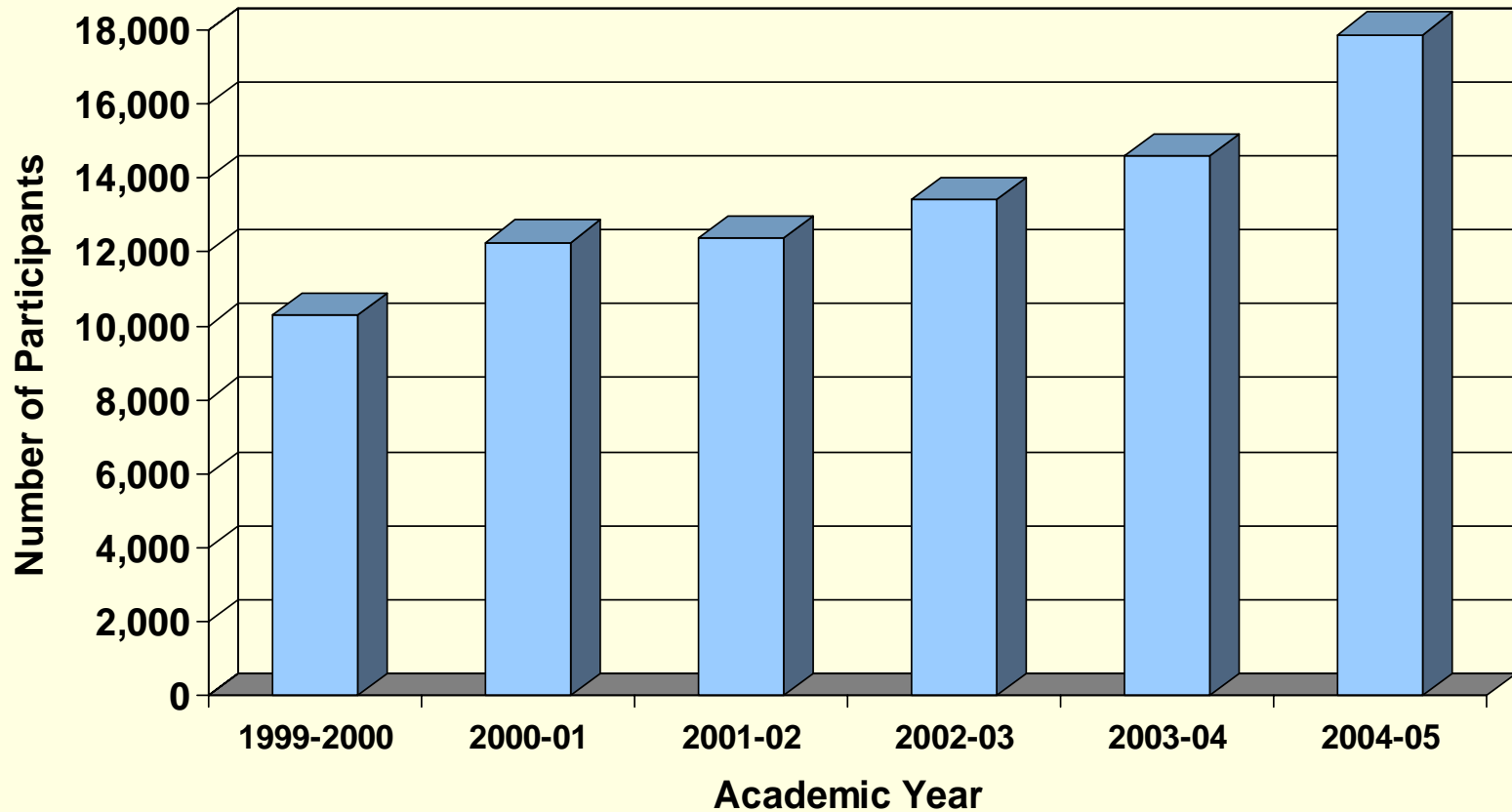
# Six-Year NCAA Graduation Rates for Freshman Student Athletes



# United States Sports Academy Directors' Cup Final Rankings



# UNC-Chapel Hill Intramural and Sport Club Participation





# Closing Questions and Comments

