

# Evaluating Family to Family

---

School of Social Work  
The University of North Carolina at Chapel Hill

May 2007



# Stages of the Evaluation

---

- 2005: Self-Assessment
- 2006: Implementation Analysis
- 2007: Enhanced TA to anchor sites; analysis of baseline outcomes; process evaluation monitoring efforts implemented
- 2008: Ongoing process and outcome analysis; possible focus groups and/or surveys of participants—staff, resource families, birth families
- 2009: Process and outcome analyses for final report



# Implementation Analysis

---

- ❑ Effort to understand the challenges of implementing F2F and how relatively successful sites have responded to that challenge
- ❑ Specific focus on systemic implementation issues that had to be addressed before work on core strategies could proceed— explores any fundamental systemic conflict with F2F values and principles
- ❑ Cross-site lessons rather than site-specific assessments
- ❑ Objectives of report: (1) inform “enhanced TA;” (2) share lessons with less mature sites; and (3) determine when it would be feasible to conduct an outcome evaluation



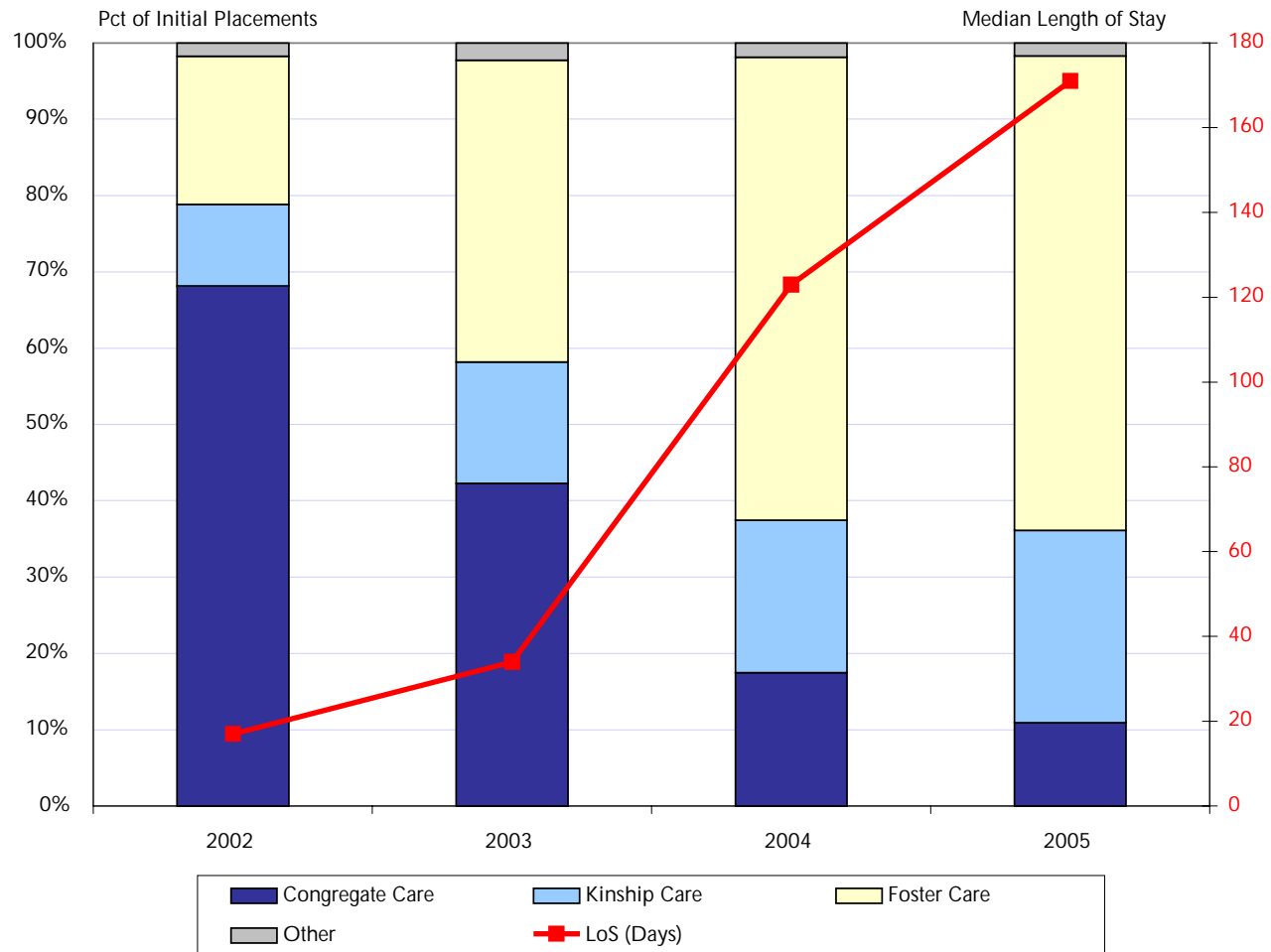
# Findings

---

- ❑ Validation of the real accomplishment represented by overcoming systemic challenges to pave the way for effective implementation of core strategies



# Example from Denver



# Findings

---

- ❑ Strong and consistent leadership from the local child welfare director is a crucial element of success, but some sites were able to move ahead in spite of changes in leadership
- ❑ Persistence was ultimately reinforcing in that seeing the actual benefits of the strategy work helped break down resistance and encourage broader commitment among agency staff and community partners



# Findings

---

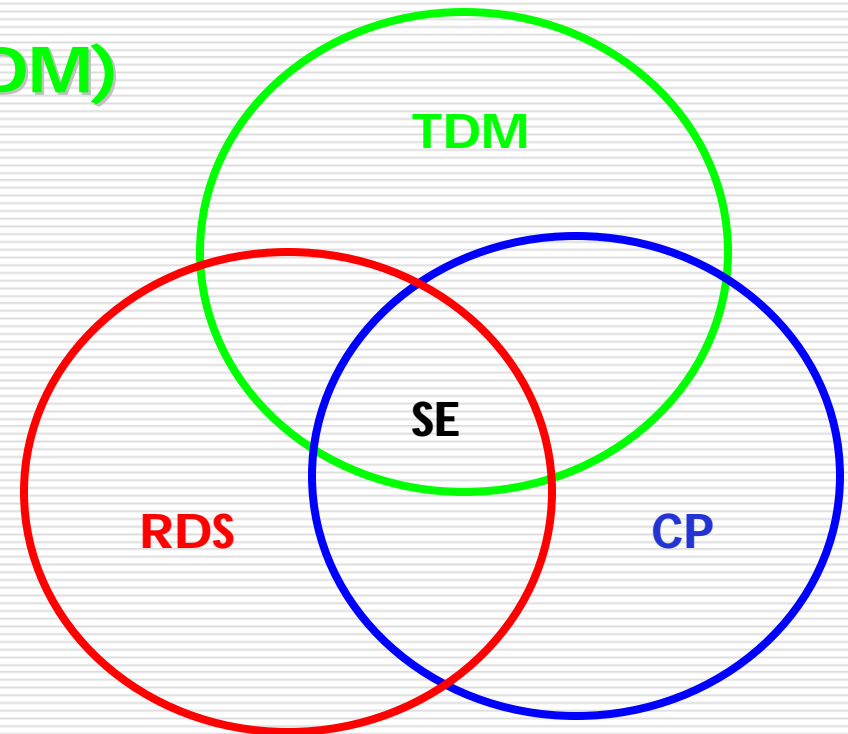
- ❑ Broader and deeper support among frontline supervisors and staff is challenging given turnover and departure from past practice
- ❑ Relationship with the courts needs continuing attention
- ❑ Taking F2F to the next level requires focus on building linkages across strategies



# Family to Family: Integration of Core Strategies

---

- **Team Decision-Making (TDM)**
- **Building Community Partnerships (CP)**
- **Recruiting and Supporting Resource Families (RDS)**
- **Self-Evaluation (SE)**



Animation developed by Tom Crea; for more information, visit <http://www.aecf.org/initiatives/familytofamily/>



# Process Evaluation

---

- ❑ Process monitoring mechanisms needed in 2007
- ❑ TDM monitoring system is well-established in most sites, but monitoring mechanisms in RDS and BCP must be put into place with targeted help
- ❑ Growing investment of human and other resources in self-evaluation
  - Internal: CFSR / PIP and CQI processes
  - University-based database and analytic support
  - Subscriptions to the State Data Center at Chapin Hall



# Data to Support the Evaluation

---

- Anchor sites agree to provide the evaluation team case-level data for independent analysis of outcomes and implementation of core strategies
- In addition to providing data, anchor sites will provide periodic reports on changes in outcomes and progress in implementing core strategies to demonstrate capacity for self-evaluation—spelled out in addendum to Foundation’s letter of agreement with anchor sites



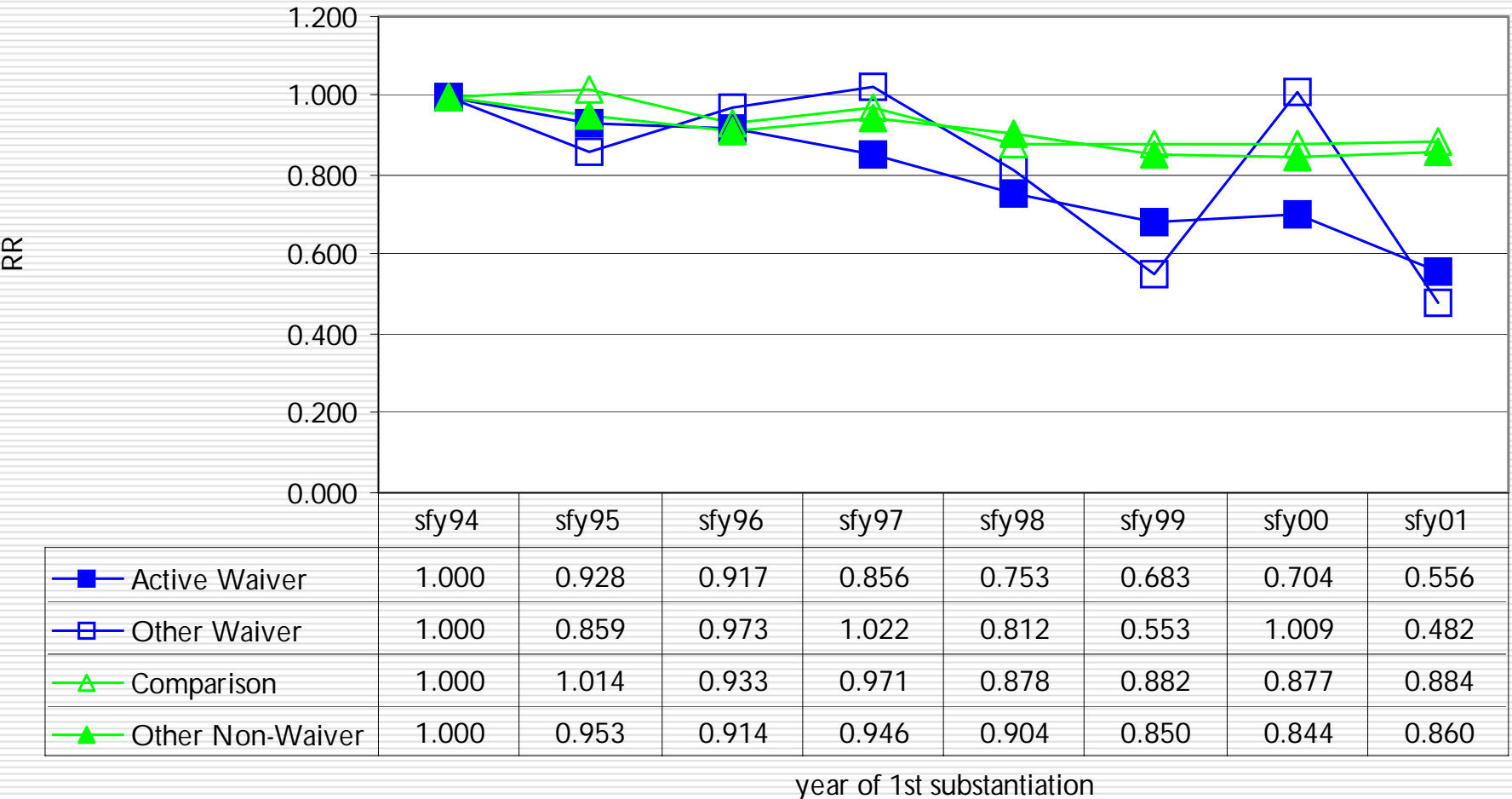
# Outcome Evaluation Approach

---

- The basic framework for the analysis is a comparison of successive cohorts within sites in terms of changes in specifically defined outcomes that are used by site self-evaluation teams as well as the F2F evaluation team



# Illustration of Successive Cohorts Analytic Framework



# EBP and the F2F Evaluation

---

- The designation of evidence-based practices occurs within formal processes established by specific bodies such as the Campbell Collaboration and APHSA, all of which emphasize experimental or quasi-experimental testing of narrowly defined interventions or intervention components
- This contrasts with the F2F “saturation” approach that seeks to transform systems to create a policy and program *context* that is conducive to the adoption of a *bundle* of practices that seeks to improve outcomes for families and children



# Information Available Online

---

## □ **Implementation Analysis:**

<http://www.unc.edu/~lynnu/ImpleF2F.pdf>

## □ **Evaluation Plan:**

<http://www.unc.edu/~lynnu/f2fevalplan.pdf>

