

- Thanks to Mike Aguilar.

<Invoking Matlab on Emerald>

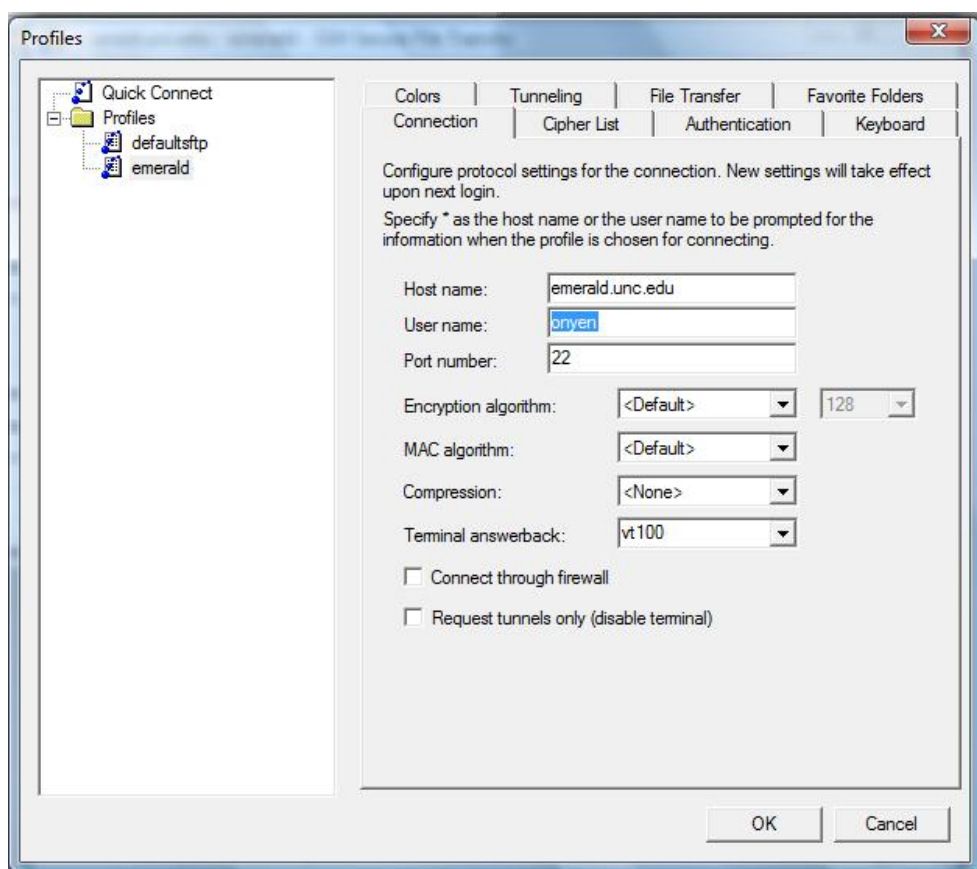
Note: Commands are surrounded by [] and should not be typed at the shell prompt.

Shell:

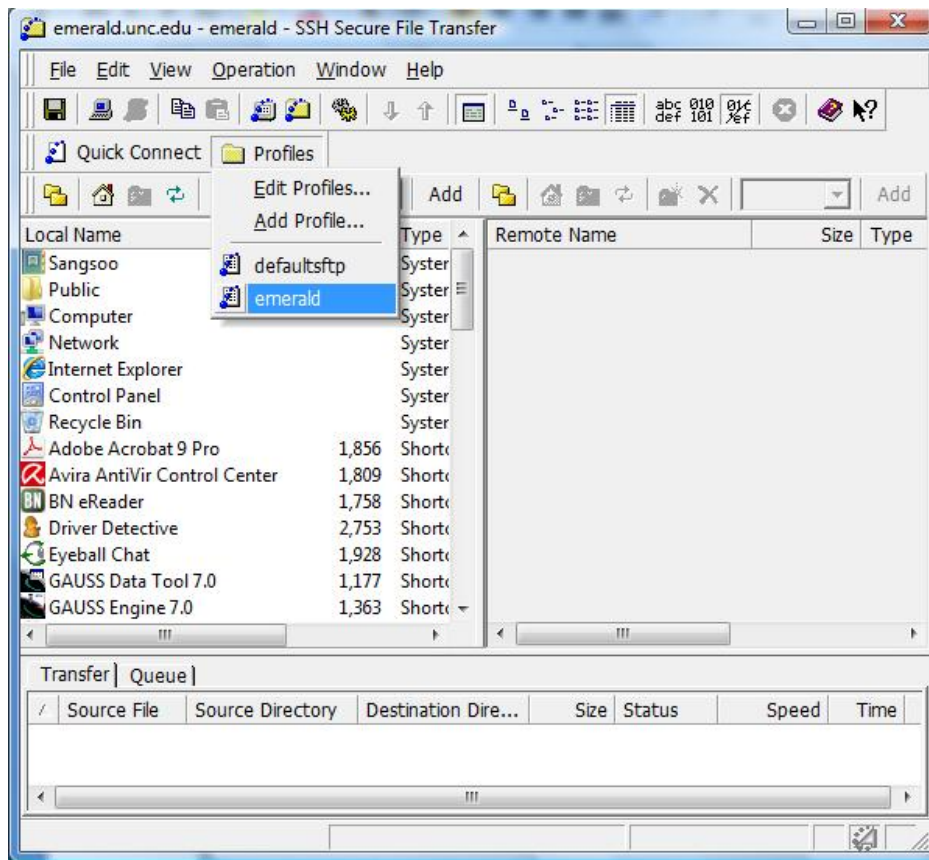
Secure shell can be obtained via <https://shareware.unc.edu/shftware.html>

SSH setup:

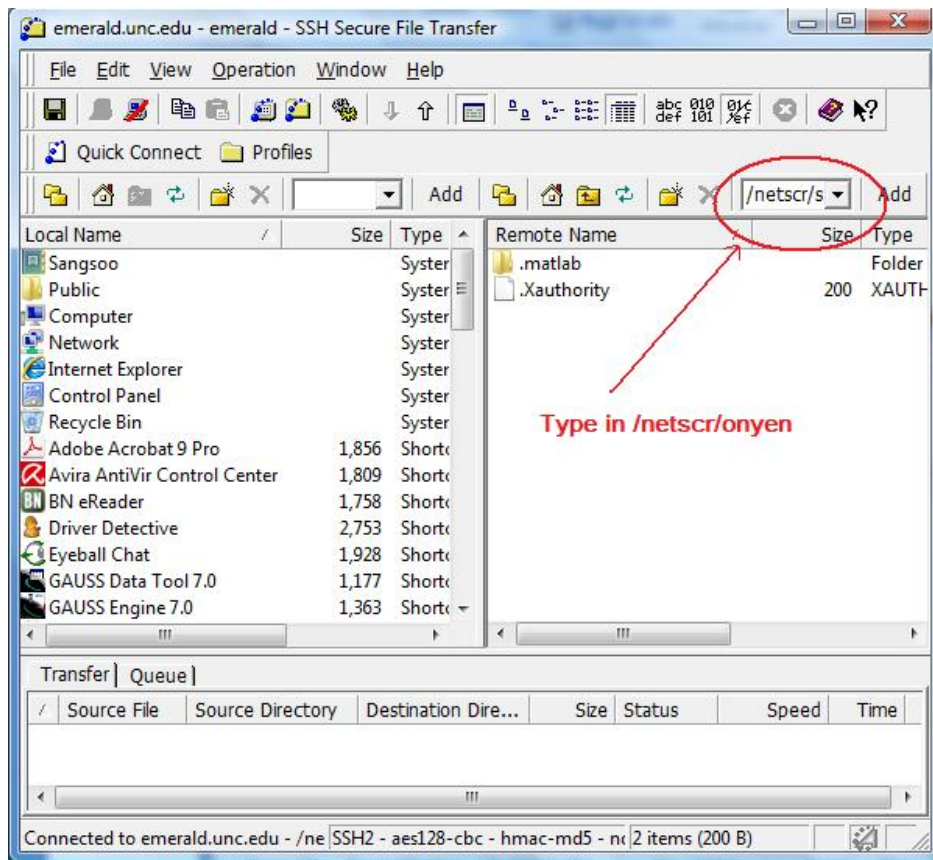
Install SSH client and [Add profile]. I used emerald for the name of profile.



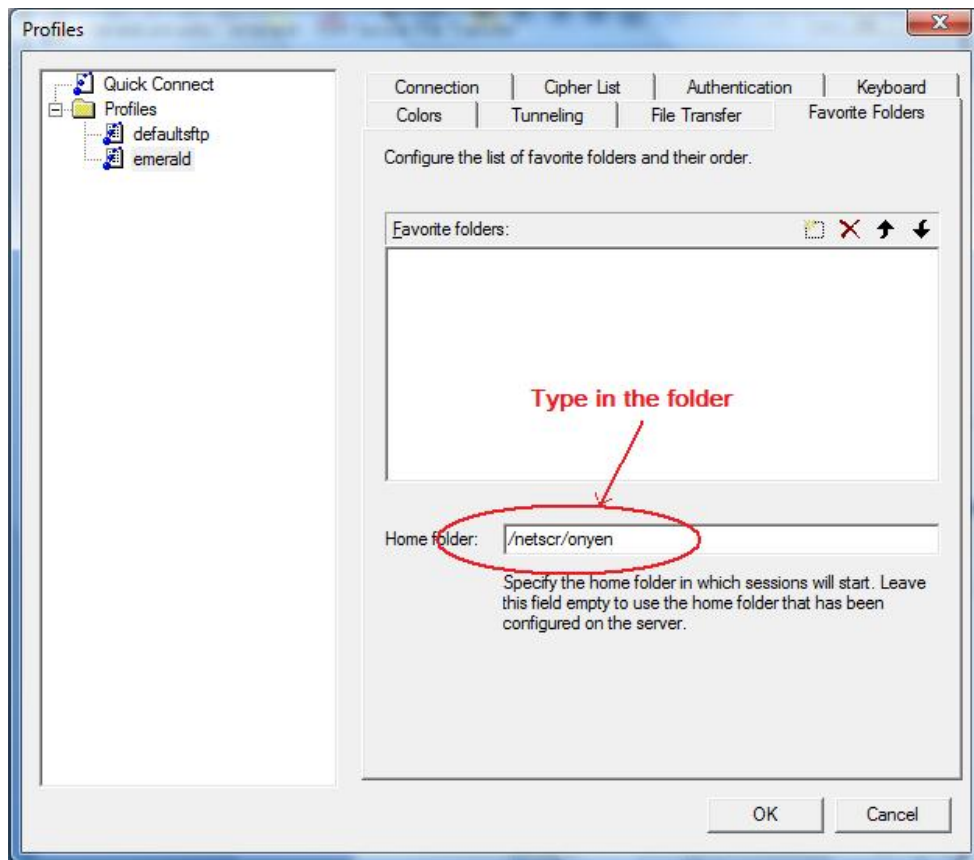
Connect to Emerald.



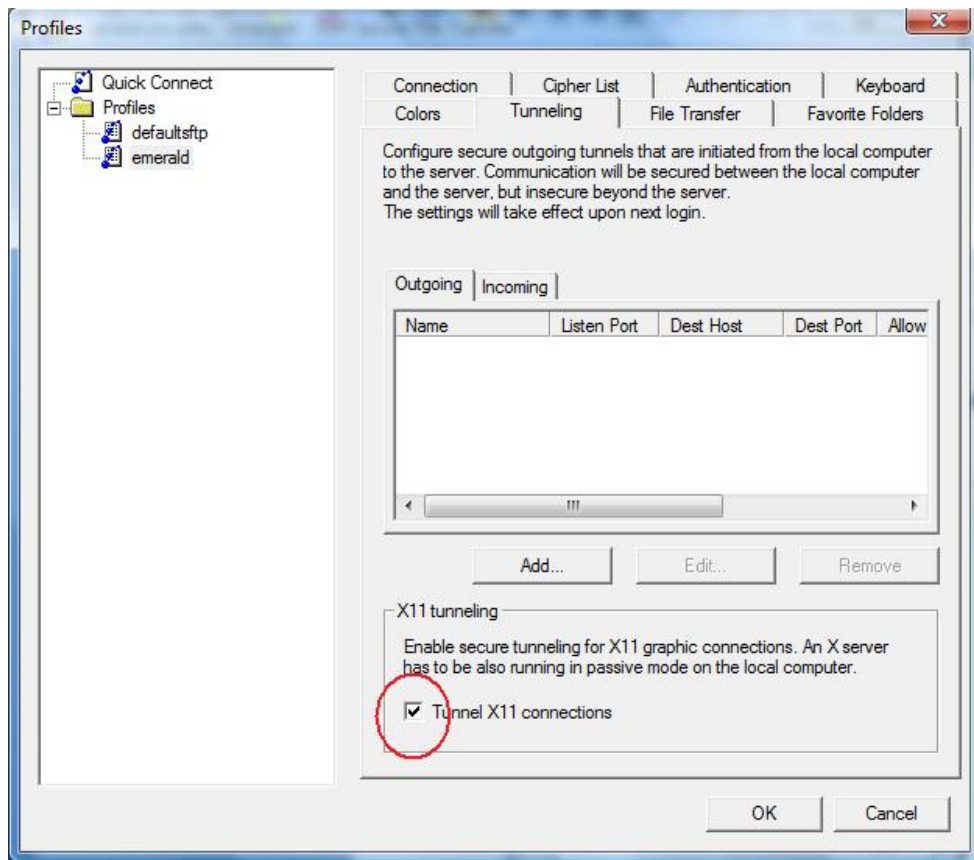
To change the directory to /netscr/onyen...



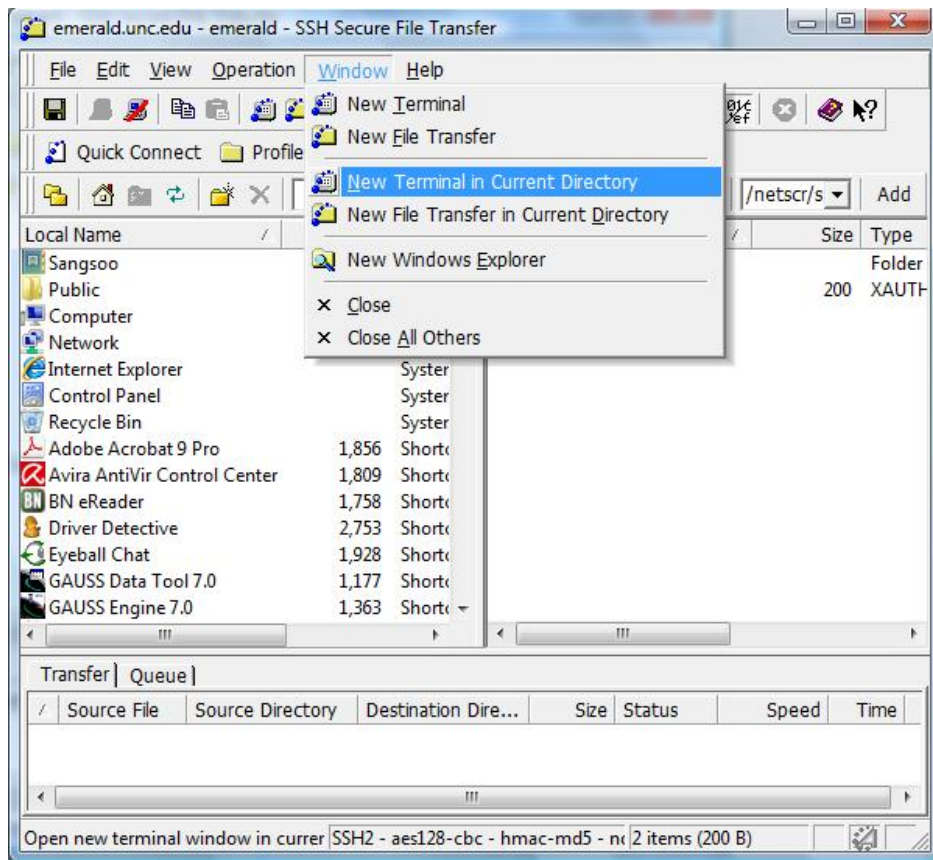
To start at a certain directory ...



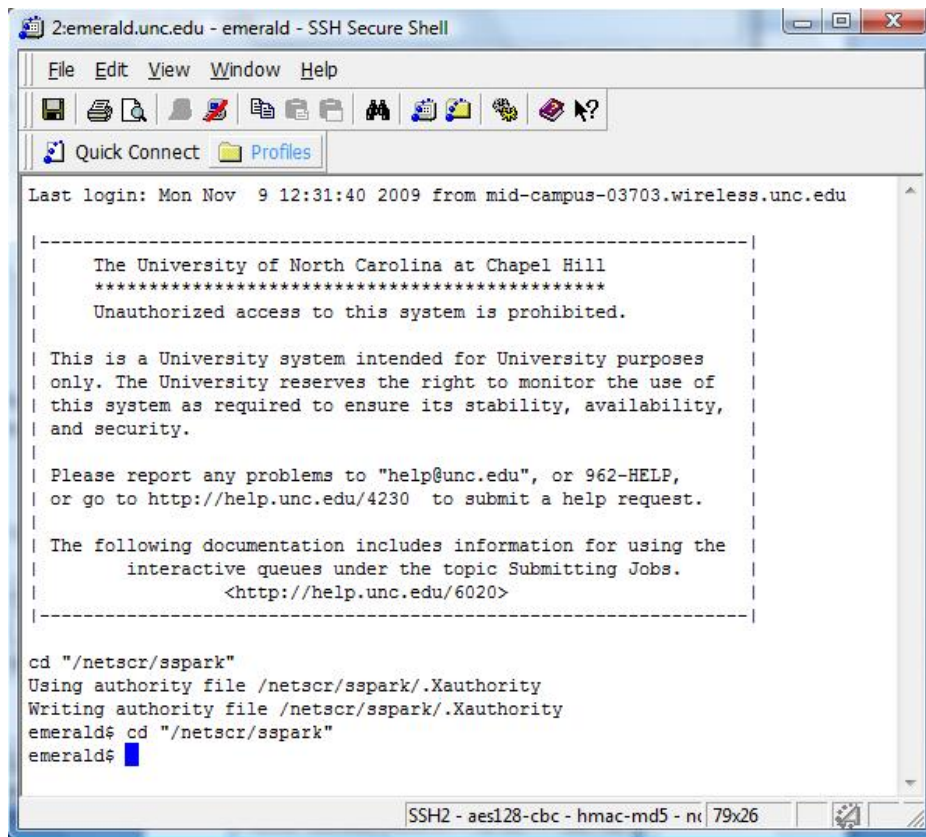
In case you want to use x-win later ...



Invoke the terminal.



Terminal window.



```
2:emerald.unc.edu - emerald - SSH Secure Shell
File Edit View Window Help
Quick Connect Profiles
Last login: Mon Nov  9 12:31:40 2009 from mid-campus-03703.wireless.unc.edu

-----
The University of North Carolina at Chapel Hill
*****
Unauthorized access to this system is prohibited.

This is a University system intended for University purposes
only. The University reserves the right to monitor the use of
this system as required to ensure its stability, availability,
and security.

Please report any problems to "help@unc.edu", or 962-HELP,
or go to http://help.unc.edu/4230 to submit a help request.

The following documentation includes information for using the
interactive queues under the topic Submitting Jobs.
<http://help.unc.edu/6020>
-----

cd "/netscr/sspark"
Using authority file /netscr/sspark/.Xauthority
Writing authority file /netscr/sspark/.Xauthority
emerald$ cd "/netscr/sspark"
emerald$
```

Everything below is to be done in the terminal window.

Adding matlab to user environment:

lpm add matlab

Workspace:

Use the netscr directory for running jobs.

From root directory change to netscr via [cd/ netscr/onyen].

To see what there are, [ls].

For other commands, google 'unix reference'.

Adding paths: Suppose to have created netscr/onyen/mfiledir

Enter `[addpath(genpath('/netscr/onyen/mfiledir/'))];` to your m-file.

Running jobs in Interactive mode:

Enter `[imatlab]` without brackets at the shell prompt.

Running jobs in Batch mode:

- 1) Enter `[bmatlab Filename.m]`
- 2) Enter `[bsub -q batch -l Filename.m -o outputfile.out -S20000 matlab -nodisplay -nojvmhil]`
Note: This defaults to (week) queue. Can replace (batch) with (idel), (int), (now), etc.

Saving work:

`save '/netscr/onyen/outputfile.out'`